

IREB2 Antibody (Center)
Affinity Purified Rabbit Polyclonal Antibody (Pab)
Catalog # AP12657C**Specification**

IREB2 Antibody (Center) - Product Information

Application	WB, IHC-P, FC,E
Primary Accession	P48200
Other Accession	Q62751 , B3VKQ2 , Q811J3 , NP_004127.1
Reactivity	Human
Predicted	Mouse, Pig, Rat
Host	Rabbit
Clonality	Polyclonal
Isotype	Rabbit IgG
Calculated MW	105059
Antigen Region	201-230

IREB2 Antibody (Center) - Additional Information**Gene ID** 3658**Other Names**

Iron-responsive element-binding protein 2, IRE-BP 2, Iron regulatory protein 2, IRP2, IREB2

Target/Specificity

This IREB2 antibody is generated from rabbits immunized with a KLH conjugated synthetic peptide between 201-230 amino acids from the Central region of human IREB2.

Dilution

WB~~1:1000
IHC-P~~1:10~50
FC~~1:10~50

Format

Purified polyclonal antibody supplied in PBS with 0.09% (W/V) sodium azide. This antibody is purified through a protein A column, followed by peptide affinity purification.

Storage

Maintain refrigerated at 2-8°C for up to 2 weeks. For long term storage store at -20°C in small aliquots to prevent freeze-thaw cycles.

Precautions

IREB2 Antibody (Center) is for research use only and not for use in diagnostic or therapeutic procedures.

IREB2 Antibody (Center) - Protein Information**Name** IREB2

Function RNA-binding protein that binds to iron-responsive elements (IRES), which are stem-loop structures found in the 5'-UTR of ferritin, and delta aminolevulinic acid synthase mRNAs, and in the 3'-UTR of transferrin receptor mRNA. Binding to the IRE element in ferritin results in the repression of its mRNA translation. Binding of the protein to the transferrin receptor mRNA inhibits the degradation of this otherwise rapidly degraded mRNA.

Cellular Location

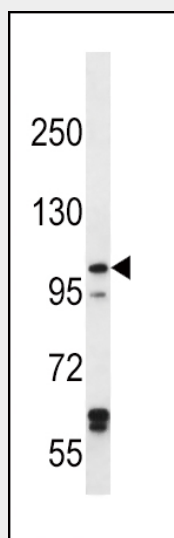
Cytoplasm.

IREB2 Antibody (Center) - Protocols

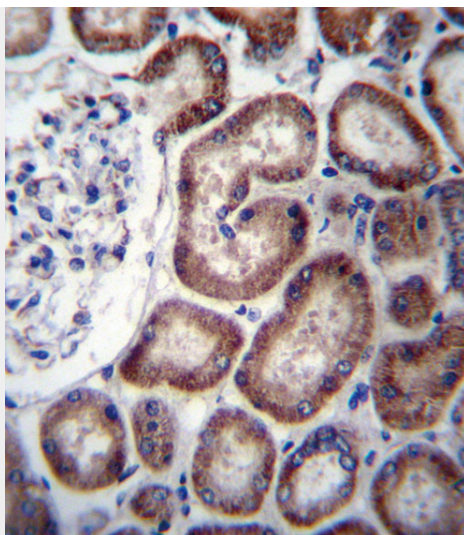
Provided below are standard protocols that you may find useful for product applications.

- [Western Blot](#)
- [Blocking Peptides](#)
- [Dot Blot](#)
- [Immunohistochemistry](#)
- [Immunofluorescence](#)
- [Immunoprecipitation](#)
- [Flow Cytometry](#)
- [Cell Culture](#)

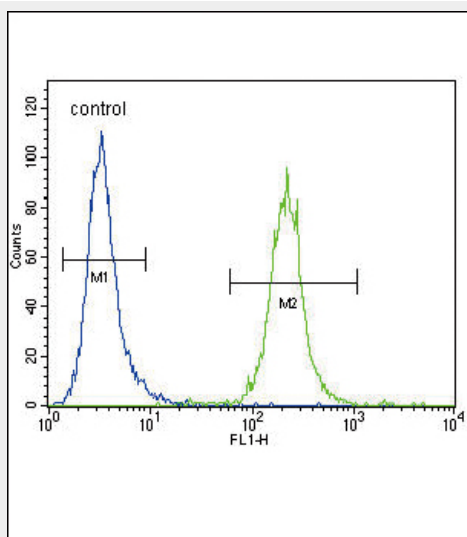
IREB2 Antibody (Center) - Images



IREB2 Antibody (Center) (Cat. #AP12657c) western blot analysis in HeLa cell line lysates (35ug/lane). This demonstrates the IREB2 antibody detected the IREB2 protein (arrow).



IREB2 Antibody (Center) (Cat. #AP12657c) immunohistochemistry analysis in formalin fixed and paraffin embedded human kidney tissue followed by peroxidase conjugation of the secondary antibody and DAB staining. This data demonstrates the use of IREB2 Antibody (Center) for immunohistochemistry. Clinical relevance has not been evaluated.



IREB2 Antibody (Center) (Cat. #AP12657c) flow cytometric analysis of HeLa cells (right histogram) compared to a negative control cell (left histogram). FITC-conjugated goat-anti-rabbit secondary antibodies were used for the analysis.

IREB2 Antibody (Center) - Background

IREB2 is a RNA-binding protein that binds to iron-responsive elements (IRE), which are stem-loop structures found in the 5'-UTR of ferritin, and delta aminolevulinic acid synthase mRNAs, and in the 3'-UTR of transferrin receptor mRNA. Binding to the IRE element in ferritin results in the repression of its mRNA translation. Binding of the protein to the transferrin receptor mRNA inhibits the degradation of this otherwise rapidly degraded mRNA.

IREB2 Antibody (Center) - References

Ucisik-Akkaya, E., et al. Mol. Hum. Reprod. 16(10):770-777(2010)
Hansen, H.M., et al. Hum. Mol. Genet. 19(18):3652-3661(2010)
Cho, M.H., et al. Nat. Genet. 42(3):200-202(2010)

Salahudeen, A.A., et al. Science 326(5953):722-726(2009)
DeMeo, D.L., et al. Am. J. Hum. Genet. 85(4):493-502(2009)