

**APBA2 Antibody (Center)**  
**Affinity Purified Rabbit Polyclonal Antibody (Pab)**  
**Catalog # AP12659c**

**Specification**

---

**APBA2 Antibody (Center) - Product Information**

Application	WB,E
Primary Accession	<a href="#">O99767</a>
Other Accession	<a href="#">O35431</a> , <a href="#">P98084</a> , <a href="#">NP_005494.2</a> , <a href="#">NP_001123886.1</a>
Reactivity	Mouse
Predicted	Rat
Host	Rabbit
Clonality	Polyclonal
Isotype	Rabbit IgG
Calculated MW	82512
Antigen Region	307-336

**APBA2 Antibody (Center) - Additional Information**

**Gene ID** 321

**Other Names**

Amyloid beta A4 precursor protein-binding family A member 2, Adapter protein X11beta, Neuron-specific X11L protein, Neuronal Munc18-1-interacting protein 2, Mint-2, APBA2, MINT2, X11L

**Target/Specificity**

This APBA2 antibody is generated from rabbits immunized with a KLH conjugated synthetic peptide between 307-336 amino acids from the Central region of human APBA2.

**Dilution**

WB~~1:1000

**Format**

Purified polyclonal antibody supplied in PBS with 0.09% (W/V) sodium azide. This antibody is purified through a protein A column, followed by peptide affinity purification.

**Storage**

Maintain refrigerated at 2-8°C for up to 2 weeks. For long term storage store at -20°C in small aliquots to prevent freeze-thaw cycles.

**Precautions**

APBA2 Antibody (Center) is for research use only and not for use in diagnostic or therapeutic procedures.

**APBA2 Antibody (Center) - Protein Information**

**Name** APBA2

**Synonyms** MINT2, X11L

**Function** Putative function in synaptic vesicle exocytosis by binding to STXBP1, an essential component of the synaptic vesicle exocytotic machinery. May modulate processing of the amyloid-beta precursor protein (APP) and hence formation of APP-beta.

**Tissue Location**

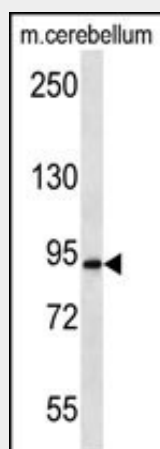
Brain.

### APBA2 Antibody (Center) - Protocols

Provided below are standard protocols that you may find useful for product applications.

- [Western Blot](#)
- [Blocking Peptides](#)
- [Dot Blot](#)
- [Immunohistochemistry](#)
- [Immunofluorescence](#)
- [Immunoprecipitation](#)
- [Flow Cytometry](#)
- [Cell Culture](#)

### APBA2 Antibody (Center) - Images



APBA2 Antibody (Center) (Cat. #AP12659c) western blot analysis in mouse cerebellum tissue lysates (35ug/lane). This demonstrates the APBA2 antibody detected the APBA2 protein (arrow).

### APBA2 Antibody (Center) - Background

The protein encoded by this gene is a member of the X11 protein family. It is a neuronal adapter protein that interacts with the Alzheimer's disease amyloid precursor protein (APP). It stabilizes APP and inhibits production of proteolytic APP fragments including the A beta peptide that is deposited in the brains of Alzheimer's disease patients. This gene product is believed to be involved in signal transduction processes. It is also regarded as a putative vesicular trafficking protein in the brain that can form a complex with the potential to couple synaptic vesicle exocytosis to

neuronal cell adhesion. Multiple transcript variants encoding different isoforms have been found for this gene. [provided by RefSeq].

#### **APBA2 Antibody (Center) - References**

Rose, J.E., et al. Mol. Med. 16 (7-8), 247-253 (2010) :  
Swistowski, A., et al. J. Neurosci. 29(50):15703-15712(2009)  
Mitchell, J.C., et al. Hum. Mol. Genet. 18(23):4492-4500(2009)  
Babatz, T.D., et al. Autism Res 2(6):359-364(2009)  
Chang, S.J., et al. BMC Genomics 10, 613 (2009) :