

GABRA4 Antibody (Center)
Affinity Purified Rabbit Polyclonal Antibody (Pab)
Catalog # AP12665c**Specification**

GABRA4 Antibody (Center) - Product Information

| | |
|-------------------|-----------------------------|
| Application | WB, FC, E |
| Primary Accession | P48169 |
| Other Accession | NP_000800.2 |
| Reactivity | Human |
| Host | Rabbit |
| Clonality | Polyclonal |
| Isotype | Rabbit IgG |
| Calculated MW | 61623 |
| Antigen Region | 333-361 |

GABRA4 Antibody (Center) - Additional Information**Gene ID** 2557**Other Names**

Gamma-aminobutyric acid receptor subunit alpha-4, GABA(A) receptor subunit alpha-4, GABRA4

Target/Specificity

This GABRA4 antibody is generated from rabbits immunized with a KLH conjugated synthetic peptide between 333-361 amino acids from the Central region of human GABRA4.

Dilution

WB~~1:1000

FC~~1:10~50

Format

Purified polyclonal antibody supplied in PBS with 0.09% (W/V) sodium azide. This antibody is purified through a protein A column, followed by peptide affinity purification.

Storage

Maintain refrigerated at 2-8°C for up to 2 weeks. For long term storage store at -20°C in small aliquots to prevent freeze-thaw cycles.

Precautions

GABRA4 Antibody (Center) is for research use only and not for use in diagnostic or therapeutic procedures.

GABRA4 Antibody (Center) - Protein Information**Name** GABRA4**Function** GABA, the major inhibitory neurotransmitter in the vertebrate brain, mediates neuronal

inhibition by binding to the GABA/benzodiazepine receptor and opening an integral chloride channel.

Cellular Location

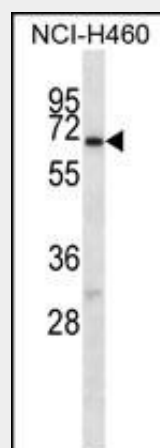
Postsynaptic cell membrane; Multi-pass membrane protein. Cell membrane; Multi-pass membrane protein

GABRA4 Antibody (Center) - Protocols

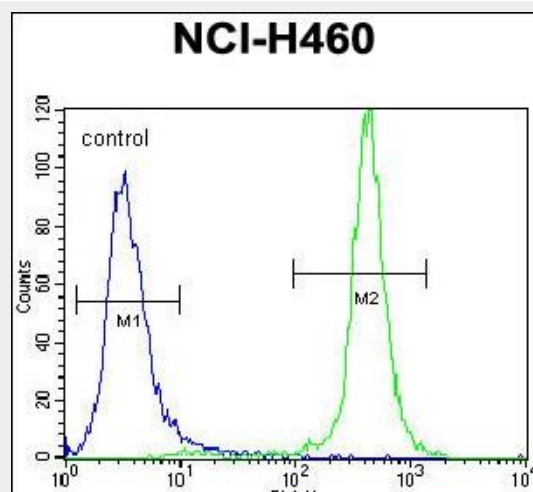
Provided below are standard protocols that you may find useful for product applications.

- [Western Blot](#)
- [Blocking Peptides](#)
- [Dot Blot](#)
- [Immunohistochemistry](#)
- [Immunofluorescence](#)
- [Immunoprecipitation](#)
- [Flow Cytometry](#)
- [Cell Culture](#)

GABRA4 Antibody (Center) - Images



GABRA4 Antibody (Center) (Cat. #AP12665c) western blot analysis in NCI-H460 cell line lysates (35ug/lane). This demonstrates the GABRA4 antibody detected the GABRA4 protein (arrow).



GABRA4 Antibody (Center) (Cat. #AP12665c) flow cytometric analysis of NCI-H460 cells (right histogram) compared to a negative control cell (left histogram). FITC-conjugated goat-anti-rabbit secondary antibodies were used for the analysis.

GABRA4 Antibody (Center) - Background

GABA is the major inhibitory neurotransmitter in the mammalian brain where it acts at GABA-A receptors, which are ligand-gated chloride channels. Chloride conductance of these channels can be modulated by agents such as benzodiazepines that bind to the GABA-A receptor. At least 16 distinct subunits of GABA-A receptors have been identified.

GABRA4 Antibody (Center) - References

Bailey, S.D., et al. Diabetes Care (2010) In press :
Ruano, G., et al. Pharmacogenomics 11(7):959-971(2010)
Pinheiro, A.P., et al. Am. J. Med. Genet. B Neuropsychiatr. Genet. 153B (5), 1070-1080 (2010) :
Talmud, P.J., et al. Am. J. Hum. Genet. 85(5):628-642(2009)
Tabakoff, B., et al. BMC Biol. 7, 70 (2009) :