

**STAMBP Antibody (C-term)**  
**Affinity Purified Rabbit Polyclonal Antibody (Pab)**  
**Catalog # AP12698b****Specification**

---

**STAMBP Antibody (C-term) - Product Information**

Application	WB, IHC-P,E
Primary Accession	<a href="#">O95630</a>
Other Accession	<a href="#">NP_964010.1</a> , <a href="#">NP_006454.1</a>
Reactivity	Human, Mouse
Host	Rabbit
Clonality	Polyclonal
Isotype	Rabbit IgG
Calculated MW	48077
Antigen Region	355-383

**STAMBP Antibody (C-term) - Additional Information****Gene ID** 10617**Other Names**

STAM-binding protein, 3419-, Associated molecule with the SH3 domain of STAM,  
Endosome-associated ubiquitin isopeptidase, STAMBP, AMSH

**Target/Specificity**

This STAMBP antibody is generated from rabbits immunized with a KLH conjugated synthetic peptide between 355-383 amino acids from the C-terminal region of human STAMBP.

**Dilution**

WB~~1:1000  
IHC-P~~1:10~50

**Format**

Purified polyclonal antibody supplied in PBS with 0.09% (W/V) sodium azide. This antibody is purified through a protein A column, followed by peptide affinity purification.

**Storage**

Maintain refrigerated at 2-8°C for up to 2 weeks. For long term storage store at -20°C in small aliquots to prevent freeze-thaw cycles.

**Precautions**

STAMBP Antibody (C-term) is for research use only and not for use in diagnostic or therapeutic procedures.

**STAMBP Antibody (C-term) - Protein Information****Name** STAMBP

**Synonyms** AMSH {ECO:0000303|PubMed:10383417}

**Function** Zinc metalloprotease that specifically cleaves 'Lys-63'- linked polyubiquitin chains (PubMed:[15314065](#), PubMed:[23542699](#), PubMed:[34425109](#)). Does not cleave 'Lys-48'-linked polyubiquitin chains (PubMed:[15314065](#)). Plays a role in signal transduction for cell growth and MYC induction mediated by IL-2 and GM-CSF (PubMed:[10383417](#)). Potentiates BMP (bone morphogenetic protein) signaling by antagonizing the inhibitory action of SMAD6 and SMAD7 (PubMed:[11483516](#)). Has a key role in regulation of cell surface receptor-mediated endocytosis and ubiquitin-dependent sorting of receptors to lysosomes (PubMed:[15314065](#), PubMed:[17261583](#)). Endosomal localization of STAMBP is required for efficient EGFR degradation but not for its internalization (PubMed:[15314065](#), PubMed:[17261583](#)). Involved in the negative regulation of PI3K-AKT-mTOR and RAS-MAP signaling pathways (PubMed:[23542699](#)).

**Cellular Location**

Nucleus. Membrane; Peripheral membrane protein. Cytoplasm. Early endosome

**Tissue Location**

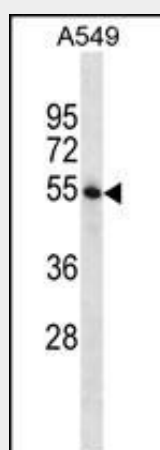
Ubiquitously expressed.

**STAMBP Antibody (C-term) - Protocols**

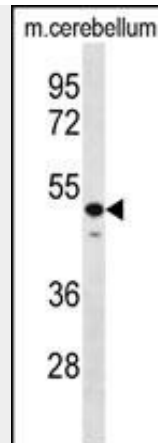
Provided below are standard protocols that you may find useful for product applications.

- [Western Blot](#)
- [Blocking Peptides](#)
- [Dot Blot](#)
- [Immunohistochemistry](#)
- [Immunofluorescence](#)
- [Immunoprecipitation](#)
- [Flow Cytometry](#)
- [Cell Culture](#)

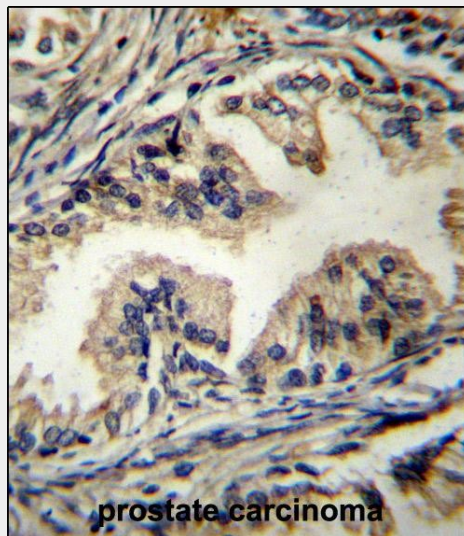
**STAMBP Antibody (C-term) - Images**



STAMBP Antibody (C-term) (Cat. #AP12698b) western blot analysis in A549 cell line lysates (35ug/lane). This demonstrates the STAMBP antibody detected the STAMBP protein (arrow).



STAMPB Antibody (C-term) (Cat. #AP12698b) western blot analysis in mouse cerebellum tissue lysates (35ug/lane). This demonstrates the STAMPB antibody detected the STAMPB protein (arrow).



STAMPB Antibody (C-term) (Cat. #AP12698b) immunohistochemistry analysis in formalin fixed and paraffin embedded human prostate carcinoma followed by peroxidase conjugation of the secondary antibody and DAB staining. This data demonstrates the use of STAMPB Antibody (C-term) for immunohistochemistry. Clinical relevance has not been evaluated.

### **STAMPB Antibody (C-term) - Background**

Cytokine-mediated signal transduction in the JAK-STAT cascade requires the involvement of adaptor molecules. One such signal-transducing adaptor molecule contains an SH3 domain that is required for induction of MYC and cell growth. The protein encoded by this gene binds to the SH3 domain of the signal-transducing adaptor molecule, and plays a critical role in cytokine-mediated signaling for MYC induction and cell cycle progression. Multiple alternatively spliced transcript variants encoding the same protein isoform have been found for this gene.

### **STAMPB Antibody (C-term) - References**

Sierra, M.I., et al. J. Biol. Chem. 285(18):13990-14004(2010)  
Hasdemir, B., et al. J. Biol. Chem. 284(41):28453-28466(2009)  
Venkatesan, K., et al. Nat. Methods 6(1):83-90(2009)

Wang, P., et al. BMC Genomics 10, 518 (2009) :  
Sato, Y., et al. Nature 455(7211):358-362(2008)