

ONECUT1 Antibody (C-term)
Affinity Purified Rabbit Polyclonal Antibody (Pab)
Catalog # AP12709b**Specification**

ONECUT1 Antibody (C-term) - Product Information

| | |
|-------------------|---|
| Application | WB,E |
| Primary Accession | O9UBC0 |
| Other Accession | P70512 , O08755 , NP_004489.1 |
| Reactivity | Human |
| Predicted | Mouse, Rat |
| Host | Rabbit |
| Clonality | Polyclonal |
| Isotype | Rabbit IgG |
| Calculated MW | 51023 |
| Antigen Region | 356-385 |

ONECUT1 Antibody (C-term) - Additional Information**Gene ID** 3175**Other Names**

Hepatocyte nuclear factor 6, HNF-6, One cut domain family member 1, One cut homeobox 1, ONECUT1, HNF6, HNF6A

Target/Specificity

This ONECUT1 antibody is generated from rabbits immunized with a KLH conjugated synthetic peptide between 356-385 amino acids from the C-terminal region of human ONECUT1.

Dilution

WB~~1:1000

Format

Purified polyclonal antibody supplied in PBS with 0.09% (W/V) sodium azide. This antibody is purified through a protein A column, followed by peptide affinity purification.

Storage

Maintain refrigerated at 2-8°C for up to 2 weeks. For long term storage store at -20°C in small aliquots to prevent freeze-thaw cycles.

Precautions

ONECUT1 Antibody (C-term) is for research use only and not for use in diagnostic or therapeutic procedures.

ONECUT1 Antibody (C-term) - Protein Information**Name** ONECUT1

Synonyms HNF6, HNF6A

Function Transcriptional activator. Binds the consensus sequence 5'- DHWATTGAYTWWD-3' on a variety of gene promoters such as those of HNF3B and TTR. Important for liver genes transcription.

Cellular Location

Nucleus.

Tissue Location

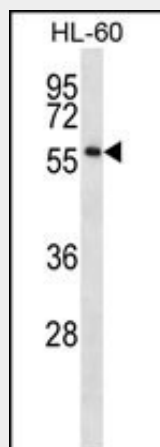
Highly expressed in liver; lower expression in testis and skin

ONECUT1 Antibody (C-term) - Protocols

Provided below are standard protocols that you may find useful for product applications.

- [Western Blot](#)
- [Blocking Peptides](#)
- [Dot Blot](#)
- [Immunohistochemistry](#)
- [Immunofluorescence](#)
- [Immunoprecipitation](#)
- [Flow Cytometry](#)
- [Cell Culture](#)

ONECUT1 Antibody (C-term) - Images



ONECUT1 Antibody (C-term) (Cat. #AP12709b) western blot analysis in HL-60 cell line lysates (35ug/lane). This demonstrates the ONECUT1 antibody detected the ONECUT1 protein (arrow).

ONECUT1 Antibody (C-term) - Background

ONECUT1 is a transcriptional activator. It binds the consensus sequence 5'-DHWATTGAYTWWD-3' on a variety of gene promoters such as those of HNF3B and TTR. It is important for liver genes transcription.

ONECUT1 Antibody (C-term) - References

- Lee, Y.S., et al. Biochem. J. 413(3):559-569(2008)
Jiang, X., et al. Oncol. Rep. 19(1):157-163(2008)
Lehner, F., et al. FASEB J. 21(7):1445-1462(2007)

Rausa, F.M. III, et al. J. Biol. Chem. 279(41):43070-43076(2004)
Thomas, H., et al. Nucleic Acids Res. 32 (19), E150 (2004) :