

**TM4SF1 Antibody (N-term)**  
**Affinity Purified Rabbit Polyclonal Antibody (Pab)**  
**Catalog # AP12712a****Specification**

---

**TM4SF1 Antibody (N-term) - Product Information**

|                   |                             |
|-------------------|-----------------------------|
| Application       | WB, IHC-P,E                 |
| Primary Accession | <a href="#">P30408</a>      |
| Other Accession   | <a href="#">NP_055035.1</a> |
| Reactivity        | Human, Mouse                |
| Host              | Rabbit                      |
| Clonality         | Polyclonal                  |
| Isotype           | Rabbit IgG                  |
| Antigen Region    | 16-45                       |

**TM4SF1 Antibody (N-term) - Additional Information****Gene ID** 4071**Other Names**

Transmembrane 4 L6 family member 1, Membrane component chromosome 3 surface marker 1, Tumor-associated antigen L6, TM4SF1, M3S1, TAAL6

**Target/Specificity**

This TM4SF1 antibody is generated from rabbits immunized with a KLH conjugated synthetic peptide between 16-45 amino acids from the N-terminal region of human TM4SF1.

**Dilution**

WB~~1:1000

IHC-P~~1:10~50

**Format**

Purified polyclonal antibody supplied in PBS with 0.09% (W/V) sodium azide. This antibody is purified through a protein A column, followed by peptide affinity purification.

**Storage**

Maintain refrigerated at 2-8°C for up to 2 weeks. For long term storage store at -20°C in small aliquots to prevent freeze-thaw cycles.

**Precautions**

TM4SF1 Antibody (N-term) is for research use only and not for use in diagnostic or therapeutic procedures.

**TM4SF1 Antibody (N-term) - Protein Information****Name** TM4SF1**Synonyms** M3S1, TAAL6

**Cellular Location**

Membrane; Multi-pass membrane protein. Note=Colocalizes with SDCBP2 in the apical region of the cell (PubMed:11102519).

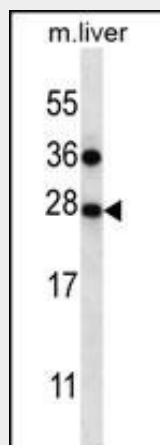
**Tissue Location**

Highly expressed in lung, breast, colon and ovarian carcinomas. It is also present on some normal cells, endothelial cells in particular

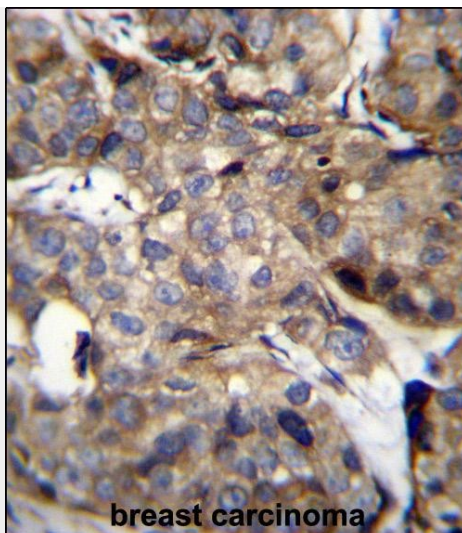
**TM4SF1 Antibody (N-term) - Protocols**

Provided below are standard protocols that you may find useful for product applications.

- [Western Blot](#)
- [Blocking Peptides](#)
- [Dot Blot](#)
- [Immunohistochemistry](#)
- [Immunofluorescence](#)
- [Immunoprecipitation](#)
- [Flow Cytometry](#)
- [Cell Culture](#)

**TM4SF1 Antibody (N-term) - Images**

TM4SF1 Antibody (N-term) (Cat. #AP12712a) western blot analysis in mouse liver tissue lysates (35ug/lane). This demonstrates the TM4SF1 antibody detected the TM4SF1 protein (arrow).



TM4SF1 Antibody (N-term) (Cat. #AP12712a) immunohistochemistry analysis in formalin fixed and paraffin embedded human breast carcinoma followed by peroxidase conjugation of the secondary antibody and DAB staining. This data demonstrates the use of TM4SF1 Antibody (N-term) for immunohistochemistry. Clinical relevance has not been evaluated.

#### **TM4SF1 Antibody (N-term) - Background**

The protein encoded by this gene is a member of the transmembrane 4 superfamily, also known as the tetraspanin family. Most of these members are cell-surface proteins that are characterized by the presence of four hydrophobic domains. The proteins mediate signal transduction events that play a role in the regulation of cell development, activation, growth and motility. This encoded protein is a cell surface antigen and is highly expressed in different carcinomas.

#### **TM4SF1 Antibody (N-term) - References**

Gordon, G.J., et al. J. Natl. Cancer Inst. 101(9):678-686(2009)  
Lekishvili, T., et al. J. Cell. Sci. 121 (PT 5), 685-694 (2008) :  
Stelzl, U., et al. Cell 122(6):957-968(2005)  
Chang, Y.W., et al. Int. J. Cancer 116(2):243-252(2005)  
Kao, Y.R., et al. Clin. Cancer Res. 9(7):2807-2816(2003)

#### **TM4SF1 Antibody (N-term) - Citations**

- [Transmembrane-4-L-six-family-1, a potential predictor for poor prognosis, overexpressed in human glioma.](#)