

**GTPBP10 Antibody (C-term)**  
**Affinity Purified Rabbit Polyclonal Antibody (Pab)**  
**Catalog # AP12715b****Specification**

---

**GTPBP10 Antibody (C-term) - Product Information**

Application	WB,E
Primary Accession	<a href="#">A4D1E9</a>
Other Accession	<a href="#">Q8K013</a> , <a href="#">NP_149098.2</a> , <a href="#">NP_001036182.1</a>
Reactivity	Human, Mouse
Host	Rabbit
Clonality	Polyclonal
Isotype	Rabbit IgG
Calculated MW	42933
Antigen Region	243-271

**GTPBP10 Antibody (C-term) - Additional Information****Gene ID** 85865**Other Names**

GTP-binding protein 10, Protein obg homolog 2, ObgH2, GTPBP10, OBGH2

**Target/Specificity**

This GTPBP10 antibody is generated from rabbits immunized with a KLH conjugated synthetic peptide between 243-271 amino acids from the C-terminal region of human GTPBP10.

**Dilution**

WB~~1:1000

**Format**

Purified polyclonal antibody supplied in PBS with 0.09% (W/V) sodium azide. This antibody is purified through a protein A column, followed by peptide affinity purification.

**Storage**

Maintain refrigerated at 2-8°C for up to 2 weeks. For long term storage store at -20°C in small aliquots to prevent freeze-thaw cycles.

**Precautions**

GTPBP10 Antibody (C-term) is for research use only and not for use in diagnostic or therapeutic procedures.

**GTPBP10 Antibody (C-term) - Protein Information****Name** GTPBP10**Synonyms** OBGH2

**Function** May be involved in the ribosome maturation process. Complements an ObgE(CgtA) function in E.coli ribosome maturation. Plays a role of GTPase in vitro. When missing, disorganization of the nucleolar architecture is observed.

#### **Cellular Location**

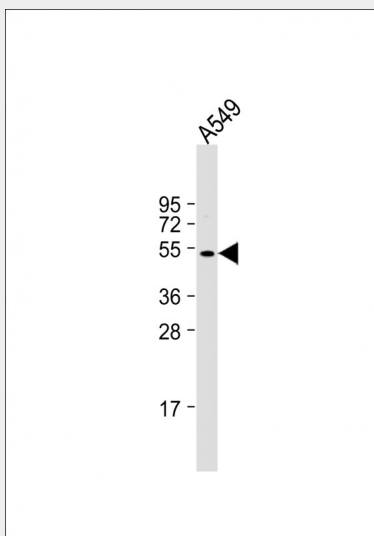
Nucleus, nucleolus. Chromosome. Note=Found in the dense fibrillar compartment region of the nucleolus. At the onset of mitosis moves to the chromosome surface and remains there until anaphase Gradually re-assembles into the nucleolus at late anaphase to telophase

#### **GTPBP10 Antibody (C-term) - Protocols**

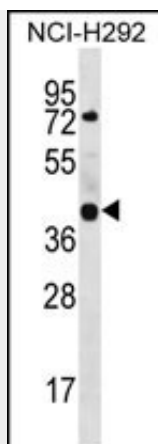
Provided below are standard protocols that you may find useful for product applications.

- [Western Blot](#)
- [Blocking Peptides](#)
- [Dot Blot](#)
- [Immunohistochemistry](#)
- [Immunofluorescence](#)
- [Immunoprecipitation](#)
- [Flow Cytometry](#)
- [Cell Culture](#)

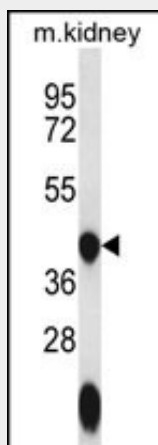
#### **GTPBP10 Antibody (C-term) - Images**



Anti-GTPBP10 Antibody (C-term) at 1:1000 dilution + A549 whole cell lysate Lysates/proteins at 20 µg per lane. Secondary Goat Anti-Rabbit IgG, (H+L), Peroxidase conjugated at 1/10000 dilution. Predicted band size : 43 kDa Blocking/Dilution buffer: 5% NFDM/TBST.



GTPBP10 Antibody (C-term) (Cat. #AP12715b) western blot analysis in NCI-H292 cell line lysates (35ug/lane). This demonstrates the GTPBP10 antibody detected the GTPBP10 protein (arrow).



GTPBP10 Antibody (C-term) (Cat. #AP12715b) western blot analysis in mouse kidney tissue lysates (35ug/lane). This demonstrates the GTPBP10 antibody detected the GTPBP10 protein (arrow).

#### **GTPBP10 Antibody (C-term) - Background**

Small G proteins, such as GTPBP10, act as molecular switches that play crucial roles in the regulation of fundamental cellular processes such as protein synthesis, nuclear transport, membrane trafficking, and signal transduction (Hirano et al., 2006 [PubMed 17054726]).

#### **GTPBP10 Antibody (C-term) - References**

Hirano, Y., et al. Genes Cells 11(11):1295-1304(2006)