

ABCG4 Antibody (N-term)
Affinity Purified Rabbit Polyclonal Antibody (Pab)
Catalog # AP12723A**Specification**

ABCG4 Antibody (N-term) - Product Information

Application	WB,E
Primary Accession	O9H172
Other Accession	NP_001135977.1
Reactivity	Human
Host	Rabbit
Clonality	Polyclonal
Isotype	Rabbit IgG
Calculated MW	71896
Antigen Region	36-65

ABCG4 Antibody (N-term) - Additional Information**Gene ID** 64137**Other Names**

ATP-binding cassette sub-family G member 4, ABCG4, WHITE2

Target/Specificity

This ABCG4 antibody is generated from rabbits immunized with a KLH conjugated synthetic peptide between 36-65 amino acids from the N-terminal region of human ABCG4.

Dilution

WB~~1:1000

Format

Purified polyclonal antibody supplied in PBS with 0.09% (W/V) sodium azide. This antibody is purified through a protein A column, followed by peptide affinity purification.

Storage

Maintain refrigerated at 2-8°C for up to 2 weeks. For long term storage store at -20°C in small aliquots to prevent freeze-thaw cycles.

Precautions

ABCG4 Antibody (N-term) is for research use only and not for use in diagnostic or therapeutic procedures.

ABCG4 Antibody (N-term) - Protein Information**Name** ABCG4 ([HGNC:13884](#))**Synonyms** WHITE2

Function ATP-dependent transporter of the ATP-binding cassette (ABC) family that may be involved in the cellular efflux of sterols, in particular cholesterol and desmosterol (a cholesterol precursor), to high-density lipoprotein (HDL) (PubMed:[15240127](#), PubMed:[33141061](#)). May play an important role in the removal of amyloid-beta peptides from brain, in a process that can be antagonized by desmosterol. However it is unclear whether ABCG4 can directly transport amyloid-beta peptides or whether peptide export may be facilitated due to changes in the membrane lipid environment (By similarity). Induces apoptosis in various cells (PubMed:[27228027](#)).

Cellular Location

Cell membrane; Multi-pass membrane protein. Cytoplasmic vesicle membrane {ECO:0000250|UniProtKB:Q91WA9}; Multi-pass membrane protein. Endosome membrane {ECO:0000250|UniProtKB:Q91WA9}; Multi-pass membrane protein

Tissue Location

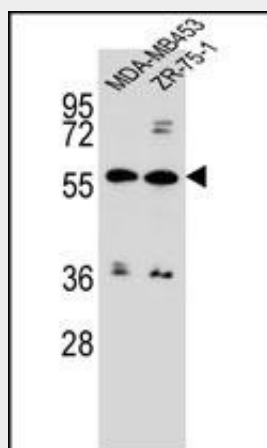
Expressed specifically in the brain and the eye.

ABCG4 Antibody (N-term) - Protocols

Provided below are standard protocols that you may find useful for product applications.

- [Western Blot](#)
- [Blocking Peptides](#)
- [Dot Blot](#)
- [Immunohistochemistry](#)
- [Immunofluorescence](#)
- [Immunoprecipitation](#)
- [Flow Cytometry](#)
- [Cell Culture](#)

ABCG4 Antibody (N-term) - Images



ABCG4 Antibody (N-term) (Cat. #AP12723a) western blot analysis in MDA-MB453,ZR-75-1 cell line lysates (35ug/lane).This demonstrates the ABCG4 antibody detected the ABCG4 protein (arrow).

ABCG4 Antibody (N-term) - Background

The protein encoded by this gene is included in the superfamily of ATP-binding cassette (ABC) transporters. ABC proteins transport various molecules across extra- and

intra-cellular membranes. ABC genes are divided into seven distinct subfamilies (ABC1, MDR/TAP, MRP, ALD, OABP, GCN20, White). This protein is a member of the White subfamily and is expressed predominantly in liver tissue. The function has not yet been determined but may involve cholesterol transport. Alternate splice variants have been described but their full length sequences have not been determined.

ABCG4 Antibody (N-term) - References

Bailey, S.D., et al. Diabetes Care 33(10):2250-2253(2010)
McGeachie, M., et al. Circulation 120(24):2448-2454(2009)
Talmud, P.J., et al. Am. J. Hum. Genet. 85(5):628-642(2009)
Saito, A., et al. J. Hum. Genet. 54(6):317-323(2009)
Koshiba, S., et al. Xenobiotica 38 (7-8), 863-888 (2008) :