

**SGPL1 Antibody (N-term)**  
**Affinity Purified Rabbit Polyclonal Antibody (Pab)**  
**Catalog # AP12736a**

**Specification**

---

**SGPL1 Antibody (N-term) - Product Information**

|                   |                             |
|-------------------|-----------------------------|
| Application       | WB, IHC-P,E                 |
| Primary Accession | <a href="#">O95470</a>      |
| Other Accession   | <a href="#">NP_003892.2</a> |
| Reactivity        | Human                       |
| Host              | Rabbit                      |
| Clonality         | Polyclonal                  |
| Isotype           | Rabbit IgG                  |
| Calculated MW     | 63524                       |
| Antigen Region    | 72-101                      |

**SGPL1 Antibody (N-term) - Additional Information**

**Gene ID** 8879

**Other Names**

Sphingosine-1-phosphate lyase 1, S1PL, SP-lyase 1, SPL 1, hSPL, Sphingosine-1-phosphate aldolase, SGPL1, KIAA1252

**Target/Specificity**

This SGPL1 antibody is generated from rabbits immunized with a KLH conjugated synthetic peptide between 72-101 amino acids from the N-terminal region of human SGPL1.

**Dilution**

WB~~1:1000  
IHC-P~~1:10~50

**Format**

Purified polyclonal antibody supplied in PBS with 0.09% (W/V) sodium azide. This antibody is purified through a protein A column, followed by peptide affinity purification.

**Storage**

Maintain refrigerated at 2-8°C for up to 2 weeks. For long term storage store at -20°C in small aliquots to prevent freeze-thaw cycles.

**Precautions**

SGPL1 Antibody (N-term) is for research use only and not for use in diagnostic or therapeutic procedures.

**SGPL1 Antibody (N-term) - Protein Information**

**Name** SGPL1 ([HGNC:10817](#))

**Function** Cleaves phosphorylated sphingoid bases (PSBs), such as sphingosine-1-phosphate, into fatty aldehydes and phosphoethanolamine. Elevates stress-induced ceramide production and apoptosis (PubMed:[11018465](#), PubMed:[14570870](#), PubMed:[24809814](#), PubMed:[28165339](#)). Required for global lipid homeostasis in liver and cholesterol homeostasis in fibroblasts. Involved in the regulation of pro- inflammatory response and neutrophil trafficking. Modulates neuronal autophagy via phosphoethanolamine production which regulates accumulation of aggregate-prone proteins such as APP (By similarity). Seems to play a role in establishing neuronal contact sites and axonal maintenance (By similarity).

#### Cellular Location

Endoplasmic reticulum membrane; Single-pass type III membrane protein; Cytoplasmic side {ECO:0000250|UniProtKB:Q8R0X7}

#### Tissue Location

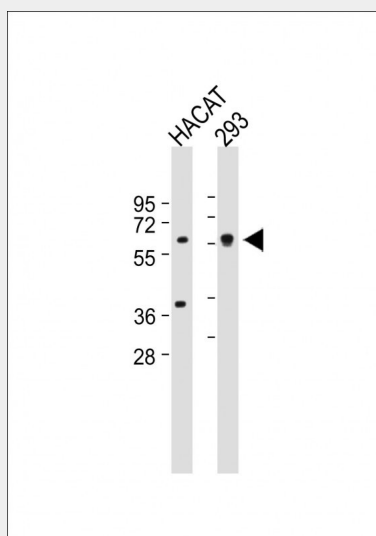
Ubiquitously expressed (PubMed:11018465, PubMed:28165343). Expressed in fetal and adult adrenal gland (at protein level) (PubMed:28165343).

### SGPL1 Antibody (N-term) - Protocols

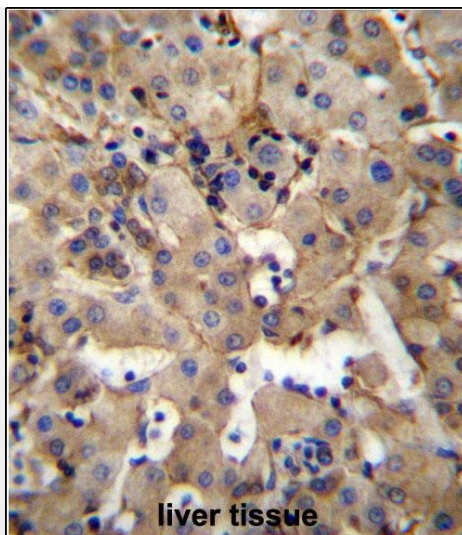
Provided below are standard protocols that you may find useful for product applications.

- [Western Blot](#)
- [Blocking Peptides](#)
- [Dot Blot](#)
- [Immunohistochemistry](#)
- [Immunofluorescence](#)
- [Immunoprecipitation](#)
- [Flow Cytometry](#)
- [Cell Culture](#)

### SGPL1 Antibody (N-term) - Images



All lanes : Anti-SGPL1 Antibody (N-term) at 1:1000 dilution Lane 1: HACAT whole cell lysate Lane 2: 293 whole cell lysate Lysates/proteins at 20 µg per lane. Secondary Goat Anti-Rabbit IgG, (H+L), Peroxidase conjugated at 1/10000 dilution. Predicted band size : 64 kDa Blocking/Dilution buffer: 5% NFDm/TBST.



SGPL1 Antibody (N-term) (Cat. #AP12736a) immunohistochemistry analysis in formalin fixed and paraffin embedded human liver tissue followed by peroxidase conjugation of the secondary antibody and DAB staining. This data demonstrates the use of SGPL1 Antibody (N-term) for immunohistochemistry. Clinical relevance has not been evaluated.

#### **SGPL1 Antibody (N-term) - Background**

SGPL1 cleaves phosphorylated sphingoid bases (PSBs), such as sphingosine-1-phosphate, into fatty aldehydes and phosphoethanolamine. Elevates stress-induced ceramide production and apoptosis.

#### **SGPL1 Antibody (N-term) - References**

Seo, Y.J., et al. J. Virol. 84(16):8124-8131(2010)  
Vogel, P., et al. PLoS ONE 4 (1), E4112 (2009) :  
Peest, U., et al. J. Cell. Biochem. 104(3):756-772(2008)  
Morgan, A.R., et al. Am. J. Med. Genet. B Neuropsychiatr. Genet. 144B (6), 762-770 (2007) :  
Oskouian, B., et al. Proc. Natl. Acad. Sci. U.S.A. 103(46):17384-17389(2006)