

**RAB27B Antibody (Center)**  
**Affinity Purified Rabbit Polyclonal Antibody (Pab)**  
**Catalog # AP12742c****Specification**

---

**RAB27B Antibody (Center) - Product Information**

Application	WB, IHC-P,E
Primary Accession	<a href="#">O00194</a>
Other Accession	<a href="#">Q99P58</a> , <a href="#">NP_004154.2</a>
Reactivity	Human
Predicted	Mouse
Host	Rabbit
Clonality	Polyclonal
Isotype	Rabbit IgG
Calculated MW	24608
Antigen Region	121-150

**RAB27B Antibody (Center) - Additional Information****Gene ID** 5874**Other Names**

Ras-related protein Rab-27B, C25KG, RAB27B

**Target/Specificity**

This RAB27B antibody is generated from rabbits immunized with a KLH conjugated synthetic peptide between 121-150 amino acids from the Central region of human RAB27B.

**Dilution**

WB~~1:1000

IHC-P~~1:10~50

**Format**

Purified polyclonal antibody supplied in PBS with 0.09% (W/V) sodium azide. This antibody is purified through a protein A column, followed by peptide affinity purification.

**Storage**

Maintain refrigerated at 2-8°C for up to 2 weeks. For long term storage store at -20°C in small aliquots to prevent freeze-thaw cycles.

**Precautions**

RAB27B Antibody (Center) is for research use only and not for use in diagnostic or therapeutic procedures.

**RAB27B Antibody (Center) - Protein Information****Name** RAB27B

**Function** Small GTPase which cycles between active GTP-bound and inactive GDP-bound states. In its active state, binds to a variety of effector proteins to regulate homeostasis of late endocytic pathway, including endosomal positioning, maturation and secretion (PubMed:[30771381](#)). Plays a role in NTRK2/TRKB axonal anterograde transport by facilitating the association of NTRK2/TRKB with KLC1 (PubMed:[21775604](#)). May be involved in targeting uroplakins to urothelial apical membranes (By similarity).

**Cellular Location**

Membrane; Lipid-anchor. Late endosome

**Tissue Location**

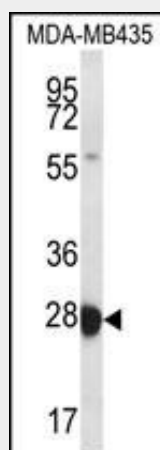
Expressed primarily in testis.

**RAB27B Antibody (Center) - Protocols**

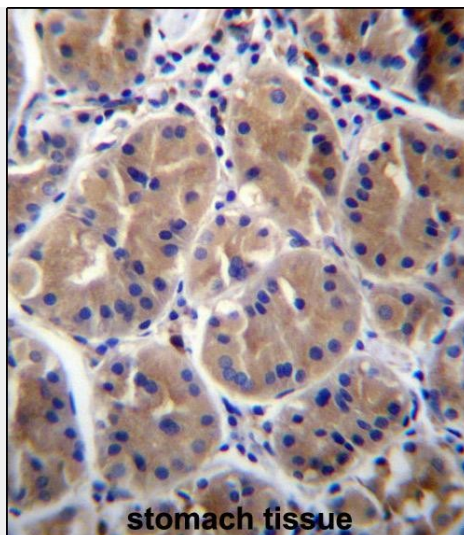
Provided below are standard protocols that you may find useful for product applications.

- [Western Blot](#)
- [Blocking Peptides](#)
- [Dot Blot](#)
- [Immunohistochemistry](#)
- [Immunofluorescence](#)
- [Immunoprecipitation](#)
- [Flow Cytometry](#)
- [Cell Culture](#)

**RAB27B Antibody (Center) - Images**



RAB27B Antibody (Center) (Cat. #AP12742c) western blot analysis in MDA-MB435 cell line lysates (35ug/lane). This demonstrates the RAB27B antibody detected the RAB27B protein (arrow).



RAB27B Antibody (Center) (Cat. #AP12742c) immunohistochemistry analysis in formalin fixed and paraffin embedded human stomach tissue followed by peroxidase conjugation of the secondary antibody and DAB staining. This data demonstrates the use of RAB27B Antibody (Center) for immunohistochemistry. Clinical relevance has not been evaluated.

#### **RAB27B Antibody (Center) - Background**

Members of the Rab protein family, including RAB27B, are prenylated, membrane-bound proteins involved in vesicular fusion and trafficking (Chen et al., 1997 [PubMed 9066979]). [supplied by OMIM].

#### **RAB27B Antibody (Center) - References**

Rose, J.E., et al. Mol. Med. 16 (7-8), 247-253 (2010) :  
Hendrix, A., et al. J. Natl. Cancer Inst. 102(12):866-880(2010)  
Davila, S., et al. Genes Immun. 11(3):232-238(2010)  
Hayasaka, S., et al. Asian J. Androl. 10(4):561-568(2008)  
Shirakawa, R., et al. J. Biol. Chem. 279(11):10730-10737(2004)