

SPOPL Antibody (Center)
Affinity Purified Rabbit Polyclonal Antibody (Pab)
Catalog # AP12768c**Specification**

SPOPL Antibody (Center) - Product Information

Application	WB, IHC-P, FC,E
Primary Accession	O6IQ16
Other Accession	NP_001001664.1
Reactivity	Human
Host	Rabbit
Clonality	Polyclonal
Isotype	Rabbit IgG
Calculated MW	44647
Antigen Region	221-249

SPOPL Antibody (Center) - Additional Information**Gene ID** 339745**Other Names**

Speckle-type POZ protein-like, HIB homolog 2, Roadkill homolog 2, SPOPL

Target/Specificity

This SPOPL antibody is generated from rabbits immunized with a KLH conjugated synthetic peptide between 221-249 amino acids from the Central region of human SPOPL.

Dilution

WB~~1:1000
IHC-P~~1:10~50
FC~~1:10~50

Format

Purified polyclonal antibody supplied in PBS with 0.09% (W/V) sodium azide. This antibody is purified through a protein A column, followed by peptide affinity purification.

Storage

Maintain refrigerated at 2-8°C for up to 2 weeks. For long term storage store at -20°C in small aliquots to prevent freeze-thaw cycles.

Precautions

SPOPL Antibody (Center) is for research use only and not for use in diagnostic or therapeutic procedures.

SPOPL Antibody (Center) - Protein Information**Name** SPOPL

Function Component of a cullin-RING-based BCR (BTB-CUL3-RBX1) E3 ubiquitin-protein ligase complex that mediates the ubiquitination and subsequent proteasomal degradation of target proteins, but with relatively low efficiency. Cullin-RING-based BCR (BTB-CUL3-RBX1) E3 ubiquitin-protein ligase complexes containing homodimeric SPOPL or the heterodimer formed by SPOP and SPOPL are less efficient than ubiquitin ligase complexes containing only SPOP. May function to down-regulate the activity of cullin-RING-based BCR (BTB-CUL3-RBX1) E3 ubiquitin-protein ligase complexes that contain SPOP.

Cellular Location

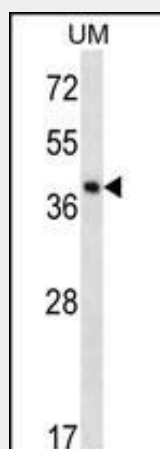
Nucleus.

SPOPL Antibody (Center) - Protocols

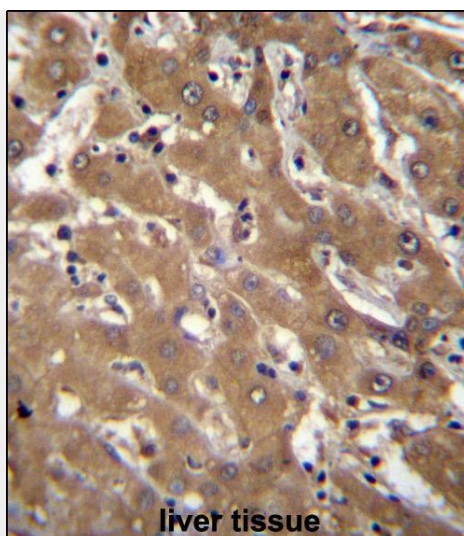
Provided below are standard protocols that you may find useful for product applications.

- [Western Blot](#)
- [Blocking Peptides](#)
- [Dot Blot](#)
- [Immunohistochemistry](#)
- [Immunofluorescence](#)
- [Immunoprecipitation](#)
- [Flow Cytometry](#)
- [Cell Culture](#)

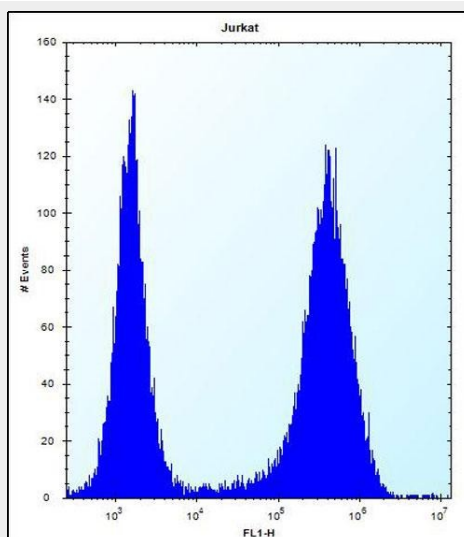
SPOPL Antibody (Center) - Images



SPOPL Antibody (Center) (Cat. #AP12768c) western blot analysis in uterus tumor cell line lysates (35ug/lane). This demonstrates the SPOPL antibody detected the SPOPL protein (arrow).



SPOPL Antibody (Center) (Cat. #AP12768c) immunohistochemistry analysis in formalin fixed and paraffin embedded human liver tissue followed by peroxidase conjugation of the secondary antibody and DAB staining. This data demonstrates the use of SPOPL Antibody (Center) for immunohistochemistry. Clinical relevance has not been evaluated.



SPOPL Antibody (Center) (Cat. #AP12768c) flow cytometric analysis of Jurkat cells (right histogram) compared to a negative control cell (left histogram). FITC-conjugated donkey-anti-rabbit secondary antibodies were used for the analysis.

SPOPL Antibody (Center) - Background

In complex with a cullin, may act in ubiquitination and proteasomal degradation processes (By similarity).

SPOPL Antibody (Center) - References

- Lamesch, P., et al. Genomics 89(3):307-315(2007)
- Zhang, Q., et al. Dev. Cell 10(6):719-729(2006)
- Kent, D., et al. Development 133(10):2001-2010(2006)