

ALKBH4 Antibody (Center)
Affinity Purified Rabbit Polyclonal Antibody (Pab)
Catalog # AP12774C**Specification**

ALKBH4 Antibody (Center) - Product Information

Application	WB,E
Primary Accession	O9NXW9
Other Accession	NP_060091.1
Reactivity	Human, Mouse
Host	Rabbit
Clonality	Polyclonal
Isotype	Rabbit IgG
Calculated MW	33838
Antigen Region	88-117

ALKBH4 Antibody (Center) - Additional Information**Gene ID** 54784**Other Names**

Alpha-ketoglutarate-dependent dioxygenase alkB homolog 4, 11411-, Alkylated DNA repair protein alkB homolog 4, ALKBH4, ABH4

Target/Specificity

This ALKBH4 antibody is generated from rabbits immunized with a KLH conjugated synthetic peptide between 88-117 amino acids from the Central region of human ALKBH4.

Dilution

WB~~1:1000

Format

Purified polyclonal antibody supplied in PBS with 0.09% (W/V) sodium azide. This antibody is purified through a protein A column, followed by peptide affinity purification.

Storage

Maintain refrigerated at 2-8°C for up to 2 weeks. For long term storage store at -20°C in small aliquots to prevent freeze-thaw cycles.

Precautions

ALKBH4 Antibody (Center) is for research use only and not for use in diagnostic or therapeutic procedures.

ALKBH4 Antibody (Center) - Protein Information**Name** ALKBH4 {ECO:0000303|PubMed:21166655, ECO:0000312|HGNC:HGNC:21900}**Function** Dioxygenase that mediates demethylation of actin monomethylated at 'Lys-84'

(K84me1), thereby acting as a regulator of actomyosin-processes (PubMed:[23673617](#)). Demethylation of actin K84me1 is required for maintaining actomyosin dynamics supporting normal cleavage furrow ingression during cytokinesis and cell migration (PubMed:[23673617](#)). In addition to proteins, also demethylates DNA: specifically demethylates DNA methylated on the 6th position of adenine (N(6)-methyladenosine) DNA, thereby regulating Polycomb silencing (By similarity).

Cellular Location

Cytoplasm. Nucleus. Nucleus, nucleolus {ECO:0000250|UniProtKB:Q9D8F1}. Midbody.
Note=Associates with the contractile ring and midbody.

Tissue Location

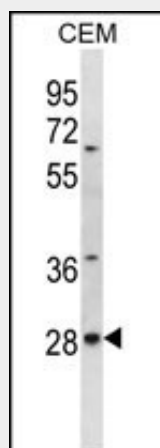
Widely expressed, with highest expression in pancreas, ovary and spleen.

ALKBH4 Antibody (Center) - Protocols

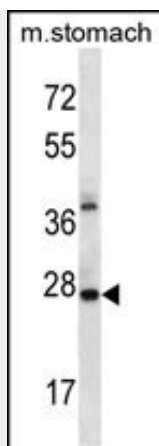
Provided below are standard protocols that you may find useful for product applications.

- [Western Blot](#)
- [Blocking Peptides](#)
- [Dot Blot](#)
- [Immunohistochemistry](#)
- [Immunofluorescence](#)
- [Immunoprecipitation](#)
- [Flow Cytometry](#)
- [Cell Culture](#)

ALKBH4 Antibody (Center) - Images



ALKBH4 Antibody (Center) (Cat. #AP12774c) western blot analysis in CEM cell line lysates (35ug/lane). This demonstrates the ALKBH4 antibody detected the ALKBH4 protein (arrow).



ALKBH4 Antibody (Center) (Cat. #AP12774c) western blot analysis in mouse stomach tissue lysates (35ug/lane). This demonstrates the ALKBH4 antibody detected the ALKBH4 protein (arrow).

ALKBH4 Antibody (Center) - Background

Probable dioxygenase that requires molecular oxygen, alpha-ketoglutarate and iron (By similarity).

ALKBH4 Antibody (Center) - References

Tsujikawa, K., et al. J. Cell. Mol. Med. 11(5):1105-1116(2007)
Lamesch, P., et al. Genomics 89(3):307-315(2007)