

**SAAL1 Antibody (C-term)**  
**Affinity Purified Rabbit Polyclonal Antibody (Pab)**  
**Catalog # AP12794b****Specification**

---

**SAAL1 Antibody (C-term) - Product Information**

Application	WB, IHC-P,E
Primary Accession	<a href="#">O96ER3</a>
Other Accession	<a href="#">NP_612430.2</a>
Reactivity	Human
Host	Rabbit
Clonality	Polyclonal
Isotype	Rabbit IgG
Calculated MW	53558
Antigen Region	357-385

**SAAL1 Antibody (C-term) - Additional Information****Gene ID** 113174**Other Names**

Protein SAAL1, SAAL1

**Target/Specificity**

This SAAL1 antibody is generated from rabbits immunized with a KLH conjugated synthetic peptide between 357-385 amino acids from the C-terminal region of human SAAL1.

**Dilution**

WB~~1:1000

IHC-P~~1:10~50

**Format**

Purified polyclonal antibody supplied in PBS with 0.09% (W/V) sodium azide. This antibody is purified through a protein A column, followed by peptide affinity purification.

**Storage**

Maintain refrigerated at 2-8°C for up to 2 weeks. For long term storage store at -20°C in small aliquots to prevent freeze-thaw cycles.

**Precautions**

SAAL1 Antibody (C-term) is for research use only and not for use in diagnostic or therapeutic procedures.

**SAAL1 Antibody (C-term) - Protein Information****Name** SAAL1**Function** Plays a role in promoting the proliferation of synovial fibroblasts in response to

pro-inflammatory stimuli.

#### Cellular Location

Nucleus.

#### Tissue Location

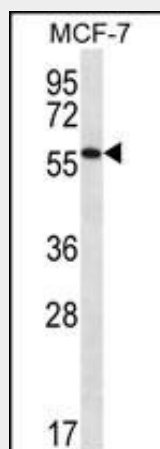
Highly expressed in testis and ovary, and to a lesser extent in the lung, spleen and the heart (at protein level)

### SAAL1 Antibody (C-term) - Protocols

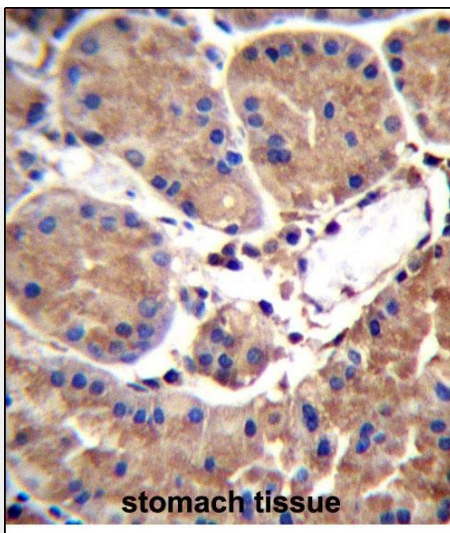
Provided below are standard protocols that you may find useful for product applications.

- [Western Blot](#)
- [Blocking Peptides](#)
- [Dot Blot](#)
- [Immunohistochemistry](#)
- [Immunofluorescence](#)
- [Immunoprecipitation](#)
- [Flow Cytometry](#)
- [Cell Culture](#)

### SAAL1 Antibody (C-term) - Images



SAAL1 Antibody (C-term) (Cat. #AP12794b) western blot analysis in MCF-7 cell line lysates (35ug/lane). This demonstrates the SAAL1 antibody detected the SAAL1 protein (arrow).



SAAL1 Antibody (C-term) (Cat. #AP12794b) immunohistochemistry analysis in formalin fixed and paraffin embedded human stomach tissue followed by peroxidase conjugation of the secondary antibody and DAB staining. This data demonstrates the use of SAAL1 Antibody (C-term) for immunohistochemistry. Clinical relevance has not been evaluated.

#### **SAAL1 Antibody (C-term) - Background**

The function of this protein remains unknown.

#### **SAAL1 Antibody (C-term) - References**

Matsuoka, S., et al. Science 316(5828):1160-1166(2007)

Gerhard, D.S., et al. Genome Res. 14 (10B), 2121-2127 (2004) :