

PTMS Antibody (C-term)
Affinity Purified Rabbit Polyclonal Antibody (Pab)
Catalog # AP12818b**Specification**

PTMS Antibody (C-term) - Product Information

| | |
|-------------------|--|
| Application | WB, FC,E |
| Primary Accession | P20962 |
| Other Accession | P04550 , Q9D0J8 , P08814 , NP_002815.3 |
| Reactivity | Human |
| Predicted | Bovine, Mouse, Rat |
| Host | Rabbit |
| Clonality | Polyclonal |
| Isotype | Rabbit IgG |
| Calculated MW | 11530 |
| Antigen Region | 72-102 |

PTMS Antibody (C-term) - Additional Information**Gene ID** 5763**Other Names**

Parathymosin, PTMS

Target/Specificity

This PTMS antibody is generated from rabbits immunized with a KLH conjugated synthetic peptide between 72-102 amino acids from the C-terminal region of human PTMS.

Dilution

WB~~1:1000

FC~~1:10~50

Format

Purified polyclonal antibody supplied in PBS with 0.09% (W/V) sodium azide. This antibody is purified through a protein A column, followed by peptide affinity purification.

Storage

Maintain refrigerated at 2-8°C for up to 2 weeks. For long term storage store at -20°C in small aliquots to prevent freeze-thaw cycles.

Precautions

PTMS Antibody (C-term) is for research use only and not for use in diagnostic or therapeutic procedures.

PTMS Antibody (C-term) - Protein Information**Name** PTMS

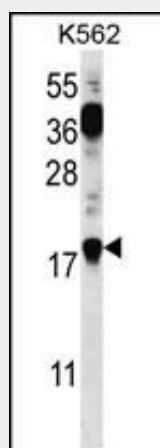
Function Parathymosin may mediate immune function by blocking the effect of prothymosin alpha which confers resistance to certain opportunistic infections.

PTMS Antibody (C-term) - Protocols

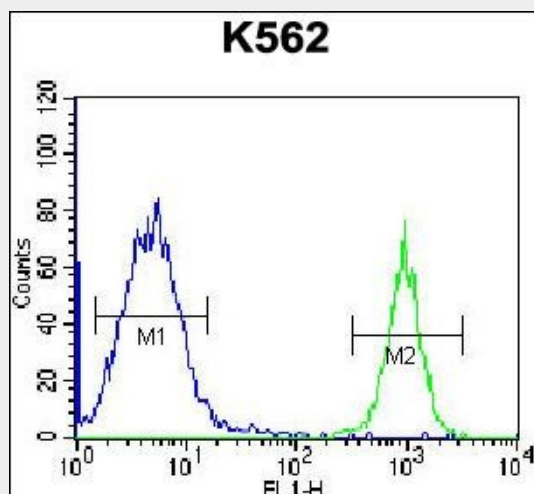
Provided below are standard protocols that you may find useful for product applications.

- [Western Blot](#)
- [Blocking Peptides](#)
- [Dot Blot](#)
- [Immunohistochemistry](#)
- [Immunofluorescence](#)
- [Immunoprecipitation](#)
- [Flow Cytometry](#)
- [Cell Culture](#)

PTMS Antibody (C-term) - Images



PTMS Antibody (C-term) (Cat. #AP12818b) western blot analysis in K562 cell line lysates (35ug/lane). This demonstrates the PTMS antibody detected the PTMS protein (arrow).



PTMS Antibody (C-term) (Cat. #AP12818b) flow cytometric analysis of K562 cells (right histogram) compared to a negative control cell (left histogram). FITC-conjugated goat-anti-rabbit secondary antibodies were used for the analysis.

PTMS Antibody (C-term) - Background

Parathymosin may mediate immune function by blocking the effect of prothymosin alpha which confers resistance to certain opportunistic infections.

PTMS Antibody (C-term) - References

Davila, S., et al. Genes Immun. 11(3):232-238(2010)
Hosgood, H.D. III, et al. Occup Environ Med 66(12):848-853(2009)
Chapuis, J., et al. Mol. Psychiatry 14(11):1004-1016(2009)
Martic, G., et al. J. Biol. Chem. 280(16):16143-16150(2005)
Hannappel, E., et al. Vitam. Horm. 66, 257-296 (2003) :