

ABRA Antibody (C-term)
Affinity Purified Rabbit Polyclonal Antibody (Pab)
Catalog # AP12828b**Specification**

ABRA Antibody (C-term) - Product Information

Application	WB, IHC-P,E
Primary Accession	Q8N0Z2
Other Accession	NP_631905.1
Reactivity	Human
Host	Rabbit
Clonality	Polyclonal
Isotype	Rabbit IgG
Calculated MW	43117
Antigen Region	275-304

ABRA Antibody (C-term) - Additional Information**Gene ID** 137735**Other Names**

Actin-binding Rho-activating protein, Striated muscle activator of Rho-dependent signaling, STARS, ABRA {ECO:0000312|EMBL:AAI051061}

Target/Specificity

This ABRA antibody is generated from rabbits immunized with a KLH conjugated synthetic peptide between 275-304 amino acids from the C-terminal region of human ABRA.

Dilution

WB~~1:1000

IHC-P~~1:10~50

Format

Purified polyclonal antibody supplied in PBS with 0.09% (W/V) sodium azide. This antibody is purified through a protein A column, followed by peptide affinity purification.

Storage

Maintain refrigerated at 2-8°C for up to 2 weeks. For long term storage store at -20°C in small aliquots to prevent freeze-thaw cycles.

Precautions

ABRA Antibody (C-term) is for research use only and not for use in diagnostic or therapeutic procedures.

ABRA Antibody (C-term) - Protein Information**Name** ABRA {ECO:0000312|EMBL:AAI05106.1}

Function Acts as an activator of serum response factor (SRF)-dependent transcription possibly by inducing nuclear translocation of MKL1 or MKL2 and through a mechanism requiring Rho-actin signaling.

Cellular Location

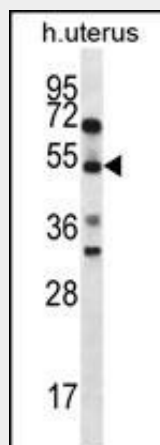
Cytoplasm, myofibril, sarcomere. Cytoplasm, cytoskeleton. Note=Localized to the I-band of the sarcomere and to a lesser extent to the sarcomeric structure between Z-lines.

ABRA Antibody (C-term) - Protocols

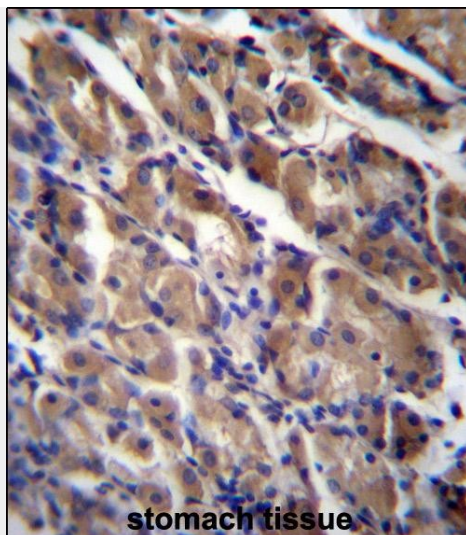
Provided below are standard protocols that you may find useful for product applications.

- [Western Blot](#)
- [Blocking Peptides](#)
- [Dot Blot](#)
- [Immunohistochemistry](#)
- [Immunofluorescence](#)
- [Immunoprecipitation](#)
- [Flow Cytometry](#)
- [Cell Culture](#)

ABRA Antibody (C-term) - Images



ABRA Antibody (C-term) (Cat. #AP12828b) western blot analysis in human normal Uterus tissue lysates (35ug/lane). This demonstrates the ABRA antibody detected the ABRA protein (arrow).



ABRA Antibody (C-term) (Cat. #AP12828b) immunohistochemistry analysis in formalin fixed and paraffin embedded human stomach tissue followed by peroxidase conjugation of the secondary antibody and DAB staining. This data demonstrates the use of ABRA Antibody (C-term) for immunohistochemistry. Clinical relevance has not been evaluated.

ABRA Antibody (C-term) - Background

ABRA acts as an activator of serum response factor (SRF)-dependent transcription possibly by inducing nuclear translocation of MKL1 or MKL2 and through a mechanism requiring Rho-actin signaling (By similarity).

ABRA Antibody (C-term) - References

Lamon, S., et al. J. Physiol. (Lond.) 587 (PT 8), 1795-1803 (2009) : Kuwahara, K., et al. J. Clin. Invest. 117(5):1324-1334(2007) Kuwahara, K., et al. Mol. Cell. Biol. 25(8):3173-3181(2005) Arai, A., et al. J. Biol. Chem. 277(27):24453-24459(2002) Simpson, J.C., et al. EMBO Rep. 1(3):287-292(2000)