

**ALDH3B2 Antibody (C-term)**  
**Affinity Purified Rabbit Polyclonal Antibody (Pab)**  
**Catalog # AP12863B****Specification**

---

**ALDH3B2 Antibody (C-term) - Product Information**

Application	WB, IHC-P,E
Primary Accession	<a href="#">P48448</a>
Other Accession	<a href="#">NP_001026786.1</a>
Reactivity	Human
Host	Rabbit
Clonality	Polyclonal
Isotype	Rabbit IgG
Calculated MW	42635
Antigen Region	252-280

**ALDH3B2 Antibody (C-term) - Additional Information****Other Names**

Aldehyde dehydrogenase family 3 member B2, Aldehyde dehydrogenase 8, ALDH3B2, ALDH8

**Target/Specificity**

This ALDH3B2 antibody is generated from rabbits immunized with a KLH conjugated synthetic peptide between 252-280 amino acids from the C-terminal region of human ALDH3B2.

**Dilution**

WB~~1:1000

IHC-P~~1:10~50

**Format**

Purified polyclonal antibody supplied in PBS with 0.09% (W/V) sodium azide. This antibody is purified through a protein A column, followed by peptide affinity purification.

**Storage**

Maintain refrigerated at 2-8°C for up to 2 weeks. For long term storage store at -20°C in small aliquots to prevent freeze-thaw cycles.

**Precautions**

ALDH3B2 Antibody (C-term) is for research use only and not for use in diagnostic or therapeutic procedures.

**ALDH3B2 Antibody (C-term) - Protein Information**

**Name** ALDH3B2

**Synonyms** ALDH8

**Function** Oxidizes medium and long chain aldehydes into non-toxic fatty acids.

**Cellular Location**

Lipid droplet {ECO:0000250|UniProtKB:E9Q3E1}.

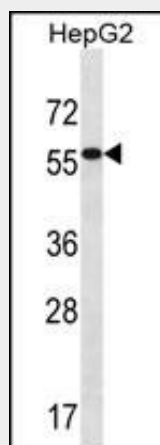
**Tissue Location**

Salivary gland..

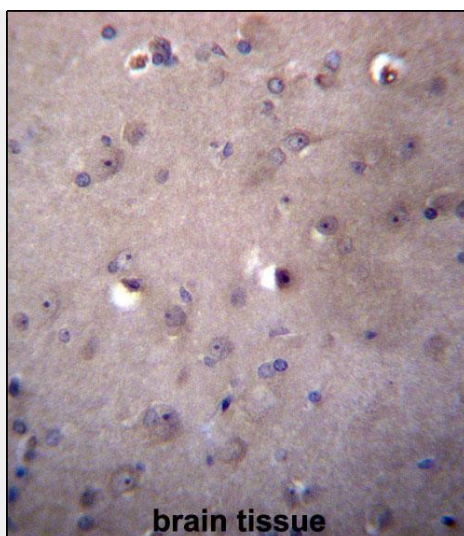
**ALDH3B2 Antibody (C-term) - Protocols**

Provided below are standard protocols that you may find useful for product applications.

- [Western Blot](#)
- [Blocking Peptides](#)
- [Dot Blot](#)
- [Immunohistochemistry](#)
- [Immunofluorescence](#)
- [Immunoprecipitation](#)
- [Flow Cytometry](#)
- [Cell Culture](#)

**ALDH3B2 Antibody (C-term) - Images**

ALDH3B2 Antibody (C-term) (Cat. #AP12863b) western blot analysis in HepG2 cell line lysates (35ug/lane). This demonstrates the ALDH3B2 antibody detected the ALDH3B2 protein (arrow).



ALDH3B2 Antibody (C-term) (Cat. #AP12863b) immunohistochemistry analysis in formalin fixed and paraffin embedded human brain tissue followed by peroxidase conjugation of the secondary antibody and DAB staining. This data demonstrates the use of ALDH3B2 Antibody (C-term) for immunohistochemistry. Clinical relevance has not been evaluated.

#### **ALDH3B2 Antibody (C-term) - Background**

This gene encodes a member of the aldehyde dehydrogenase family, a group of isozymes that may play a major role in the detoxification of aldehydes generated by alcohol metabolism and lipid peroxidation. The gene of this particular family member is over 10 kb in length. The expression of these transcripts is restricted to the salivary gland among the human tissues examined. Alternate transcriptional splice variants have been characterized.

#### **ALDH3B2 Antibody (C-term) - References**

Davila, S., et al. Genes Immun. 11(3):232-238(2010)  
Saito, A., et al. J. Hum. Genet. 54(6):317-323(2009)  
Hsu, L.C., et al. Gene 189(1):89-94(1997)  
Hsu, L.C., et al. Gene 174(2):319-322(1996)  
Hsu, L.C., et al. Adv. Exp. Med. Biol. 372, 159-168 (1995) :