

**PVRL3 Antibody (C-term)**  
**Affinity Purified Rabbit Polyclonal Antibody (Pab)**  
**Catalog # AP12866b**

**Specification**

---

**PVRL3 Antibody (C-term) - Product Information**

Application	WB,E
Primary Accession	<a href="#">O9NQS3</a>
Other Accession	<a href="#">NP_056295.1</a>
Reactivity	Human
Host	Rabbit
Clonality	Polyclonal
Isotype	Rabbit IgG
Calculated MW	61002
Antigen Region	507-536

**PVRL3 Antibody (C-term) - Additional Information**

**Gene ID** 25945

**Other Names**

Nectin-3, CDw113, Poliovirus receptor-related protein 3, CD113, PVRL3, PRR3

**Target/Specificity**

This PVRL3 antibody is generated from rabbits immunized with a KLH conjugated synthetic peptide between 507-536 amino acids from the C-terminal region of human PVRL3.

**Dilution**

WB~~1:1000

**Format**

Purified polyclonal antibody supplied in PBS with 0.09% (W/V) sodium azide. This antibody is purified through a protein A column, followed by peptide affinity purification.

**Storage**

Maintain refrigerated at 2-8°C for up to 2 weeks. For long term storage store at -20°C in small aliquots to prevent freeze-thaw cycles.

**Precautions**

PVRL3 Antibody (C-term) is for research use only and not for use in diagnostic or therapeutic procedures.

**PVRL3 Antibody (C-term) - Protein Information**

**Name** NECTIN3 ([HGNC:17664](#))

**Synonyms** PRR3, PVRL3

**Function** Plays a role in cell-cell adhesion through heterophilic trans-interactions with nectin-like proteins or nectins, such as trans- interaction with NECTIN2 at Sertoli-spermatid junctions. Trans-interaction with PVR induces activation of CDC42 and RAC small G proteins through common signaling molecules such as SRC and RAP1. Also involved in the formation of cell-cell junctions, including adherens junctions and synapses. Induces endocytosis-mediated down-regulation of PVR from the cell surface, resulting in reduction of cell movement and proliferation. Plays a role in the morphology of the ciliary body.

#### **Cellular Location**

Cell membrane; Single-pass membrane protein. Postsynaptic cell membrane

#### **Tissue Location**

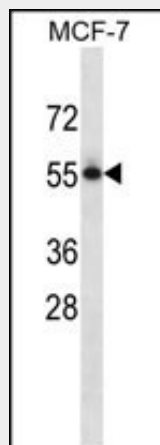
Predominantly expressed in testis and placenta as well as in many cell lines, including epithelial cell lines

### **PVRL3 Antibody (C-term) - Protocols**

Provided below are standard protocols that you may find useful for product applications.

- [Western Blot](#)
- [Blocking Peptides](#)
- [Dot Blot](#)
- [Immunohistochemistry](#)
- [Immunofluorescence](#)
- [Immunoprecipitation](#)
- [Flow Cytometry](#)
- [Cell Culture](#)

### **PVRL3 Antibody (C-term) - Images**



PVRL3 Antibody (C-term) (Cat. #AP12866b) western blot analysis in MCF-7 cell line lysates (35ug/lane). This demonstrates the PVRL3 antibody detected the PVRL3 protein (arrow).

### **PVRL3 Antibody (C-term) - Background**

Nectins (e.g., PVRL1; MIM 600644) are immunoglobulin-like adhesion molecules that interact with afadin (AF6; MIM 159559). Afadin is an actin filament-binding protein that connects nectins to the actin cytoskeleton. The nectin-afadin system organizes adherens junctions cooperatively with the cadherin (see MIM

192090)-catenin (see MIM 116805) system in epithelial cells.

#### **PVRL3 Antibody (C-term) - References**

Bailey, S.D., et al. Diabetes Care 33(10):2250-2253(2010)  
Jugessur, A., et al. PLoS ONE 5 (7), E11493 (2010) :  
Talmud, P.J., et al. Am. J. Hum. Genet. 85(5):628-642(2009)  
Yu, X., et al. Nat. Immunol. 10(1):48-57(2009)  
Fujito, T., et al. J. Cell Biol. 171(1):165-173(2005)