

SLAMF8 Antibody (C-term)
Affinity Purified Rabbit Polyclonal Antibody (Pab)
Catalog # AP12868b**Specification**

SLAMF8 Antibody (C-term) - Product Information

Application	WB,E
Primary Accession	O9P0V8
Other Accession	NP_064510.1
Reactivity	Human
Host	Rabbit
Clonality	Polyclonal
Isotype	Rabbit IgG
Calculated MW	31670
Antigen Region	256-285

SLAMF8 Antibody (C-term) - Additional Information**Gene ID** 56833**Other Names**

SLAM family member 8, B-lymphocyte activator macrophage expressed, BCM-like membrane protein, CD353, SLAMF8, BLAME

Target/Specificity

This SLAMF8 antibody is generated from rabbits immunized with a KLH conjugated synthetic peptide between 256-285 amino acids from the C-terminal region of human SLAMF8.

Dilution

WB~~1:1000

Format

Purified polyclonal antibody supplied in PBS with 0.09% (W/V) sodium azide. This antibody is purified through a protein A column, followed by peptide affinity purification.

Storage

Maintain refrigerated at 2-8°C for up to 2 weeks. For long term storage store at -20°C in small aliquots to prevent freeze-thaw cycles.

Precautions

SLAMF8 Antibody (C-term) is for research use only and not for use in diagnostic or therapeutic procedures.

SLAMF8 Antibody (C-term) - Protein Information**Name** SLAMF8**Synonyms** BLAME

Function May play a role in B-lineage commitment and/or modulation of signaling through the B-cell receptor.

Cellular Location

Membrane; Single-pass type I membrane protein.

Tissue Location

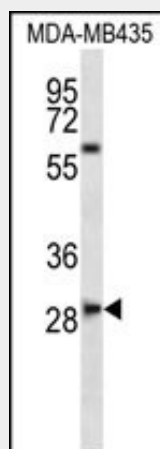
Expressed in lymph node, spleen, thymus and bone marrow.

SLAMF8 Antibody (C-term) - Protocols

Provided below are standard protocols that you may find useful for product applications.

- [Western Blot](#)
- [Blocking Peptides](#)
- [Dot Blot](#)
- [Immunohistochemistry](#)
- [Immunofluorescence](#)
- [Immunoprecipitation](#)
- [Flow Cytometry](#)
- [Cell Culture](#)

SLAMF8 Antibody (C-term) - Images



SLAMF8 Antibody (C-term) (Cat. #AP12868b) western blot analysis in MDA-MB435 cell line lysates (35ug/lane). This demonstrates the SLAMF8 antibody detected the SLAMF8 protein (arrow).

SLAMF8 Antibody (C-term) - Background

This gene encodes a member of the CD2 family of cell surface proteins involved in lymphocyte activation. These proteins are characterized by Ig domains. This protein is expressed in lymphoid tissues, and studies of a similar protein in mouse suggest that it may function during B cell lineage commitment. The gene is found in a region of chromosome 1 containing many CD2 genes.

SLAMF8 Antibody (C-term) - References

Davila, S., et al. Genes Immun. 11(3):232-238(2010)
Zhang, Z., et al. Protein Sci. 13(10):2819-2824(2004)

Tangye, S.G., et al. J. Immunol. 171(5):2485-2495(2003)
Kingsbury, G.A., et al. J. Immunol. 166(9):5675-5680(2001)