

**SLC15A3 Antibody (Center)**  
**Affinity Purified Rabbit Polyclonal Antibody (Pab)**  
**Catalog # AP12933C**

**Specification**

---

**SLC15A3 Antibody (Center) - Product Information**

Application	WB, IHC-P,E
Primary Accession	<a href="#">Q8IY34</a>
Other Accession	<a href="#">Q924V4</a> , <a href="#">Q8BPX9</a> , <a href="#">NP_057666.1</a>
Reactivity	Human
Predicted	Mouse, Rat
Host	Rabbit
Clonality	Polyclonal
Isotype	Rabbit IgG
Calculated MW	63560
Antigen Region	168-197

**SLC15A3 Antibody (Center) - Additional Information**

**Gene ID** 51296

**Other Names**

Solute carrier family 15 member 3, Osteoclast transporter, Peptide transporter 3, Peptide/histidine transporter 2, SLC15A3, OCTP, PHT2, PTR3

**Target/Specificity**

This SLC15A3 antibody is generated from rabbits immunized with a KLH conjugated synthetic peptide between 168-197 amino acids from the Central region of human SLC15A3.

**Dilution**

WB~~1:2000  
IHC-P~~1:10~50

**Format**

Purified polyclonal antibody supplied in PBS with 0.09% (W/V) sodium azide. This antibody is purified through a protein A column, followed by peptide affinity purification.

**Storage**

Maintain refrigerated at 2-8°C for up to 2 weeks. For long term storage store at -20°C in small aliquots to prevent freeze-thaw cycles.

**Precautions**

SLC15A3 Antibody (Center) is for research use only and not for use in diagnostic or therapeutic procedures.

**SLC15A3 Antibody (Center) - Protein Information**

**Name** SLC15A3 ([HGNC:18068](#))

**Function** Proton-coupled amino-acid transporter that transports free histidine and certain di- and tripeptides, and is involved in innate immune response (By similarity). Also able to transport carnosine (PubMed:[31073693](#), PubMed:[31254495](#)). Involved in the detection of microbial pathogens by toll-like receptors (TLRs) and NOD-like receptors (NLRs), probably by mediating transport of bacterial peptidoglycans across the endolysosomal membrane: catalyzes the transport of certain bacterial peptidoglycans, such as muramyl dipeptide (MDP), the NOD2 ligand (By similarity).

#### Cellular Location

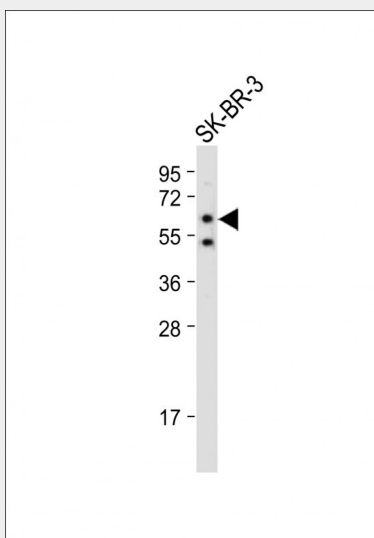
Lysosome membrane; Multi-pass membrane protein. Endosome membrane {ECO:0000250|UniProtKB:Q8BPX9}; Multi-pass membrane protein

### SLC15A3 Antibody (Center) - Protocols

Provided below are standard protocols that you may find useful for product applications.

- [Western Blot](#)
- [Blocking Peptides](#)
- [Dot Blot](#)
- [Immunohistochemistry](#)
- [Immunofluorescence](#)
- [Immunoprecipitation](#)
- [Flow Cytometry](#)
- [Cell Culture](#)

### SLC15A3 Antibody (Center) - Images



Anti-SLC15A3 Antibody (Center) at 1:2000 dilution + SK-BR-3 whole cell lysate Lysates/proteins at 20 µg per lane. Secondary Goat Anti-Rabbit IgG, (H+L), Peroxidase conjugated at 1/10000 dilution. Predicted band size : 64 kDa Blocking/Dilution buffer: 5% NFDM/TBST.



SLC15A3 Antibody (Center) (Cat. #AP12933c) immunohistochemistry analysis in formalin fixed and paraffin embedded human placenta tissue followed by peroxidase conjugation of the secondary antibody and DAB staining. This data demonstrates the use of SLC15A3 Antibody (Center) for immunohistochemistry. Clinical relevance has not been evaluated.

#### **SLC15A3 Antibody (Center) - Background**

SLC15A3 is proton oligopeptide cotransporter. Transports free histidine and certain di- and tripeptides (By similarity).

#### **SLC15A3 Antibody (Center) - References**

Daniel, H., et al. Pflugers Arch. 447(5):610-618(2004) Sakata, K., et al. Biochem. J. 356 (PT 1), 53-60 (2001) : Botka, C.W., et al. AAPS PharmSci 2 (2), E16 (2000) :