

SCLT1 Antibody (C-term)
Affinity Purified Rabbit Polyclonal Antibody (Pab)
Catalog # AP12942b**Specification**

SCLT1 Antibody (C-term) - Product Information

Application	WB, IHC-P,E
Primary Accession	O96NL6
Other Accession	NP_653244.2
Reactivity	Human
Host	Rabbit
Clonality	Polyclonal
Isotype	Rabbit IgG
Calculated MW	80910
Antigen Region	577-605

SCLT1 Antibody (C-term) - Additional Information**Gene ID** 132320**Other Names**

Sodium channel and clathrin linker 1, Sodium channel-associated protein 1, SCLT1, SAP1

Target/Specificity

This SCLT1 antibody is generated from rabbits immunized with a KLH conjugated synthetic peptide between 577-605 amino acids from the C-terminal region of human SCLT1.

Dilution

WB~~1:1000

IHC-P~~1:10~50

Format

Purified polyclonal antibody supplied in PBS with 0.09% (W/V) sodium azide. This antibody is purified through a protein A column, followed by peptide affinity purification.

Storage

Maintain refrigerated at 2-8°C for up to 2 weeks. For long term storage store at -20°C in small aliquots to prevent freeze-thaw cycles.

Precautions

SCLT1 Antibody (C-term) is for research use only and not for use in diagnostic or therapeutic procedures.

SCLT1 Antibody (C-term) - Protein Information**Name** SCLT1**Synonyms** SAP1

Function Adapter protein that links SCN10A to clathrin. Regulates SCN10A channel activity, possibly by promoting channel internalization (By similarity).

Cellular Location

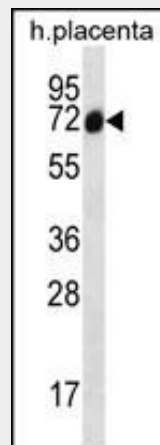
Cytoplasm, cytoskeleton, microtubule organizing center, centrosome, centriole Note=Localizes to the distal appendage region of the centriole, which anchors the mother centriole to the plasma membrane

SCLT1 Antibody (C-term) - Protocols

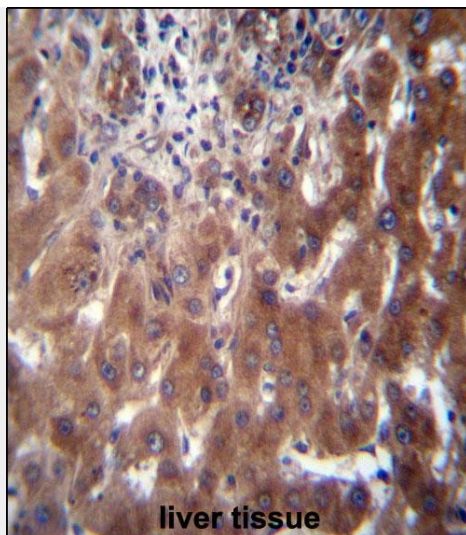
Provided below are standard protocols that you may find useful for product applications.

- [Western Blot](#)
- [Blocking Peptides](#)
- [Dot Blot](#)
- [Immunohistochemistry](#)
- [Immunofluorescence](#)
- [Immunoprecipitation](#)
- [Flow Cytometry](#)
- [Cell Culture](#)

SCLT1 Antibody (C-term) - Images



SCLT1 Antibody (C-term) (Cat. #AP12942b) western blot analysis in human placenta tissue lysates (35ug/lane). This demonstrates the SCLT1 antibody detected the SCLT1 protein (arrow).



SCLT1 Antibody (C-term) (Cat. #AP12942b) immunohistochemistry analysis in formalin fixed and paraffin embedded human liver tissue followed by peroxidase conjugation of the secondary antibody and DAB staining. This data demonstrates the use of SCLT1 Antibody (C-term) for immunohistochemistry. Clinical relevance has not been evaluated.

SCLT1 Antibody (C-term) - Background

SCLT1 acts as a linker protein between the voltage-gated sodium channel Na(v)1.8 (SCN10A; MIM 604427) and clathrin (see CLTC, MIM 118955) (Liu et al., 2005 [PubMed 15797711]). [supplied by OMIM].

SCLT1 Antibody (C-term) - References

Liu, C., et al. Mol. Cell. Neurosci. 28(4):636-649(2005)
Tomarev, S.I., et al. Invest. Ophthalmol. Vis. Sci. 44(6):2588-2596(2003)