

**CDH19 Antibody (C-term)**  
**Affinity Purified Rabbit Polyclonal Antibody (Pab)**  
**Catalog # AP12951B****Specification**

---

**CDH19 Antibody (C-term) - Product Information**

Application	WB, IHC-P,E
Primary Accession	<a href="#">Q9H159</a>
Other Accession	<a href="#">NP_066976.1</a>
Reactivity	Human
Host	Rabbit
Clonality	Polyclonal
Isotype	Rabbit IgG
Calculated MW	87002
Antigen Region	613-640

**CDH19 Antibody (C-term) - Additional Information****Gene ID** 28513**Other Names**

Cadherin-19, CDH19, CDH7L2

**Target/Specificity**

This CDH19 antibody is generated from rabbits immunized with a KLH conjugated synthetic peptide between 613-640 amino acids from the C-terminal region of human CDH19.

**Dilution**

WB~~1:1000

IHC-P~~1:10~50

**Format**

Purified polyclonal antibody supplied in PBS with 0.09% (W/V) sodium azide. This antibody is purified through a protein A column, followed by peptide affinity purification.

**Storage**

Maintain refrigerated at 2-8°C for up to 2 weeks. For long term storage store at -20°C in small aliquots to prevent freeze-thaw cycles.

**Precautions**

CDH19 Antibody (C-term) is for research use only and not for use in diagnostic or therapeutic procedures.

**CDH19 Antibody (C-term) - Protein Information****Name** CDH19**Synonyms** CDH7L2

**Function** Cadherins are calcium-dependent cell adhesion proteins. They preferentially interact with themselves in a homophilic manner in connecting cells; cadherins may thus contribute to the sorting of heterogeneous cell types.

**Cellular Location**

Cell membrane; Single-pass type I membrane protein

**Tissue Location**

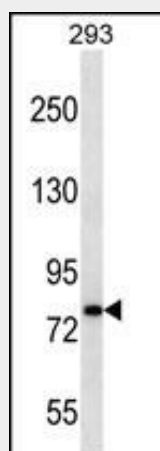
Expressed in many tissues, with the exception of uterus

**CDH19 Antibody (C-term) - Protocols**

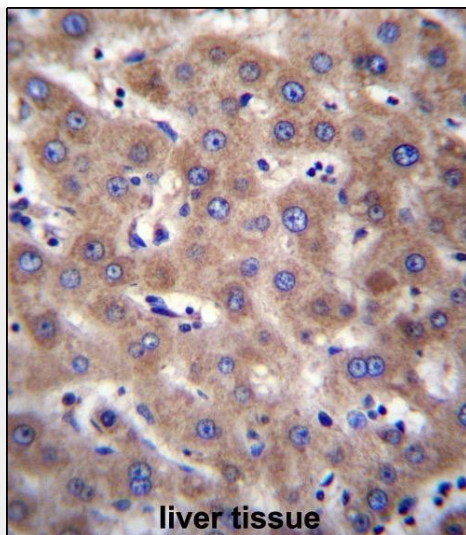
Provided below are standard protocols that you may find useful for product applications.

- [Western Blot](#)
- [Blocking Peptides](#)
- [Dot Blot](#)
- [Immunohistochemistry](#)
- [Immunofluorescence](#)
- [Immunoprecipitation](#)
- [Flow Cytometry](#)
- [Cell Culture](#)

**CDH19 Antibody (C-term) - Images**



CDH19 Antibody (C-term) (Cat. #AP12951b) western blot analysis in 293 cell line lysates (35ug/lane). This demonstrates the CDH19 antibody detected the CDH19 protein (arrow).



CDH19 Antibody (C-term) (Cat. #AP12951b) immunohistochemistry analysis in formalin fixed and paraffin embedded human liver tissue followed by peroxidase conjugation of the secondary antibody and DAB staining. This data demonstrates the use of CDH19 Antibody (C-term) for immunohistochemistry. Clinical relevance has not been evaluated.

#### **CDH19 Antibody (C-term) - Background**

This gene is a type II classical cadherin from the cadherin superfamily and one of three cadherin 7-like genes located in a cluster on chromosome 18. The encoded membrane protein is a calcium dependent cell-cell adhesion glycoprotein comprised of five extracellular cadherin repeats, a transmembrane region and a highly conserved cytoplasmic tail. Type II (atypical) cadherins are defined based on their lack of a HAV cell adhesion recognition sequence specific to type I cadherins. Since disturbance of intracellular adhesion is a prerequisite for invasion and metastasis of tumor cells, cadherins are considered prime candidates for tumor suppressor genes.

#### **CDH19 Antibody (C-term) - References**

Need, A.C., et al. Hum. Mol. Genet. 18(23):4650-4661(2009)  
Clark, H.F., et al. Genome Res. 13(10):2265-2270(2003)  
Kools, P., et al. Genomics 68(3):283-295(2000)  
Shimoyama, Y., et al. Biochem. J. 349 (PT 1), 159-167 (2000) :  
Kremmidiotis, G., et al. Genomics 49(3):467-471(1998)