

GRIP2 Antibody (Center)
Affinity Purified Rabbit Polyclonal Antibody (Pab)
Catalog # AP12980C**Specification**

GRIP2 Antibody (Center) - Product Information

| | |
|-------------------|--------------------------------|
| Application | WB, IHC-P,E |
| Primary Accession | O9C0E4 |
| Other Accession | NP_001073892.2 |
| Reactivity | Human |
| Host | Rabbit |
| Clonality | Polyclonal |
| Isotype | Rabbit IgG |
| Calculated MW | 112573 |
| Antigen Region | 620-649 |

GRIP2 Antibody (Center) - Additional Information**Gene ID** 80852**Other Names**

Glutamate receptor-interacting protein 2, GRIP-2, GRIP2, KIAA1719

Target/Specificity

This GRIP2 antibody is generated from rabbits immunized with a KLH conjugated synthetic peptide between 620-649 amino acids from the Central region of human GRIP2.

Dilution

WB~~1:1000

IHC-P~~1:10~50

Format

Purified polyclonal antibody supplied in PBS with 0.09% (W/V) sodium azide. This antibody is purified through a protein A column, followed by peptide affinity purification.

Storage

Maintain refrigerated at 2-8°C for up to 2 weeks. For long term storage store at -20°C in small aliquots to prevent freeze-thaw cycles.

Precautions

GRIP2 Antibody (Center) is for research use only and not for use in diagnostic or therapeutic procedures.

GRIP2 Antibody (Center) - Protein Information**Name** GRIP2 ([HGNC:23841](#))**Function** May play a role as a localized scaffold for the assembly of a multiprotein signaling

complex and as mediator of the trafficking of its binding partners at specific subcellular location in neurons.

Cellular Location

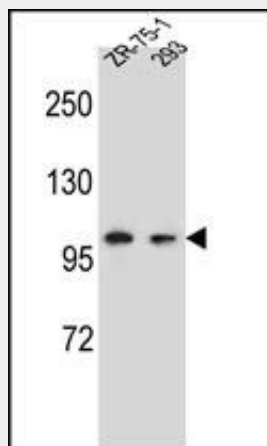
Cytoplasm. Membrane; Peripheral membrane protein

GRIP2 Antibody (Center) - Protocols

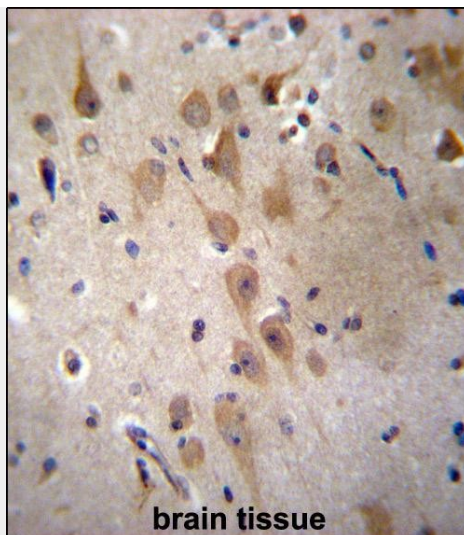
Provided below are standard protocols that you may find useful for product applications.

- [Western Blot](#)
- [Blocking Peptides](#)
- [Dot Blot](#)
- [Immunohistochemistry](#)
- [Immunofluorescence](#)
- [Immunoprecipitation](#)
- [Flow Cytometry](#)
- [Cell Culture](#)

GRIP2 Antibody (Center) - Images



GRIP2 Antibody (Center) (Cat. #AP12980c) western blot analysis in ZR-75-1,293 cell line lysates (35ug/lane). This demonstrates the GRIP2 antibody detected the GRIP2 protein (arrow).



GRIP2 Antibody (Center) (Cat. #AP12980c) immunohistochemistry analysis in formalin fixed and paraffin embedded human brain tissue followed by peroxidase conjugation of the secondary antibody and DAB staining. This data demonstrates the use of GRIP2 Antibody (Center) for immunohistochemistry. Clinical relevance has not been evaluated.

GRIP2 Antibody (Center) - Background

GRIP2 may play a role as a localized scaffold for the assembly of a multiprotein signaling complex and as mediator of the trafficking of its binding partners at specific subcellular location in neurons (By similarity).

GRIP2 Antibody (Center) - References

Rose, J.E., et al. Mol. Med. 16 (7-8), 247-253 (2010) :
Need, A.C., et al. Hum. Mol. Genet. 18(23):4650-4661(2009)
Wu, C., et al. Proteomics 7(11):1775-1785(2007)
Lu, W., et al. Neuron 47(3):407-421(2005)
Lin, S.H., et al. Mol. Pharmacol. 60(5):916-923(2001)