

**FGD4 Antibody (N-term)**  
**Affinity Purified Rabbit Polyclonal Antibody (Pab)**  
**Catalog # AP12983a**

**Specification**

---

**FGD4 Antibody (N-term) - Product Information**

Application	WB,E
Primary Accession	<a href="#">O96M96</a>
Other Accession	<a href="#">NP_640334.2</a>
Reactivity	Human
Host	Rabbit
Clonality	Polyclonal
Isotype	Rabbit IgG
Calculated MW	86626
Antigen Region	157-186

**FGD4 Antibody (N-term) - Additional Information**

**Gene ID** 121512

**Other Names**

FYVE, RhoGEF and PH domain-containing protein 4, Actin filament-binding protein frabin, FGD1-related F-actin-binding protein, Zinc finger FYVE domain-containing protein 6, FGD4, FRABP, ZFYVE6

**Target/Specificity**

This FGD4 antibody is generated from rabbits immunized with a KLH conjugated synthetic peptide between 157-186 amino acids from the N-terminal region of human FGD4.

**Dilution**

WB~~1:1000

**Format**

Purified polyclonal antibody supplied in PBS with 0.09% (W/V) sodium azide. This antibody is purified through a protein A column, followed by peptide affinity purification.

**Storage**

Maintain refrigerated at 2-8°C for up to 2 weeks. For long term storage store at -20°C in small aliquots to prevent freeze-thaw cycles.

**Precautions**

FGD4 Antibody (N-term) is for research use only and not for use in diagnostic or therapeutic procedures.

**FGD4 Antibody (N-term) - Protein Information**

**Name** FGD4

**Synonyms** FRABP, ZFYVE6

**Function** Activates CDC42, a member of the Ras-like family of Rho- and Rac proteins, by exchanging bound GDP for free GTP. Plays a role in regulating the actin cytoskeleton and cell shape. Activates MAPK8 (By similarity).

**Cellular Location**

Cytoplasm, cytoskeleton. Cell projection, filopodium. Note=Concentrated in filopodia and poorly detected at lamellipodia. Binds along the sides of actin fibers (By similarity).

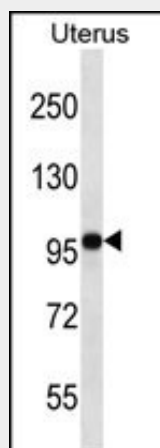
**Tissue Location**

Expressed in different tissues, including brain, cerebellum, peripheral nerve, skeletal muscle, heart, uterus, placenta and testis.

**FGD4 Antibody (N-term) - Protocols**

Provided below are standard protocols that you may find useful for product applications.

- [Western Blot](#)
- [Blocking Peptides](#)
- [Dot Blot](#)
- [Immunohistochemistry](#)
- [Immunofluorescence](#)
- [Immunoprecipitation](#)
- [Flow Cytometry](#)
- [Cell Culture](#)

**FGD4 Antibody (N-term) - Images**

FGD4 Antibody (N-term) (Cat. #AP12983a) western blot analysis in human normal Uterus tissue lysates (35ug/lane). This demonstrates the FGD4 antibody detected the FGD4 protein (arrow).

**FGD4 Antibody (N-term) - Background**

This gene encodes a protein that is involved in the regulation of the actin cytoskeleton and cell shape. This protein contains an actin filament-binding domain, which together with its DbpA homology domain and one of its pleckstrin homology domains, can form microspikes. This protein can activate MAPK8 independently of the actin filament-binding domain, and it is also involved in the activation of CDC42 via the exchange of bound GDP for free GTP. The activation of CDC42 also enables this protein to play a role in mediating the cellular invasion of *Cryptosporidium parvum*, an

intracellular parasite that infects the gastrointestinal tract. Mutations in this gene can cause Charcot-Marie-Tooth disease type 4H (CMT4H), a disorder of the peripheral nervous system. [provided by RefSeq].

#### **FGD4 Antibody (N-term) - References**

Rose, J. Phd, et al. Mol. Med. (2010) In press : Fabrizi, G.M., et al. Neurology 72(13):1160-1164(2009) Houlden, H., et al. Neurology 72(7):617-620(2009) Horlock, C., et al. Int. Arch. Allergy Immunol. 150(3):237-251(2009) Stendel, C., et al. Am. J. Hum. Genet. 81(1):158-164(2007)