

RRP7A Antibody (C-term)
Affinity Purified Rabbit Polyclonal Antibody (Pab)
Catalog # AP12998b**Specification**

RRP7A Antibody (C-term) - Product Information

| | |
|-------------------|---|
| Application | WB,E |
| Primary Accession | O9Y3A4 |
| Other Accession | O9NSQ0 , O9D1C9 , NP_056518.2 |
| Reactivity | Human |
| Predicted | Mouse |
| Host | Rabbit |
| Clonality | Polyclonal |
| Isotype | Rabbit IgG |
| Calculated MW | 32334 |
| Antigen Region | 240-269 |

RRP7A Antibody (C-term) - Additional Information**Gene ID** 27341**Other Names**

Ribosomal RNA-processing protein 7 homolog A, Gastric cancer antigen Zg14, RRP7A

Target/Specificity

This RRP7A antibody is generated from rabbits immunized with a KLH conjugated synthetic peptide between 240-269 amino acids from the C-terminal region of human RRP7A.

Dilution

WB~~1:1000

Format

Purified polyclonal antibody supplied in PBS with 0.09% (W/V) sodium azide. This antibody is purified through a protein A column, followed by peptide affinity purification.

Storage

Maintain refrigerated at 2-8°C for up to 2 weeks. For long term storage store at -20°C in small aliquots to prevent freeze-thaw cycles.

Precautions

RRP7A Antibody (C-term) is for research use only and not for use in diagnostic or therapeutic procedures.

RRP7A Antibody (C-term) - Protein Information**Name** RRP7A ([HGNC:24286](#))**Function** Nucleolar protein that is involved in ribosomal RNA (rRNA) processing

(PubMed:[33199730](#)). Also plays a role in primary cilia resorption, and cell cycle progression in neurogenesis and neocortex development (PubMed:[33199730](#)). Part of the small subunit (SSU) processome, first precursor of the small eukaryotic ribosomal subunit. During the assembly of the SSU processome in the nucleolus, many ribosome biogenesis factors, an RNA chaperone and ribosomal proteins associate with the nascent pre-rRNA and work in concert to generate RNA folding, modifications, rearrangements and cleavage as well as targeted degradation of pre-ribosomal RNA by the RNA exosome (PubMed:[34516797](#)).

Cellular Location

Nucleus, nucleolus. Cell projection, cilium. Cytoplasm, cytoskeleton, microtubule organizing center, centrosome

Tissue Location

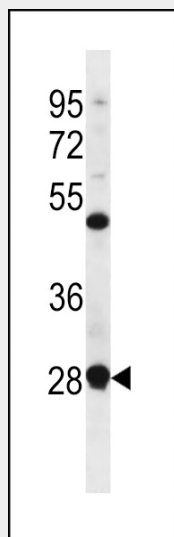
Expressed in the apical radial glial cells in the developing brain.

RRP7A Antibody (C-term) - Protocols

Provided below are standard protocols that you may find useful for product applications.

- [Western Blot](#)
- [Blocking Peptides](#)
- [Dot Blot](#)
- [Immunohistochemistry](#)
- [Immunofluorescence](#)
- [Immunoprecipitation](#)
- [Flow Cytometry](#)
- [Cell Culture](#)

RRP7A Antibody (C-term) - Images



RRP7A Antibody (C-term) (Cat. #AP12998b) western blot analysis in CEM cell line lysates (35ug/lane). This demonstrates the RRP7A antibody detected the RRP7A protein (arrow).

RRP7A Antibody (C-term) - References

Line, A., et al. Br. J. Cancer 86(11):1824-1830(2002)