

**BCL2A1 (A1) Antibody (BH3 Domain Specific)**  
**Purified Rabbit Polyclonal Antibody (Pab)**  
**Catalog # AP1300a****Specification**

---

**BCL2A1 (A1) Antibody (BH3 Domain Specific) - Product Information**

Application	WB, IHC-P,E
Primary Accession	<a href="#">Q16548</a>
Reactivity	Human
Host	Rabbit
Clonality	Polyclonal
Isotype	Rabbit IgG
Antigen Region	30-65

**BCL2A1 (A1) Antibody (BH3 Domain Specific) - Additional Information****Gene ID** 597**Other Names**

Bcl-2-related protein A1, Bcl-2-like protein 5, Bcl2-L-5, Hemopoietic-specific early response protein, Protein BFL-1, Protein GRS, BCL2A1, BCL2L5, BFL1, GRS, HBPA1

**Target/Specificity**

This BCL2A1 (A1) antibody is generated from rabbits immunized with a KLH conjugated synthetic peptide between 30-65 amino acids from human BCL2A1 (A1).

**Dilution**

WB~~1:1000  
IHC-P~~1:50~100

**Format**

Purified polyclonal antibody supplied in PBS with 0.09% (W/V) sodium azide. This antibody is prepared by Saturated Ammonium Sulfate (SAS) precipitation followed by dialysis against PBS.

**Storage**

Maintain refrigerated at 2-8°C for up to 2 weeks. For long term storage store at -20°C in small aliquots to prevent freeze-thaw cycles.

**Precautions**

BCL2A1 (A1) Antibody (BH3 Domain Specific) is for research use only and not for use in diagnostic or therapeutic procedures.

**BCL2A1 (A1) Antibody (BH3 Domain Specific) - Protein Information****Name** BCL2A1**Synonyms** BCL2L5, BFL1, GRS, HBPA1

**Function** Retards apoptosis induced by IL-3 deprivation. May function in the response of hemopoietic cells to external signals and in maintaining endothelial survival during infection (By similarity). Can inhibit apoptosis induced by serum starvation in the mammary epithelial cell line HC11 (By similarity).

**Cellular Location**

Cytoplasm.

**Tissue Location**

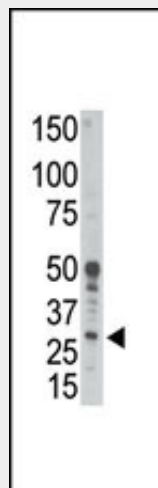
Seems to be restricted to the hematopoietic compartment. Expressed in peripheral blood, spleen, and bone marrow, at moderate levels in lung, small intestine and testis, at a minimal levels in other tissues. Also found in vascular smooth muscle cells and hematopoietic malignancies

**BCL2A1 (A1) Antibody (BH3 Domain Specific) - Protocols**

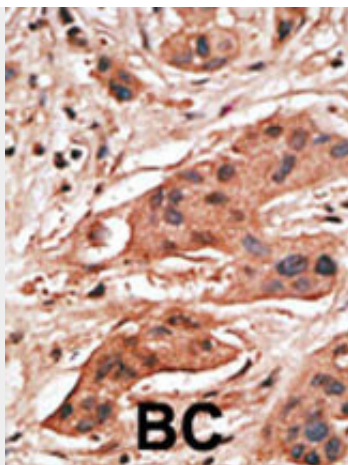
Provided below are standard protocols that you may find useful for product applications.

- [Western Blot](#)
- [Blocking Peptides](#)
- [Dot Blot](#)
- [Immunohistochemistry](#)
- [Immunofluorescence](#)
- [Immunoprecipitation](#)
- [Flow Cytometry](#)
- [Cell Culture](#)

**BCL2A1 (A1) Antibody (BH3 Domain Specific) - Images**



Western blot analysis of anti-Bcl2-related Protein A1 Pab (Cat. #AP1300a) in human placenta tissue lysate. Bcl2-related Protein A1 (arrow) was detected using purified Pab. Secondary HRP-anti-rabbit was used for signal visualization with chemiluminescence.



Formalin-fixed and paraffin-embedded human cancer tissue reacted with the primary antibody, which was peroxidase-conjugated to the secondary antibody, followed by DAB staining. This data demonstrates the use of this antibody for immunohistochemistry; clinical relevance has not been evaluated. BC = breast carcinoma; HC = hepatocarcinoma.

#### **BCL2A1 (A1) Antibody (BH3 Domain Specific) - Background**

Bcl-2 related Protein A1 is a member of the BCL-2 protein family. The proteins of this family form hetero- or homodimers and act as anti- and pro-apoptotic regulators that are involved in a wide variety of cellular activities such as embryonic development, homeostasis and tumorigenesis. The protein encoded by this gene is able to reduce the release of pro-apoptotic cytochrome c from mitochondria and block caspase activation. This gene is a direct transcription target of NF-kappa B in response to inflammatory mediators, and has been shown to be up-regulated by different extracellular signals, such as granulocyte-macrophage colony-stimulating factor (GM-CSF), CD40, phorbol ester and inflammatory cytokine TNF and IL-1, which suggests a cytoprotective function that is essential for lymphocyte activation as well as cell survival.

#### **BCL2A1 (A1) Antibody (BH3 Domain Specific) - References**

Akatsuka, Y., et al., J. Exp. Med. 197(11):1489-1500 (2003).  
Edelstein, L.C., et al., Mol. Cell. Biol. 23(8):2749-2761 (2003).  
Werner, A.B., et al., J. Biol. Chem. 277(25):22781-22788 (2002).  
Akari, H., et al., J. Exp. Med. 194(9):1299-1311 (2001).  
Harrington, J.J., et al., Nat. Biotechnol. 19(5):440-445 (2001).

#### **BCL2A1 (A1) Antibody (BH3 Domain Specific) - Citations**

- [Gene expression changes and signaling events associated with the direct antimelanoma effect of IFN-gamma.](#)