

**CTPS2 Antibody (C-term)**  
**Affinity Purified Rabbit Polyclonal Antibody (Pab)**  
**Catalog # AP13030b****Specification**

---

**CTPS2 Antibody (C-term) - Product Information**

Application	WB,E
Primary Accession	<a href="#">Q9NRF8</a>
Other Accession	<a href="#">Q1RMS2</a> , <a href="#">NP_787055.1</a> , <a href="#">NP_062831.3</a>
Reactivity	Human
Predicted	Bovine
Host	Rabbit
Clonality	Polyclonal
Isotype	Rabbit IgG
Calculated MW	65678
Antigen Region	450-479

**CTPS2 Antibody (C-term) - Additional Information****Gene ID** 56474**Other Names**

CTP synthase 2, CTP synthetase 2, UTP--ammonia ligase 2, CTPS2

**Target/Specificity**

This CTPS2 antibody is generated from rabbits immunized with a KLH conjugated synthetic peptide between 450-479 amino acids from the C-terminal region of human CTPS2.

**Dilution**

WB~~1:1000

**Format**

Purified polyclonal antibody supplied in PBS with 0.09% (W/V) sodium azide. This antibody is purified through a protein A column, followed by peptide affinity purification.

**Storage**

Maintain refrigerated at 2-8°C for up to 2 weeks. For long term storage store at -20°C in small aliquots to prevent freeze-thaw cycles.

**Precautions**

CTPS2 Antibody (C-term) is for research use only and not for use in diagnostic or therapeutic procedures.

**CTPS2 Antibody (C-term) - Protein Information****Name** CTPS2**Function** Catalyzes the ATP-dependent amination of UTP to CTP with either L-glutamine or

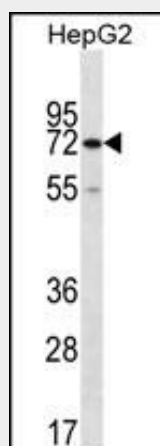
ammonia as the source of nitrogen. Constitutes the rate-limiting enzyme in the synthesis of cytosine nucleotides.

### CTPS2 Antibody (C-term) - Protocols

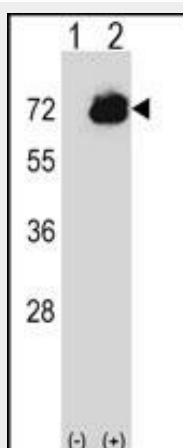
Provided below are standard protocols that you may find useful for product applications.

- [Western Blot](#)
- [Blocking Peptides](#)
- [Dot Blot](#)
- [Immunohistochemistry](#)
- [Immunofluorescence](#)
- [Immunoprecipitation](#)
- [Flow Cytometry](#)
- [Cell Culture](#)

### CTPS2 Antibody (C-term) - Images



CTPS2 Antibody (C-term) (Cat. #AP13030b) western blot analysis in HepG2 cell line lysates (35ug/lane). This demonstrates the CTPS2 antibody detected the CTPS2 protein (arrow).



Western blot analysis of CTPS2 (arrow) using rabbit polyclonal CTPS2 Antibody (C-term) (Cat. #AP13030b). 293 cell lysates (2 ug/lane) either nontransfected (Lane 1) or transiently transfected (Lane 2) with the CTPS2 gene.

### CTPS2 Antibody (C-term) - Background

The protein encoded by this gene catalyzes the formation of CTP from UTP with the concomitant deamination of glutamine to glutamate. This protein is the rate-limiting enzyme in the synthesis of cytosine nucleotides, which play an important role in various metabolic processes and provide the precursors necessary for the synthesis of RNA and DNA. Cancer cells that exhibit increased cell proliferation also exhibit an increased activity of this encoded protein. Thus, this protein is an attractive target for selective chemotherapy. Three alternatively spliced transcript variants encoding the same protein have been described for this gene.

#### **CTPS2 Antibody (C-term) - References**

Kassel, K.M., et al. J. Biol. Chem. 285(44):33727-33736(2010)  
Olsen, J.V., et al. Cell 127(3):635-648(2006)  
Han, G.S., et al. J. Biol. Chem. 280(46):38328-38336(2005)  
Ross, M.T., et al. Nature 434(7031):325-337(2005)  
van Kuilenburg, A.B., et al. Biochim. Biophys. Acta 1492 (2-3), 548-552 (2000) :