

SUSD2 Antibody (C-term)
Affinity Purified Rabbit Polyclonal Antibody (Pab)
Catalog # AP13050B

Specification

SUSD2 Antibody (C-term) - Product Information

Application	WB, IHC-P,E
Primary Accession	O9UGT4
Other Accession	NP_062547.1
Reactivity	Human
Host	Rabbit
Clonality	Polyclonal
Isotype	Rabbit IgG
Calculated MW	90208
Antigen Region	716-745

SUSD2 Antibody (C-term) - Additional Information

Gene ID 56241

Other Names

Sushi domain-containing protein 2, SUSD2

Target/Specificity

This SUSD2 antibody is generated from rabbits immunized with a KLH conjugated synthetic peptide between 716-745 amino acids from the C-terminal region of human SUSD2.

Dilution

WB~~1:1000

IHC-P~~1:10~50

Format

Purified polyclonal antibody supplied in PBS with 0.09% (W/V) sodium azide. This antibody is purified through a protein A column, followed by peptide affinity purification.

Storage

Maintain refrigerated at 2-8°C for up to 2 weeks. For long term storage store at -20°C in small aliquots to prevent freeze-thaw cycles.

Precautions

SUSD2 Antibody (C-term) is for research use only and not for use in diagnostic or therapeutic procedures.

SUSD2 Antibody (C-term) - Protein Information

Name SUSD2

Function May be a cytokine receptor for GPR15LG. May be a tumor suppressor; together with

GPR15LG has a growth inhibitory effect on colon cancer cells which includes G1 cell cycle arrest (PubMed:[25351403](#)). May play a role in breast tumorigenesis (PubMed:[23131994](#)).

Cellular Location

Cell membrane; Single-pass type I membrane protein. Note=SUSD2 and LGALS1 co-localized in very specific, punctate regions along the cell membrane of breast cancer cells

Tissue Location

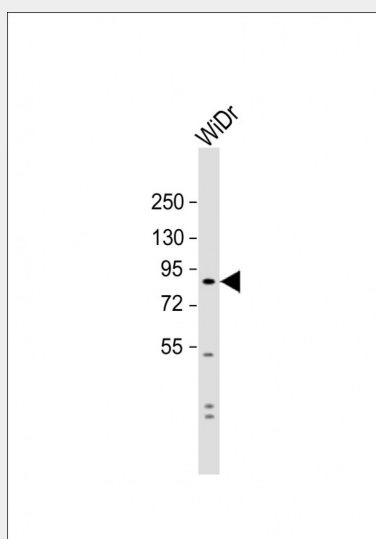
Highly expressed in breast cancer, but shows a restricted expression pattern in normal tissues such as adipose, adrenal gland, kidney, lung, mammary gland, placenta, thyroid, trachea, and uterus (PubMed:23131994). Also expressed in colon; down-regulated in colon cancer tissues (PubMed:25351403)

SUSD2 Antibody (C-term) - Protocols

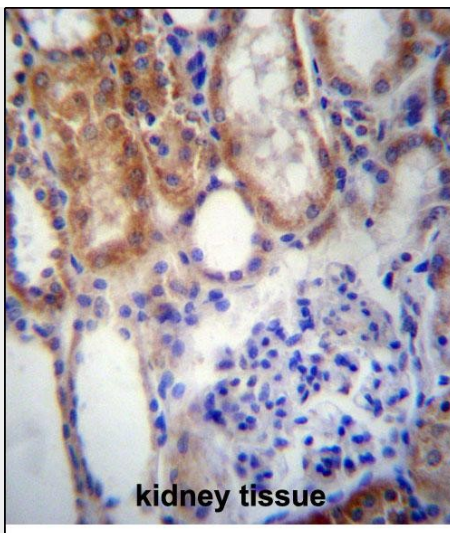
Provided below are standard protocols that you may find useful for product applications.

- [Western Blot](#)
- [Blocking Peptides](#)
- [Dot Blot](#)
- [Immunohistochemistry](#)
- [Immunofluorescence](#)
- [Immunoprecipitation](#)
- [Flow Cytometry](#)
- [Cell Culture](#)

SUSD2 Antibody (C-term) - Images



Anti-SUSD2 Antibody (C-term) at 1:1000 dilution + WiDr whole cell lysate Lysates/proteins at 20 µg per lane. Secondary Goat Anti-Rabbit IgG, (H+L), Peroxidase conjugated at 1/10000 dilution. Predicted band size : 90 kDa Blocking/Dilution buffer: 5% NFDM/TBST.



SUSD2 Antibody (C-term) (Cat. #AP13050b) immunohistochemistry analysis in formalin fixed and paraffin embedded human kidney tissue followed by peroxidase conjugation of the secondary antibody and DAB staining. This data demonstrates the use of SUSD2 Antibody (C-term) for immunohistochemistry. Clinical relevance has not been evaluated.

SUSD2 Antibody (C-term) - References

Ewing, R.M., et al. Mol. Syst. Biol. 3, 89 (2007) :
Liu, T., et al. J. Proteome Res. 4(6):2070-2080(2005)
Dunham, I., et al. Nature 402(6761):489-495(1999)