

**GNLY Antibody (N-term)**  
**Affinity Purified Rabbit Polyclonal Antibody (Pab)**  
**Catalog # AP13075a****Specification**

---

**GNLY Antibody (N-term) - Product Information**

Application	WB,E
Primary Accession	<a href="#">P22749</a>
Other Accession	<a href="#">NP_006424.2</a> , <a href="#">NP_036615.2</a>
Reactivity	Human
Host	Rabbit
Clonality	Polyclonal
Isotype	Rabbit IgG
Calculated MW	16374
Antigen Region	14-42

**GNLY Antibody (N-term) - Additional Information****Gene ID** 10578**Other Names**

Granulysin, Lymphokine LAG-2, Protein NKG5, T-cell activation protein 519, GNLY, LAG2, NKG5, TLA519

**Target/Specificity**

This GNLY antibody is generated from rabbits immunized with a KLH conjugated synthetic peptide between 14-42 amino acids from the N-terminal region of human GNLY.

**Dilution**

WB~~1:1000

**Format**

Purified polyclonal antibody supplied in PBS with 0.09% (W/V) sodium azide. This antibody is purified through a protein A column, followed by peptide affinity purification.

**Storage**

Maintain refrigerated at 2-8°C for up to 2 weeks. For long term storage store at -20°C in small aliquots to prevent freeze-thaw cycles.

**Precautions**

GNLY Antibody (N-term) is for research use only and not for use in diagnostic or therapeutic procedures.

**GNLY Antibody (N-term) - Protein Information****Name** GNLY**Synonyms** LAG2, NKG5, TLA519

**Function** Antimicrobial protein that kills intracellular pathogens. Active against a broad range of microbes, including Gram-positive and Gram-negative bacteria, fungi, and parasites. Kills Mycobacterium tuberculosis.

**Cellular Location**

Secreted. Note=Located in the cytotoxic granules of T-cells, which are released upon antigen stimulation

**Tissue Location**

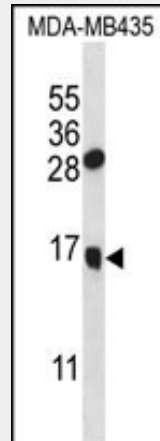
Expressed in natural killer and T-cells.

**GNLY Antibody (N-term) - Protocols**

Provided below are standard protocols that you may find useful for product applications.

- [Western Blot](#)
- [Blocking Peptides](#)
- [Dot Blot](#)
- [Immunohistochemistry](#)
- [Immunofluorescence](#)
- [Immunoprecipitation](#)
- [Flow Cytometry](#)
- [Cell Culture](#)

**GNLY Antibody (N-term) - Images**



GNLY Antibody (N-term) (Cat. #AP13075a) western blot analysis in MDA-MB435 cell line lysates (35ug/lane). This demonstrates the GNLY antibody detected the GNLY protein (arrow).

**GNLY Antibody (N-term) - Background**

The product of this gene is a member of the saposin-like protein (SAPLIP) family and is located in the cytotoxic granules of T cells, which are released upon antigen stimulation. This protein is present in cytotoxic granules of cytotoxic T lymphocytes and natural killer cells, and it has antimicrobial activity against M. tuberculosis and other organisms. Alternatively spliced transcript variants encoding different isoforms have been identified.

**GNLY Antibody (N-term) - References**

Xing, J., et al. J. Immunol. 185(9):5074-5081(2010)  
Schuurhof, A., et al. Pediatr. Pulmonol. 45(6):608-613(2010)  
Davila, S., et al. Genes Immun. 11(3):232-238(2010)  
Yang, C., et al. Int. J. Tuberc. Lung Dis. 13(11):1360-1366(2009)  
Hogg, A.E., et al. J. Leukoc. Biol. 86(5):1191-1203(2009)