

**Bmf BH3 Domain Antibody**  
**Purified Rabbit Polyclonal Antibody (Pab)**  
**Catalog # AP1309a****Specification**

---

**Bmf BH3 Domain Antibody - Product Information**

Application	WB, IHC-P,E
Primary Accession	<a href="#">O96LC9</a>
Other Accession	<a href="#">O91ZE9</a>
Reactivity	Human
Predicted	Mouse
Host	Rabbit
Clonality	Polyclonal
Isotype	Rabbit IgG
Antigen Region	115-150

**Bmf BH3 Domain Antibody - Additional Information****Gene ID** 90427**Other Names**

Bcl-2-modifying factor, BMF

**Target/Specificity**

This Bmf BH3 Domain antibody is generated from rabbits immunized with a KLH conjugated synthetic peptide between 115-150 amino acids from human Bmf BH3 Domain.

**Dilution**

WB~~1:1000

IHC-P~~1:50~100

**Format**

Purified polyclonal antibody supplied in PBS with 0.09% (W/V) sodium azide. This antibody is prepared by Saturated Ammonium Sulfate (SAS) precipitation followed by dialysis against PBS.

**Storage**

Maintain refrigerated at 2-8°C for up to 2 weeks. For long term storage store at -20°C in small aliquots to prevent freeze-thaw cycles.

**Precautions**

Bmf BH3 Domain Antibody is for research use only and not for use in diagnostic or therapeutic procedures.

**Bmf BH3 Domain Antibody - Protein Information****Name** BMF**Function** May play a role in apoptosis. Isoform 1 seems to be the main initiator.

### Tissue Location

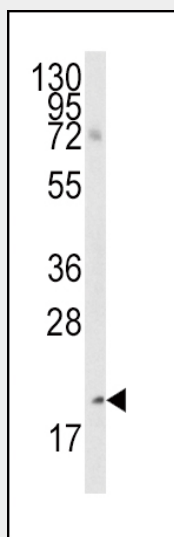
Isoform 1 is mainly expressed in B-lymphoid cells. Isoform 2 and isoform 3 are mainly expressed in B-CLL and normal B- cells.

### Bmf BH3 Domain Antibody - Protocols

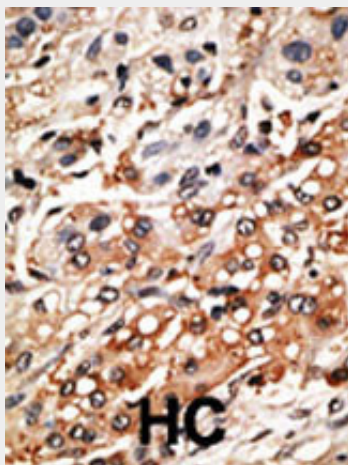
Provided below are standard protocols that you may find useful for product applications.

- [Western Blot](#)
- [Blocking Peptides](#)
- [Dot Blot](#)
- [Immunohistochemistry](#)
- [Immunofluorescence](#)
- [Immunoprecipitation](#)
- [Flow Cytometry](#)
- [Cell Culture](#)

### Bmf BH3 Domain Antibody - Images



Western blot analysis of anti-Bmf BH3 Domain Antibody (Cat.#AP1309a) in A2058 cell line lysates (35ug/lane). Bmf (arrow) was detected using the purified Pab.



Formalin-fixed and paraffin-embedded human cancer tissue reacted with the primary antibody, which was peroxidase-conjugated to the secondary antibody, followed by DAB staining. This data demonstrates the use of this antibody for immunohistochemistry; clinical relevance has not been evaluated. BC = breast carcinoma; HC = hepatocarcinoma.

#### **Bmf BH3 Domain Antibody - Background**

Bmf belongs to the BCL2 protein family. BCL2 family members form hetero- or homodimers and act as anti- or pro-apoptotic regulators that are involved in a wide variety of cellular activities. This protein contains a single BCL2 homology domain 3 (BH3), and has been shown to bind BCL2 proteins and function as an apoptotic activator. This protein is found to be sequestered to myosin V motors by its association with dynein light chain 2, which may be important for sensing intracellular damage and triggering apoptosis.

#### **Bmf BH3 Domain Antibody - References**

Puthalakath, H., et al., Science 293(5536):1829-1832 (2001).