

RASD1 Antibody (C-term)
Affinity Purified Rabbit Polyclonal Antibody (Pab)
Catalog # AP13102b**Specification**

RASD1 Antibody (C-term) - Product Information

Application	WB, IHC-P,E
Primary Accession	Q9Y272
Other Accession	NP_057168.1
Reactivity	Mouse
Host	Rabbit
Clonality	Polyclonal
Isotype	Rabbit IgG
Calculated MW	31642
Antigen Region	248-277

RASD1 Antibody (C-term) - Additional Information**Gene ID** 51655**Other Names**

Dexamethasone-induced Ras-related protein 1, Activator of G-protein signaling 1, RASD1, AGS1, DEXRAS1

Target/Specificity

This RASD1 antibody is generated from rabbits immunized with a KLH conjugated synthetic peptide between 248-277 amino acids from the C-terminal region of human RASD1.

Dilution

WB~~1:1000

IHC-P~~1:10~50

Format

Purified polyclonal antibody supplied in PBS with 0.09% (W/V) sodium azide. This antibody is purified through a protein A column, followed by peptide affinity purification.

Storage

Maintain refrigerated at 2-8°C for up to 2 weeks. For long term storage store at -20°C in small aliquots to prevent freeze-thaw cycles.

Precautions

RASD1 Antibody (C-term) is for research use only and not for use in diagnostic or therapeutic procedures.

RASD1 Antibody (C-term) - Protein Information**Name** RASD1

Synonyms AGS1, DEXRAS1

Function Small GTPase. Negatively regulates the transcription regulation activity of the APBB1/FE65-APP complex via its interaction with APBB1/FE65 (By similarity).

Cellular Location

Cell membrane; Lipid-anchor; Cytoplasmic side. Cytoplasm, perinuclear region. Nucleus

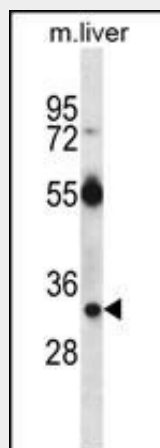
Tissue Location

Expressed in a variety of tissues including heart, cardiovascular tissues, brain, placenta, lung, liver, skeletal muscle, kidney, pancreas, gastrointestinal and reproductive tissues

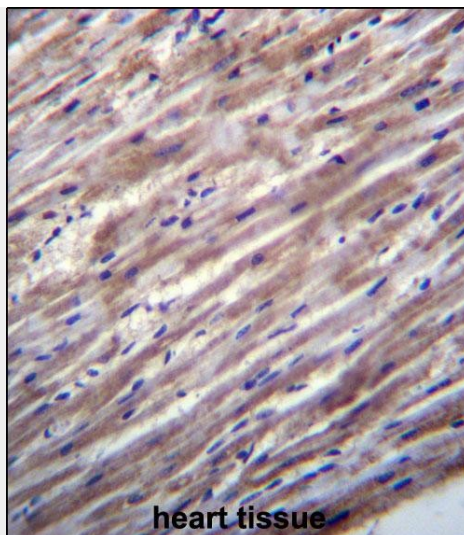
RASD1 Antibody (C-term) - Protocols

Provided below are standard protocols that you may find useful for product applications.

- [Western Blot](#)
- [Blocking Peptides](#)
- [Dot Blot](#)
- [Immunohistochemistry](#)
- [Immunofluorescence](#)
- [Immunoprecipitation](#)
- [Flow Cytometry](#)
- [Cell Culture](#)

RASD1 Antibody (C-term) - Images

RASD1 Antibody (C-term) (Cat. #AP13102b) western blot analysis in mouse liver tissue lysates (35ug/lane). This demonstrates the RASD1 antibody detected the RASD1 protein (arrow).



RASD1 Antibody (C-term) (Cat. #AP13102b) immunohistochemistry analysis in formalin fixed and paraffin embedded human heart tissue followed by peroxidase conjugation of the secondary antibody and DAB staining. This data demonstrates the use of RASD1 Antibody (C-term) for immunohistochemistry. Clinical relevance has not been evaluated.

RASD1 Antibody (C-term) - Background

This gene encodes a Ras-related protein that is stimulated by dexamethasone. The exact function of this gene is unknown, but it may play a role in dexamethasone-induced alterations in cell morphology, growth and cell-extracellular matrix interactions. In addition, studies of a similar rat protein suggest that it functions as a novel physiologic nitric oxide (NO) effector. The gene product belongs to the Ras superfamily of small GTPases.

RASD1 Antibody (C-term) - References

Nojima, M., et al. Clin. Cancer Res. 15(13):4356-4364(2009)
Lau, K.F., et al. J. Biol. Chem. 283(50):34728-34737(2008)
Attarzadeh-Yazdi, G., et al. Neurochem. Res. 33(4):609-613(2008)
Cheng, H.Y., et al. J. Neurosci. 26(50):12984-12995(2006)
Nguyen, C.H., et al. Mol. Pharmacol. 69(5):1763-1771(2006)