

LIMD1 Antibody (C-term)
Affinity Purified Rabbit Polyclonal Antibody (Pab)
Catalog # AP13132b**Specification**

LIMD1 Antibody (C-term) - Product Information

| | |
|-------------------|--|
| Application | WB, IHC-P,E |
| Primary Accession | Q9UGP4 |
| Other Accession | B5DEH0 , Q9QXD8 , G5E5X0 , NP_055055.1 |
| Reactivity | Mouse |
| Predicted | Bovine, Rat |
| Host | Rabbit |
| Clonality | Polyclonal |
| Isotype | Rabbit IgG |
| Calculated MW | 72190 |
| Antigen Region | 438-467 |

LIMD1 Antibody (C-term) - Additional Information**Gene ID** 8994**Other Names**

LIM domain-containing protein 1, LIMD1

Target/Specificity

This LIMD1 antibody is generated from rabbits immunized with a KLH conjugated synthetic peptide between 438-467 amino acids from the C-terminal region of human LIMD1.

Dilution

WB~~1:1000

IHC-P~~1:10~50

Format

Purified polyclonal antibody supplied in PBS with 0.09% (W/V) sodium azide. This antibody is purified through a protein A column, followed by peptide affinity purification.

Storage

Maintain refrigerated at 2-8°C for up to 2 weeks. For long term storage store at -20°C in small aliquots to prevent freeze-thaw cycles.

Precautions

LIMD1 Antibody (C-term) is for research use only and not for use in diagnostic or therapeutic procedures.

LIMD1 Antibody (C-term) - Protein Information**Name** LIMD1

Function Adapter or scaffold protein which participates in the assembly of numerous protein complexes and is involved in several cellular processes such as cell fate determination, cytoskeletal organization, repression of gene transcription, cell-cell adhesion, cell differentiation, proliferation and migration. Positively regulates microRNA (miRNA)-mediated gene silencing and is essential for P-body formation and integrity. Acts as a hypoxic regulator by bridging an association between the prolyl hydroxylases and VHL enabling efficient degradation of HIF1A. Acts as a transcriptional corepressor for SNAI1- and SNAI2/SLUG-dependent repression of E-cadherin transcription. Negatively regulates the Hippo signaling pathway and antagonizes phosphorylation of YAP1. Inhibits E2F-mediated transcription, and suppresses the expression of the majority of genes with E2F1-responsive elements. Regulates osteoblast development, function, differentiation and stress osteoclastogenesis. Enhances the ability of TRAF6 to activate adapter protein complex 1 (AP-1) and negatively regulates the canonical Wnt receptor signaling pathway in osteoblasts. May act as a tumor suppressor by inhibiting cell proliferation.

Cellular Location

Cytoplasm. Nucleus. Cytoplasm, P-body. Cell junction, adherens junction. Cell junction, focal adhesion Note=Shuttles between cytoplasm and nucleus but is localized predominantly to the cytoplasm. Found in the nucleus but not nucleoli Colocalizes with VCL in the focal adhesions. Down-regulation and/or elimination of its expression from the nucleus of neoplastic cells correlates strongly with poor patient prognosis and aggressive forms of breast carcinoma. Conversely, strong nuclear localization correlates with low-tumor grade and better patient prognosis

Tissue Location

Expressed in normal and breast cancer tissues (at protein level). Ubiquitous.

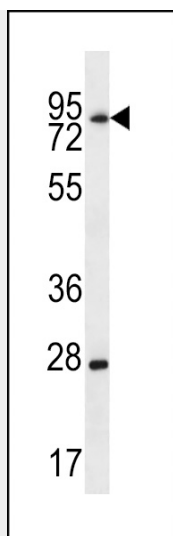
LIMD1 Antibody (C-term) - Protocols

Provided below are standard protocols that you may find useful for product applications.

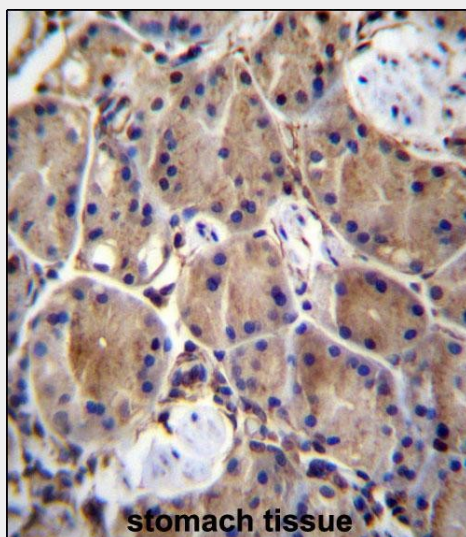
- [Western Blot](#)
- [Blocking Peptides](#)
- [Dot Blot](#)
- [Immunohistochemistry](#)
- [Immunofluorescence](#)
- [Immunoprecipitation](#)
- [Flow Cytometry](#)
- [Cell Culture](#)

LIMD1 Antibody (C-term) - Images





LIMD1 Antibody (C-term) (Cat. #AP13132b) western blot analysis in mouse brain tissue lysates (35ug/lane). This demonstrates the LIMD1 antibody detected the LIMD1 protein (arrow).



LIMD1 Antibody (C-term) (Cat. #AP13132b) immunohistochemistry analysis in formalin fixed and paraffin embedded human stomach tissue followed by peroxidase conjugation of the secondary antibody and DAB staining. This data demonstrates the use of LIMD1 Antibody (C-term) for immunohistochemistry. Clinical relevance has not been evaluated.

LIMD1 Antibody (C-term) - Background

LIMD1 is a transcriptional regulator that inhibits E2F-mediated transcription, and suppresses the expression of the majority of genes with E2F1-responsive elements. May act as a tumor suppressor by inhibiting cell proliferation.

LIMD1 Antibody (C-term) - References

- Ghosh, S., et al. Mol. Cancer 9, 58 (2010) :
- Sharp, T.V., et al. Proc. Natl. Acad. Sci. U.S.A. 105(50):19932-19937(2008)
- Spendlove, I., et al. Int. J. Cancer 123(10):2247-2253(2008)
- Huggins, C.J., et al. Cancer Lett. 267(1):55-66(2008)
- Huggins, C.J., et al. Cancer Genet. Cytogenet. 178(1):36-41(2007)