

**GGT7 Antibody (N-term)**  
**Affinity Purified Rabbit Polyclonal Antibody (Pab)**  
**Catalog # AP13155a**

**Specification**

---

**GGT7 Antibody (N-term) - Product Information**

Application	WB, IHC-P,E
Primary Accession	<a href="#">O9UJ14</a>
Other Accession	<a href="#">O99MZ4</a> , <a href="#">O99JP7</a> , <a href="#">NP_821158.2</a>
Reactivity	Human
Predicted	Mouse, Rat
Host	Rabbit
Clonality	Polyclonal
Isotype	Rabbit IgG
Calculated MW	70467
Antigen Region	24-53

**GGT7 Antibody (N-term) - Additional Information**

**Gene ID** 2686

**Other Names**

Gamma-glutamyltransferase 7, GGT 7, Gamma-glutamyltransferase-like 3, Gamma-glutamyltransferase-like 5, Gamma-glutamyltranspeptidase 7, Glutathione hydrolase 7, Gamma-glutamyltransferase 7 heavy chain, Gamma-glutamyltransferase 7 light chain, GGT7, GGTL3, GGTL5

**Target/Specificity**

This GGT7 antibody is generated from rabbits immunized with a KLH conjugated synthetic peptide between 24-53 amino acids from the N-terminal region of human GGT7.

**Dilution**

WB~~1:1000  
IHC-P~~1:10~50

**Format**

Purified polyclonal antibody supplied in PBS with 0.09% (W/V) sodium azide. This antibody is purified through a protein A column, followed by peptide affinity purification.

**Storage**

Maintain refrigerated at 2-8°C for up to 2 weeks. For long term storage store at -20°C in small aliquots to prevent freeze-thaw cycles.

**Precautions**

GGT7 Antibody (N-term) is for research use only and not for use in diagnostic or therapeutic procedures.

**GGT7 Antibody (N-term) - Protein Information**

**Name** GGT7 ([HGNC:4259](#))

**Synonyms** GGTL3, GGTL5

**Function** Hydrolyzes and transfers gamma-glutamyl moieties from glutathione and other gamma-glutamyl compounds to acceptors.

**Cellular Location**

Membrane {ECO:0000250|UniProtKB:P19440}; Single- pass type II membrane protein {ECO:0000250|UniProtKB:P07314}

**Tissue Location**

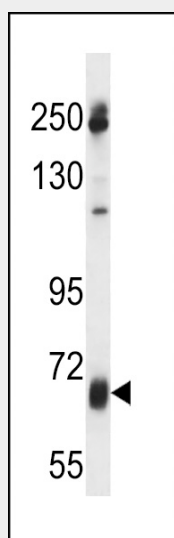
Widely expressed, but at low level, except in the airway epithelial cells. Detected in brain, heart, kidney, liver, lung, spleen, testis and trachea

**GGT7 Antibody (N-term) - Protocols**

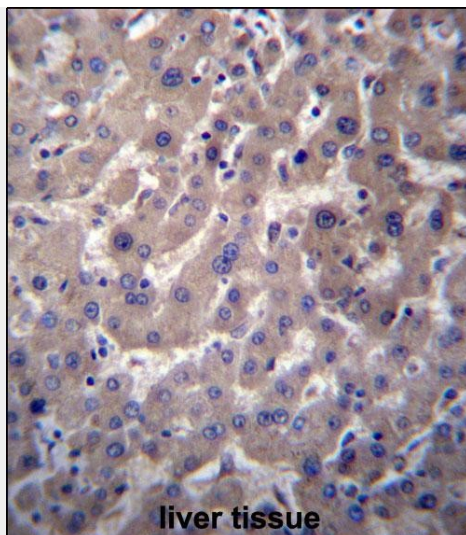
Provided below are standard protocols that you may find useful for product applications.

- [Western Blot](#)
- [Blocking Peptides](#)
- [Dot Blot](#)
- [Immunohistochemistry](#)
- [Immunofluorescence](#)
- [Immunoprecipitation](#)
- [Flow Cytometry](#)
- [Cell Culture](#)

**GGT7 Antibody (N-term) - Images**



GGT7 Antibody (N-term) (Cat. #AP13155a) western blot analysis in uterus tumor cell line lysates (35ug/lane). This demonstrates the GGT7 antibody detected the GGT7 protein (arrow).



GGT7 Antibody (N-term) (Cat. #AP13155a) immunohistochemistry analysis in formalin fixed and paraffin embedded human liver tissue followed by peroxidase conjugation of the secondary antibody and DAB staining. This data demonstrates the use of GGT7 Antibody (N-term) for immunohistochemistry. Clinical relevance has not been evaluated.

#### **GGT7 Antibody (N-term) - Background**

This gene is a member of a gene family that encodes enzymes involved in both the metabolism of glutathione and in the transpeptidation of amino acids. Changes in the activity of gamma-glutamyltransferase may signal preneoplastic or toxic conditions in the liver or kidney. The protein encoded by this gene consists of a heavy and a light chain, and it can interact with CT120, a plasma membrane-associated protein that is possibly involved in lung carcinogenesis.

#### **GGT7 Antibody (N-term) - References**

Rose, J. Phd, et al. Mol. Med. (2010) In press :  
Heisterkamp, N., et al. Hum. Genet. 123(4):321-332(2008)  
He, X., et al. Biochem. Biophys. Res. Commun. 297(3):528-536(2002)  
Figlewicz, D.A., et al. Genomics 17(2):299-305(1993)