

**CAPN8 Antibody (Center)**  
**Affinity Purified Rabbit Polyclonal Antibody (Pab)**  
**Catalog # AP13161c****Specification**

---

**CAPN8 Antibody (Center) - Product Information**

Application	WB, IHC-P,E
Primary Accession	<a href="#">A6NHC0</a>
Other Accession	<a href="#">NP_001137434.1</a>
Reactivity	Human
Host	Rabbit
Clonality	Polyclonal
Isotype	Rabbit IgG
Calculated MW	79144
Antigen Region	290-318

**CAPN8 Antibody (Center) - Additional Information****Gene ID** 388743**Other Names**

Calpain-8, New calpain 2, nCL-2, Stomach-specific M-type calpain, CAPN8, NCL2

**Target/Specificity**

This CAPN8 antibody is generated from rabbits immunized with a KLH conjugated synthetic peptide between 290-318 amino acids from the Central region of human CAPN8.

**Dilution**

WB~~1:1000

IHC-P~~1:10~50

**Format**

Purified polyclonal antibody supplied in PBS with 0.09% (W/V) sodium azide. This antibody is purified through a protein A column, followed by peptide affinity purification.

**Storage**

Maintain refrigerated at 2-8°C for up to 2 weeks. For long term storage store at -20°C in small aliquots to prevent freeze-thaw cycles.

**Precautions**

CAPN8 Antibody (Center) is for research use only and not for use in diagnostic or therapeutic procedures.

**CAPN8 Antibody (Center) - Protein Information****Name** CAPN8**Synonyms** NCL2

**Function** Calcium-regulated non-lysosomal thiol-protease. Involved in membrane trafficking in the gastric surface mucus cells (pit cells) and may involve the membrane trafficking of mucus cells via interactions with coat protein. Proteolytically cleaves the beta-subunit of coatomer complex (By similarity).

**Cellular Location**

Cytoplasm. Golgi apparatus

**Tissue Location**

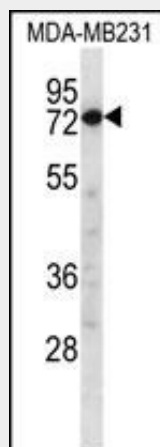
Stomach.

**CAPN8 Antibody (Center) - Protocols**

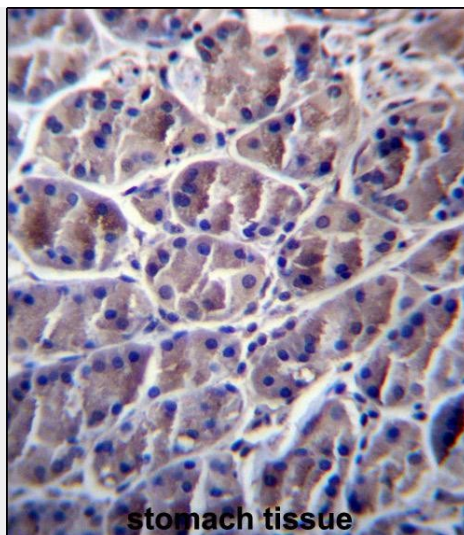
Provided below are standard protocols that you may find useful for product applications.

- [Western Blot](#)
- [Blocking Peptides](#)
- [Dot Blot](#)
- [Immunohistochemistry](#)
- [Immunofluorescence](#)
- [Immunoprecipitation](#)
- [Flow Cytometry](#)
- [Cell Culture](#)

**CAPN8 Antibody (Center) - Images**



CAPN8 Antibody (Center) (Cat. #AP13161c) western blot analysis in MDA-MB231 cell line lysates (35ug/lane). This demonstrates the CAPN8 antibody detected the CAPN8 protein (arrow).



CAPN8 Antibody (Center) (Cat. #AP13161c) immunohistochemistry analysis in formalin fixed and paraffin embedded human stomach tissue followed by peroxidase conjugation of the secondary antibody and DAB staining. This data demonstrates the use of CAPN8 Antibody (Center) for immunohistochemistry. Clinical relevance has not been evaluated.

#### **CAPN8 Antibody (Center) - Background**

Calcium-regulated non-lysosomal thiol-protease. Involved in membrane trafficking in the gastric surface mucus cells (pit cells) and may involve the membrane trafficking of mucus cells via interactions with coat protein. Proteolytically cleaves the beta-subunit of coatamer complex (By similarity).

#### **CAPN8 Antibody (Center) - References**

Hata, S., et al. J. Biol. Chem. 282(38):27847-27856(2007)  
Oh, J.H., et al. Mamm. Genome 16(12):942-954(2005)  
Hata, S., et al. J. Mol. Evol. 53(3):191-203(2001)  
Huang, Y., et al. Trends Mol Med 7(8):355-362(2001)  
Harrington, J.J., et al. Nat. Biotechnol. 19(5):440-445(2001)