

CX001 Antibody (C-term)
Affinity Purified Rabbit Polyclonal Antibody (Pab)
Catalog # AP13165b**Specification**

CX001 Antibody (C-term) - Product Information

Application	WB,E
Primary Accession	O96002
Other Accession	NP_004700.1
Reactivity	Human
Host	Rabbit
Clonality	Polyclonal
Isotype	Rabbit IgG
Calculated MW	13452
Antigen Region	62-90

CX001 Antibody (C-term) - Additional Information**Other Names**

Transmembrane protein 257, TMEM257, CXorf1

Target/Specificity

This CX001 antibody is generated from rabbits immunized with a KLH conjugated synthetic peptide between 62-90 amino acids from the C-terminal region of human CX001.

Dilution

WB~~1:1000

Format

Purified polyclonal antibody supplied in PBS with 0.09% (W/V) sodium azide. This antibody is purified through a protein A column, followed by peptide affinity purification.

Storage

Maintain refrigerated at 2-8°C for up to 2 weeks. For long term storage store at -20°C in small aliquots to prevent freeze-thaw cycles.

Precautions

CX001 Antibody (C-term) is for research use only and not for use in diagnostic or therapeutic procedures.

CX001 Antibody (C-term) - Protein Information

Name CXorf1 {ECO:0000303|PubMed:9881668}

Cellular Location

Membrane; Multi-pass membrane protein

Tissue Location

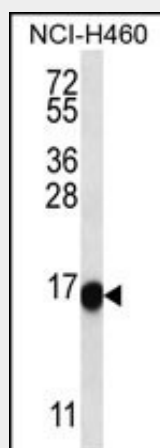
Brain. In the hippocampus it is mainly localized in the granular-cell layer of the dentate gyrus and in the CA2-CA3 subfields of Ammon's horn.

CX001 Antibody (C-term) - Protocols

Provided below are standard protocols that you may find useful for product applications.

- [Western Blot](#)
- [Blocking Peptides](#)
- [Dot Blot](#)
- [Immunohistochemistry](#)
- [Immunofluorescence](#)
- [Immunoprecipitation](#)
- [Flow Cytometry](#)
- [Cell Culture](#)

CX001 Antibody (C-term) - Images



CX001 Antibody (C-term) (Cat. #AP13165b) western blot analysis in NCI-H460 cell line lysates (35ug/lane). This demonstrates the CX001 antibody detected the CX001 protein (arrow).

CX001 Antibody (C-term) - Background

This intronless gene is expressed in the hippocampus and maps close to a candidate region for several X-linked mental retardation (XLMR) syndromes. It is conserved in primates, cow, and horse, but not found in mouse and rat. The exact function of this gene is not known, but on the basis of its physical location and expression pattern, it is proposed to have an important function in the brain.

CX001 Antibody (C-term) - References

Ross, M.T., et al. Nature 434(7031):325-337(2005)
Redolfi, E., et al. DNA Cell Biol. 17(12):1009-1016(1998)