

ABCC12 Antibody (Center)
Affinity Purified Rabbit Polyclonal Antibody (Pab)
Catalog # AP13196C**Specification**

ABCC12 Antibody (Center) - Product Information

Application	WB, IHC-P,E
Primary Accession	O96J65
Other Accession	NP_150229.2
Reactivity	Mouse
Host	Rabbit
Clonality	Polyclonal
Isotype	Rabbit IgG
Calculated MW	152297
Antigen Region	723-752

ABCC12 Antibody (Center) - Additional Information**Gene ID** 94160**Other Names**

Multidrug resistance-associated protein 9, ATP-binding cassette sub-family C member 12, ABCC12, MRP9

Target/Specificity

This ABCC12 antibody is generated from rabbits immunized with a KLH conjugated synthetic peptide between 723-752 amino acids from the Central region of human ABCC12.

Dilution

WB~~1:2000

IHC-P~~1:10~50

Format

Purified polyclonal antibody supplied in PBS with 0.09% (W/V) sodium azide. This antibody is purified through a protein A column, followed by peptide affinity purification.

Storage

Maintain refrigerated at 2-8°C for up to 2 weeks. For long term storage store at -20°C in small aliquots to prevent freeze-thaw cycles.

Precautions

ABCC12 Antibody (Center) is for research use only and not for use in diagnostic or therapeutic procedures.

ABCC12 Antibody (Center) - Protein Information**Name** ABCC12

Synonyms MRP9

Function Probable transporter, its substrate specificity is unknown.

Cellular Location

Endoplasmic reticulum membrane; Multi-pass membrane protein
{ECO:0000255|PROSITE-ProRule:PRU00441}

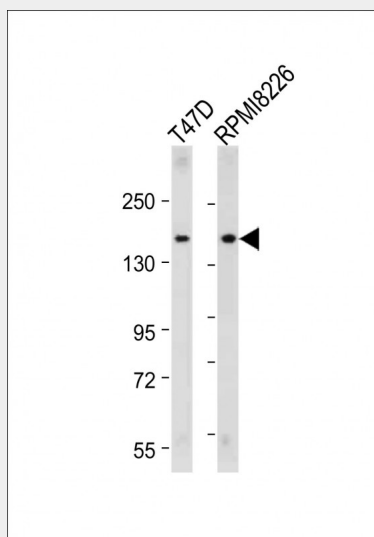
Tissue Location

Expressed in testis (at protein level). Widely expressed at low level (PubMed:11483364, PubMed:11688999, PubMed:12011458, PubMed:17472575). Isoform 5 is specifically expressed in brain, testis and breast cancer cells (PubMed:11483364, PubMed:11688999, PubMed:12011458).

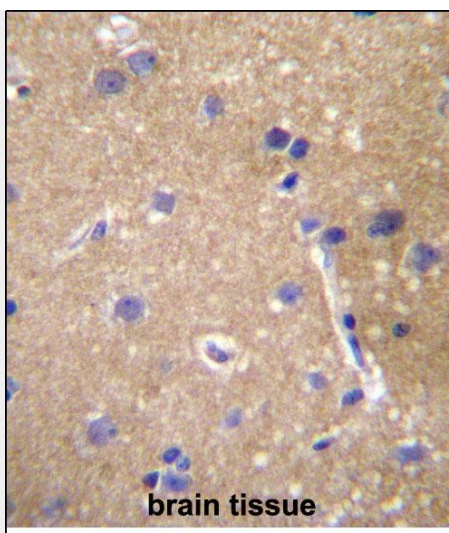
ABCC12 Antibody (Center) - Protocols

Provided below are standard protocols that you may find useful for product applications.

- [Western Blot](#)
- [Blocking Peptides](#)
- [Dot Blot](#)
- [Immunohistochemistry](#)
- [Immunofluorescence](#)
- [Immunoprecipitation](#)
- [Flow Cytometry](#)
- [Cell Culture](#)

ABCC12 Antibody (Center) - Images

All lanes : Anti-ABCC12 Antibody (Center) at 1:2000 dilution Lane 1: T47D whole cell lysate Lane 2: RPMI8226 whole cell lysate Lysates/proteins at 20 µg per lane. Secondary Goat Anti-Rabbit IgG, (H+L), Peroxidase conjugated at 1/10000 dilution. Predicted band size : 152 kDa Blocking/Dilution buffer: 5% NFDN/TBST.



ABCC12 Antibody (Center) (Cat. #AP13196c) immunohistochemistry analysis in formalin fixed and paraffin embedded human brain tissue followed by peroxidase conjugation of the secondary antibody and DAB staining. This data demonstrates the use of ABCC12 Antibody (Center) for immunohistochemistry. Clinical relevance has not been evaluated.

ABCC12 Antibody (Center) - Background

This gene is a member of the superfamily of ATP-binding cassette (ABC) transporters and the encoded protein contains two ATP-binding domains and 12 transmembrane regions. ABC proteins transport various molecules across extra- and intracellular membranes. ABC genes are divided into seven distinct subfamilies: ABC1, MDR/TAP, MRP, ALD, OABP, GCN20, and White. This gene is a member of the MRP subfamily which is involved in multi-drug resistance. This gene and another subfamily member are arranged head-to-tail on chromosome 16q12.1. Increased expression of this gene is associated with breast cancer.

ABCC12 Antibody (Center) - References

Rose, J.E., et al. Mol. Med. 16 (7-8), 247-253 (2010) :
Haimeur, A., et al. Curr. Drug Metab. 5(1):21-53(2004)
Bera, T.K., et al. Proc. Natl. Acad. Sci. U.S.A. 99(10):6997-7002(2002)
Yabuuchi, H., et al. Biochem. Biophys. Res. Commun. 288(4):933-939(2001)
Tammur, J., et al. Gene 273(1):89-96(2001)