

**TRA2A Antibody (Center)**  
**Affinity Purified Rabbit Polyclonal Antibody (Pab)**  
**Catalog # AP13223c****Specification**

---

**TRA2A Antibody (Center) - Product Information**

Application	WB,E
Primary Accession	<a href="#">Q13595</a>
Other Accession	<a href="#">Q6PFR5</a> , <a href="#">NP_037425.1</a>
Reactivity	Human
Predicted	Mouse
Host	Rabbit
Clonality	Polyclonal
Isotype	Rabbit IgG
Calculated MW	32689
Antigen Region	153-182

**TRA2A Antibody (Center) - Additional Information****Gene ID** 29896**Other Names**

Transformer-2 protein homolog alpha, TRA-2 alpha, TRA2-alpha, Transformer-2 protein homolog A, TRA2A

**Target/Specificity**

This TRA2A antibody is generated from rabbits immunized with a KLH conjugated synthetic peptide between 153-182 amino acids from the Central region of human TRA2A.

**Dilution**

WB~~1:1000

**Format**

Purified polyclonal antibody supplied in PBS with 0.09% (W/V) sodium azide. This antibody is purified through a protein A column, followed by peptide affinity purification.

**Storage**

Maintain refrigerated at 2-8°C for up to 2 weeks. For long term storage store at -20°C in small aliquots to prevent freeze-thaw cycles.

**Precautions**

TRA2A Antibody (Center) is for research use only and not for use in diagnostic or therapeutic procedures.

**TRA2A Antibody (Center) - Protein Information****Name** TRA2A ([HGNC:16645](#))

**Function** Sequence-specific RNA-binding protein which participates in the control of pre-mRNA splicing.

**Cellular Location**

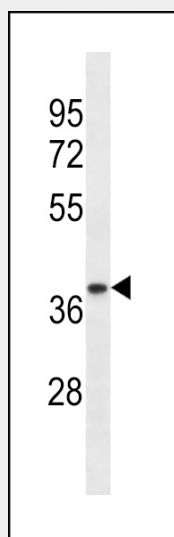
Nucleus.

**TRA2A Antibody (Center) - Protocols**

Provided below are standard protocols that you may find useful for product applications.

- [Western Blot](#)
- [Blocking Peptides](#)
- [Dot Blot](#)
- [Immunohistochemistry](#)
- [Immunofluorescence](#)
- [Immunoprecipitation](#)
- [Flow Cytometry](#)
- [Cell Culture](#)

**TRA2A Antibody (Center) - Images**



Western blot analysis of lysate from human ovary tissue lysate, using TRA2A Antibody (Center)(Cat. #AP13223c). AP13223c was diluted at 1:1000 at each lane. A goat anti-rabbit IgG H&L(HRP) at 1:5000 dilution was used as the secondary antibody. Lysate at 35ug per lane.

**TRA2A Antibody (Center) - Background**

This gene is a member of the transformer 2 homolog family and encodes a protein with two RS domains and an RRM (RNA recognition motif) domain. This phosphorylated nuclear protein binds to specific RNA sequences and plays a role in the regulation of pre-mRNA splicing. Several alternatively spliced transcript variants of this gene have been described; however, the full-length nature of some of these variants has not been determined. [provided by RefSeq].

**TRA2A Antibody (Center) - References**

Sugiyama, N., et al. Mol. Cell Proteomics 6(6):1103-1109(2007)  
Olsen, J.V., et al. Cell 127(3):635-648(2006)  
Olsen, J.V., et al. Cell 127(3):635-648(2006)  
Beausoleil, S.A., et al. Nat. Biotechnol. 24(10):1285-1292(2006)  
Gevaert, K., et al. Proteomics 5(14):3589-3599(2005)