

**FIBP Antibody (Center)**  
**Affinity Purified Rabbit Polyclonal Antibody (Pab)**  
**Catalog # AP13232c****Specification**

---

**FIBP Antibody (Center) - Product Information**

Application	WB,E
Primary Accession	<a href="#">O43427</a>
Other Accession	<a href="#">O9JI19</a> , <a href="#">NP_942600.1</a> , <a href="#">NP_004205.2</a>
Reactivity	Human
Predicted	Mouse
Host	Rabbit
Clonality	Polyclonal
Isotype	Rabbit IgG
Antigen Region	98-127

**FIBP Antibody (Center) - Additional Information****Gene ID** 9158**Other Names**

Acidic fibroblast growth factor intracellular-binding protein, aFGF intracellular-binding protein, FGF-1 intracellular-binding protein, FIBP

**Target/Specificity**

This FIBP antibody is generated from rabbits immunized with a KLH conjugated synthetic peptide between 98-127 amino acids from the Central region of human FIBP.

**Dilution**

WB~~1:1000

**Format**

Purified polyclonal antibody supplied in PBS with 0.09% (W/V) sodium azide. This antibody is purified through a protein A column, followed by peptide affinity purification.

**Storage**

Maintain refrigerated at 2-8°C for up to 2 weeks. For long term storage store at -20°C in small aliquots to prevent freeze-thaw cycles.

**Precautions**

FIBP Antibody (Center) is for research use only and not for use in diagnostic or therapeutic procedures.

**FIBP Antibody (Center) - Protein Information****Name** FIBP**Function** May be involved in mitogenic function of FGF1. May mediate with IER2 FGF-signaling in

the establishment of laterality in the embryo (By similarity).

#### **Cellular Location**

Nucleus. Endomembrane system; Peripheral membrane protein. Note=Also associated with cytoplasmic membranes, particularly of mitochondria

#### **Tissue Location**

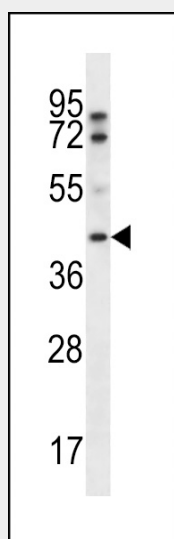
Highly expressed in heart, skeletal muscle and pancreas. Expressed at lower levels in brain. Also found in placenta, liver and kidney

### **FIBP Antibody (Center) - Protocols**

Provided below are standard protocols that you may find useful for product applications.

- [Western Blot](#)
- [Blocking Peptides](#)
- [Dot Blot](#)
- [Immunohistochemistry](#)
- [Immunofluorescence](#)
- [Immunoprecipitation](#)
- [Flow Cytometry](#)
- [Cell Culture](#)

### **FIBP Antibody (Center) - Images**



FIBP Antibody (Center) (Cat. #AP13232c) western blot analysis in A2058 cell line lysates (35ug/lane). This demonstrates the FIBP antibody detected the FIBP protein (arrow).

### **FIBP Antibody (Center) - Background**

Acidic fibroblast growth factor is mitogenic for a variety of different cell types and acts by stimulating mitogenesis or inducing morphological changes and differentiation. The FIBP protein is an intracellular protein that binds selectively to acidic fibroblast growth factor (aFGF). It is postulated that FIBP may be involved in the mitogenic action of aFGF. Two transcript variants encoding different isoforms have been found for this gene.

**FIBP Antibody (Center) - References**

Bailey, S.D., et al. Diabetes Care 33(10):2250-2253(2010)  
Talmud, P.J., et al. Am. J. Hum. Genet. 85(5):628-642(2009)  
Giatromanolaki, A., et al. Mediators Inflamm. 2007, 67187 (2007) :  
Ewing, R.M., et al. Mol. Syst. Biol. 3, 89 (2007) :  
Skjerpen, C.S., et al. EMBO J. 21(15):4058-4069(2002)

**FIBP Antibody (Center) - Citations**

- [Proteomic analysis of the human cyclin-dependent kinase family reveals a novel CDK5 complex involved in cell growth and migration.](#)