

**SLC16A10 Antibody (C-term)**  
**Affinity Purified Rabbit Polyclonal Antibody (Pab)**  
**Catalog # AP13235b**

**Specification**

---

**SLC16A10 Antibody (C-term) - Product Information**

Application	WB, IHC-P, FC,E
Primary Accession	<a href="#">Q8TF71</a>
Other Accession	<a href="#">NP_061063.2</a>
Reactivity	Human
Host	Rabbit
Clonality	Polyclonal
Isotype	Rabbit IgG
Antigen Region	301-329

**SLC16A10 Antibody (C-term) - Additional Information**

**Gene ID** 117247

**Other Names**

Monocarboxylate transporter 10, MCT 10, Aromatic amino acid transporter 1, Solute carrier family 16 member 10, T-type amino acid transporter 1, SLC16A10, MCT10, TAT1

**Target/Specificity**

This SLC16A10 antibody is generated from rabbits immunized with a KLH conjugated synthetic peptide between 301-329 amino acids from the C-terminal region of human SLC16A10.

**Dilution**

WB~~1:1000  
IHC-P~~1:10~50  
FC~~1:10~50

**Format**

Purified polyclonal antibody supplied in PBS with 0.09% (W/V) sodium azide. This antibody is purified through a protein A column, followed by peptide affinity purification.

**Storage**

Maintain refrigerated at 2-8°C for up to 2 weeks. For long term storage store at -20°C in small aliquots to prevent freeze-thaw cycles.

**Precautions**

SLC16A10 Antibody (C-term) is for research use only and not for use in diagnostic or therapeutic procedures.

**SLC16A10 Antibody (C-term) - Protein Information**

**Name** SLC16A10

**Synonyms** MCT10, TAT1 {ECO:0000303|PubMed:11827462}

**Function** Sodium- and proton-independent thyroid hormones and aromatic acids transporter (PubMed:[11827462](#), PubMed:[18337592](#), PubMed:[28754537](#)). Mediates both uptake and efflux of 3,5,3'-triiodothyronine (T3) and 3,5,3',5'-tetraiodothyronine (T4) with high affinity, suggesting a role in the homeostasis of thyroid hormone levels (PubMed:[18337592](#)). Responsible for low affinity bidirectional transport of the aromatic amino acids, such as phenylalanine, tyrosine, tryptophan and L-3,4- dihydroxyphenylalanine (L-dopa) (PubMed:[11827462](#), PubMed:[28754537](#)). Plays an important role in homeostasis of aromatic amino acids (By similarity).

#### Cellular Location

Cell membrane; Multi-pass membrane protein. Basolateral cell membrane {ECO:0000250|UniProtKB:Q91Y77}; Multi-pass membrane protein

#### Tissue Location

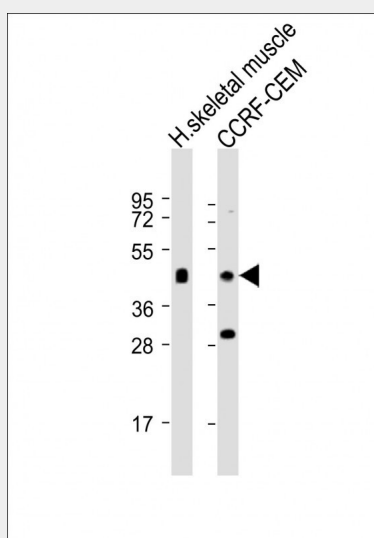
Strongly expressed in kidney and skeletal muscle and at lower level in placenta and heart

### SLC16A10 Antibody (C-term) - Protocols

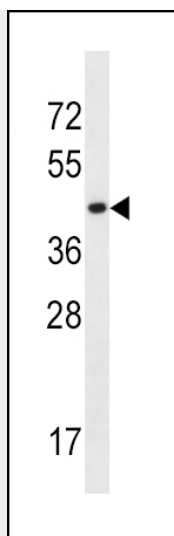
Provided below are standard protocols that you may find useful for product applications.

- [Western Blot](#)
- [Blocking Peptides](#)
- [Dot Blot](#)
- [Immunohistochemistry](#)
- [Immunofluorescence](#)
- [Immunoprecipitation](#)
- [Flow Cytometry](#)
- [Cell Culture](#)

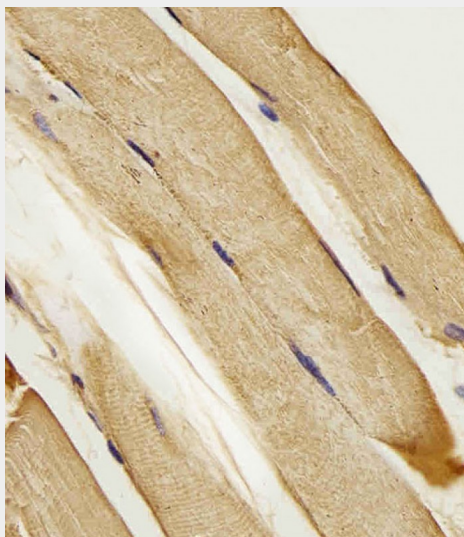
### SLC16A10 Antibody (C-term) - Images



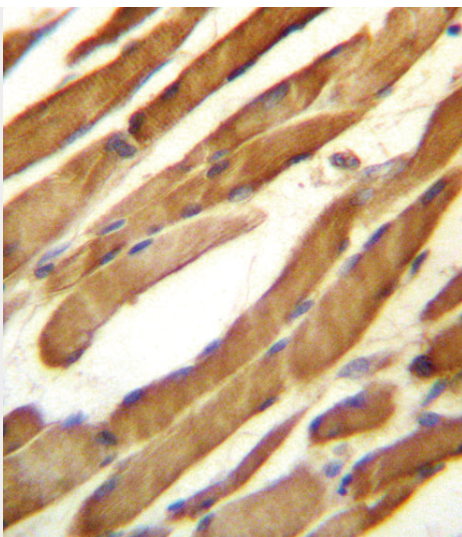
All lanes : Anti-SLC16A10 Antibody (C-term) at 1:2000 dilution Lane 1: human skeletal muscle lysates Lane 2: CCRF-CEM whole cell lysates Lysates/proteins at 20 µg per lane. Secondary Goat Anti-Rabbit IgG, (H+L), Peroxidase conjugated at 1/10000 dilution Predicted band size : 55 kDa Blocking/Dilution buffer: 5% NFDM/TBST.



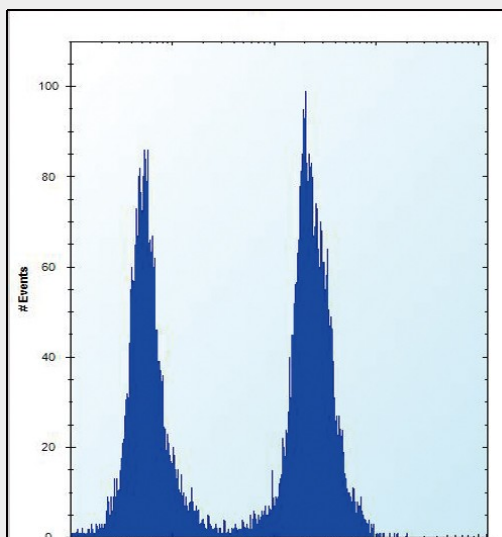
SLC16A10 Antibody (C-term) (Cat. #AP13235b) western blot analysis in K562 cell line lysates (35ug/lane). This demonstrates the SLC16A10 antibody detected the SLC16A10 protein (arrow).



AP13235b staining SLC16A10 in Human skeletal muscle tissue sections by Immunohistochemistry (IHC-P - paraformaldehyde-fixed, paraffin-embedded sections). Tissue was fixed with formaldehyde and blocked with 3% BSA for 0.5 hour at room temperature; antigen retrieval was by heat mediation with a citrate buffer (pH6). Samples were incubated with primary antibody (1/25) for 1 hour at 37°C. A undiluted biotinylated goat polyvalent antibody was used as the secondary antibody.



SLC16A10 Antibody (C-term) (Cat. #AP13235b) immunohistochemistry analysis in formalin fixed and paraffin embedded human skeletal muscle followed by peroxidase conjugation of the secondary antibody and DAB staining. This data demonstrates the use of SLC16A10 Antibody (C-term) for immunohistochemistry. Clinical relevance has not been evaluated.



SLC16A10 Antibody (C-term) (Cat. #AP13235b) flow cytometric analysis of K562 cells (right histogram) compared to a negative control (left histogram). FITC-conjugated donkey-anti-rabbit secondary antibodies were used for the analysis.

### **SLC16A10 Antibody (C-term) - Background**

SLC16A10 is a member of a family of plasma membrane amino acid transporters that mediate the Na(+)-independent transport of aromatic amino acids across the plasma membrane.

### **SLC16A10 Antibody (C-term) - References**

- Loubiere, L.S., et al. Placenta 31(4):295-304(2010)
- Friesema, E.C., et al. Mol. Endocrinol. 22(6):1357-1369(2008)
- Broer, S. Physiol. Rev. 88(1):249-286(2008)
- Park, S.Y., et al. Arch. Pharm. Res. 28(4):421-432(2005)
- Halestrap, A.P., et al. Pflugers Arch. 447(5):619-628(2004)