

PGAP3 Antibody (Center)
Affinity Purified Rabbit Polyclonal Antibody (Pab)
Catalog # AP13237c

Specification

PGAP3 Antibody (Center) - Product Information

Application	WB, IHC-P,E
Primary Accession	Q96FM1
Other Accession	A2A559 , A2V7M9 , A7YWP2 , NP_219487.3
Reactivity	Human
Predicted	Bovine, Hamster, Mouse
Host	Rabbit
Clonality	Polyclonal
Isotype	Rabbit IgG
Calculated MW	36475
Antigen Region	141-169

PGAP3 Antibody (Center) - Additional Information

Gene ID 93210

Other Names

Post-GPI attachment to proteins factor 3, COS16 homolog, hCOS16, Gene coamplified with ERBB2 protein, PER1-like domain-containing protein 1, PGAP3, CAB2, PERLD1

Target/Specificity

This PGAP3 antibody is generated from rabbits immunized with a KLH conjugated synthetic peptide between 141-169 amino acids from the Central region of human PGAP3.

Dilution

WB~~1:1000
IHC-P~~1:10~50

Format

Purified polyclonal antibody supplied in PBS with 0.09% (W/V) sodium azide. This antibody is purified through a protein A column, followed by peptide affinity purification.

Storage

Maintain refrigerated at 2-8°C for up to 2 weeks. For long term storage store at -20°C in small aliquots to prevent freeze-thaw cycles.

Precautions

PGAP3 Antibody (Center) is for research use only and not for use in diagnostic or therapeutic procedures.

PGAP3 Antibody (Center) - Protein Information

Name PGAP3 ([HGNC:23719](#))

Synonyms CAB2, PERLD1

Function Involved in the lipid remodeling steps of GPI-anchor maturation. Lipid remodeling steps consist in the generation of 2 saturated fatty chains at the sn-2 position of GPI-anchors proteins. Required for phospholipase A2 activity that removes an acyl-chain at the sn-2 position of GPI-anchors during the remodeling of GPI.

Cellular Location

Golgi apparatus membrane; Multi-pass membrane protein. Endoplasmic reticulum membrane; Multi-pass membrane protein. Note=Mainly localizes to Golgi apparatus.

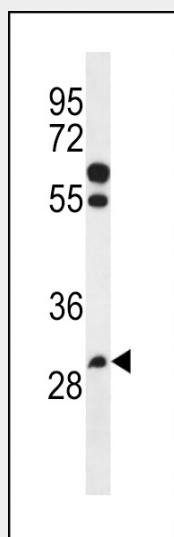
Tissue Location

Ubiquitously expressed, with highest levels in thyroid and placenta.

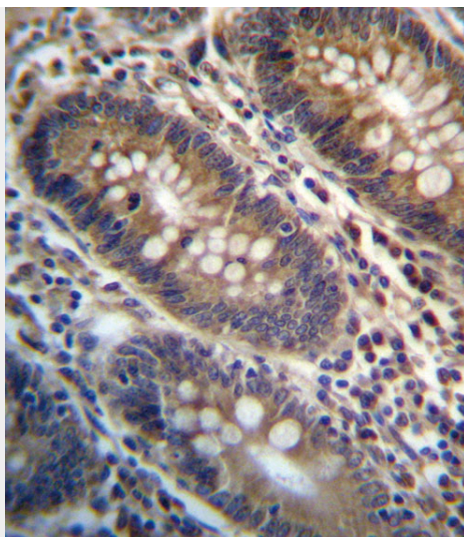
PGAP3 Antibody (Center) - Protocols

Provided below are standard protocols that you may find useful for product applications.

- [Western Blot](#)
- [Blocking Peptides](#)
- [Dot Blot](#)
- [Immunohistochemistry](#)
- [Immunofluorescence](#)
- [Immunoprecipitation](#)
- [Flow Cytometry](#)
- [Cell Culture](#)

PGAP3 Antibody (Center) - Images

PGAP3 Antibody (Center) (Cat. #AP13237c) western blot analysis in NCI-H460 cell line lysates (35ug/lane). This demonstrates the PGAP3 antibody detected the PGAP3 protein (arrow).



PGAP3 Antibody (Center) (Cat. #AP13237c) immunohistochemistry analysis in formalin fixed and paraffin embedded human colon tissue followed by peroxidase conjugation of the secondary antibody and DAB staining. This data demonstrates the use of PGAP3 Antibody (Center) for immunohistochemistry. Clinical relevance has not been evaluated.

PGAP3 Antibody (Center) - Background

PGAP3 is involved in the lipid remodeling steps of GPI-anchor maturation. Lipid remodeling steps consist in the generation of 2 saturated fatty chains at the sn-2 position of GPI-anchors proteins. Required for phospholipase A2 activity that removes an acyl-chain at the sn-2 position of GPI-anchors during the remodeling of GPI (Probable).

PGAP3 Antibody (Center) - References

Bailey, S.D., et al. Diabetes Care (2010) In press :
Talmud, P.J., et al. Am. J. Hum. Genet. 85(5):628-642(2009)
Mavaddat, N., et al. Cancer Epidemiol. Biomarkers Prev. 18(1):255-259(2009)
Maeda, Y., et al. Mol. Biol. Cell 18(4):1497-1506(2007)
Benusiglio, P.R., et al. Br. J. Cancer 95(12):1689-1695(2006)