

SC65 Antibody (C-term)
Affinity Purified Rabbit Polyclonal Antibody (Pab)
Catalog # AP13238b**Specification**

SC65 Antibody (C-term) - Product Information

Application	WB,E
Primary Accession	O92791
Other Accession	NP_006446.1
Reactivity	Human
Host	Rabbit
Clonality	Polyclonal
Isotype	Rabbit IgG
Calculated MW	50381
Antigen Region	361-390

SC65 Antibody (C-term) - Additional Information**Gene ID** 10609**Other Names**

Synaptonemal complex protein SC65, Leprecan-like protein 4, Nucleolar autoantigen No55, LEPREL4, NOL55, SC65

Target/Specificity

This SC65 antibody is generated from rabbits immunized with a KLH conjugated synthetic peptide between 361-390 amino acids from the C-terminal region of human SC65.

Dilution

WB~~1:1000

Format

Purified polyclonal antibody supplied in PBS with 0.09% (W/V) sodium azide. This antibody is purified through a protein A column, followed by peptide affinity purification.

Storage

Maintain refrigerated at 2-8°C for up to 2 weeks. For long term storage store at -20°C in small aliquots to prevent freeze-thaw cycles.

Precautions

SC65 Antibody (C-term) is for research use only and not for use in diagnostic or therapeutic procedures.

SC65 Antibody (C-term) - Protein Information**Name** P3H4 ([HGNC:16946](#))**Function** Part of a complex composed of PLOD1, P3H3 and P3H4 that catalyzes hydroxylation of

lysine residues in collagen alpha chains and is required for normal assembly and cross-linking of collagen fibrils. Required for normal bone density and normal skin stability via its role in hydroxylation of lysine residues in collagen alpha chains and in collagen fibril assembly.

Cellular Location

Endoplasmic reticulum

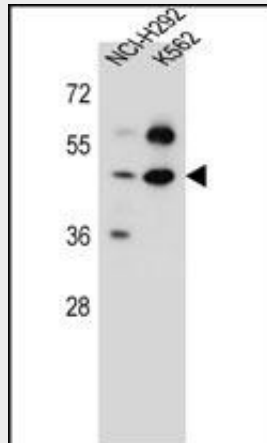
Tissue Location

Detected in fibroblasts (at protein level) (PubMed:23959653). Detected in spleen, prostate, testis, ovary, colon, pancreas, kidney, placenta and heart (PubMed:10952778)

SC65 Antibody (C-term) - Protocols

Provided below are standard protocols that you may find useful for product applications.

- [Western Blot](#)
- [Blocking Peptides](#)
- [Dot Blot](#)
- [Immunohistochemistry](#)
- [Immunofluorescence](#)
- [Immunoprecipitation](#)
- [Flow Cytometry](#)
- [Cell Culture](#)

SC65 Antibody (C-term) - Images

SC65 Antibody (C-term) (Cat. #AP13238b) western blot analysis in NCI-H292,K562 cell line lysates (35ug/lane).This demonstrates the SC65 antibody detected the SC65 protein (arrow).

SC65 Antibody (C-term) - Background

This nucleolar protein was first characterized because it was an autoantigen in cases on interstitial cystitis. The protein, with a predicted molecular weight of 50 kDa, appears to be localized in the particulate compartment of the interphase nucleolus, with a distribution distinct from that of nucleolar protein B23. During mitosis it is associated with chromosomes.

SC65 Antibody (C-term) - References

Foster, L.J., et al. J. Proteome Res. 5(1):64-75(2006)
Fossa, A., et al. Br. J. Cancer 83(6):743-749(2000)
Ochs, R.L., et al. Mol. Biol. Cell 7(7):1015-1024(1996)