

RTDR1 Antibody (N-term)
Affinity Purified Rabbit Polyclonal Antibody (Pab)
Catalog # AP13240a**Specification**

RTDR1 Antibody (N-term) - Product Information

Application	WB, IHC-P,E
Primary Accession	Q9UHP6
Other Accession	NP_055248.1
Reactivity	Human
Host	Rabbit
Clonality	Polyclonal
Isotype	Rabbit IgG
Calculated MW	38592
Antigen Region	17-45

RTDR1 Antibody (N-term) - Additional Information**Gene ID** 27156**Other Names**

Rhabdoid tumor deletion region protein 1, RTDR1

Target/Specificity

This RTDR1 antibody is generated from rabbits immunized with a KLH conjugated synthetic peptide between 17-45 amino acids from the N-terminal region of human RTDR1.

Dilution

WB~~1:1000

IHC-P~~1:10~50

Format

Purified polyclonal antibody supplied in PBS with 0.09% (W/V) sodium azide. This antibody is purified through a protein A column, followed by peptide affinity purification.

Storage

Maintain refrigerated at 2-8°C for up to 2 weeks. For long term storage store at -20°C in small aliquots to prevent freeze-thaw cycles.

Precautions

RTDR1 Antibody (N-term) is for research use only and not for use in diagnostic or therapeutic procedures.

RTDR1 Antibody (N-term) - Protein Information**Name** RSPH14 ([HGNC:13437](#))**Synonyms** RTDR1

Function Functions as part of axonemal radial spoke complexes that play an important part in the motility of sperm and cilia.

Cellular Location

Cytoplasm, cytoskeleton, flagellum axoneme {ECO:0000250|UniProtKB:Q9D3W1}

Tissue Location

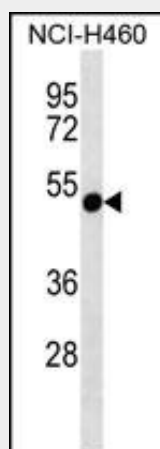
Expressed in adult cerebellum, spinal cord, spleen, skeletal muscle and some/5 out of 9 rhabdoid tumors. Detected in fetal brain, lung, liver and kidney.

RTDR1 Antibody (N-term) - Protocols

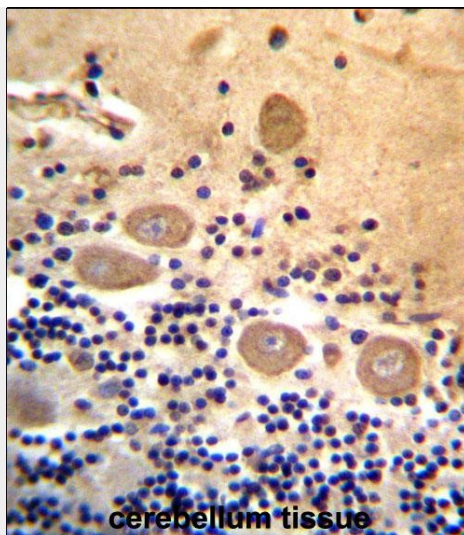
Provided below are standard protocols that you may find useful for product applications.

- [Western Blot](#)
- [Blocking Peptides](#)
- [Dot Blot](#)
- [Immunohistochemistry](#)
- [Immunofluorescence](#)
- [Immunoprecipitation](#)
- [Flow Cytometry](#)
- [Cell Culture](#)

RTDR1 Antibody (N-term) - Images



RTDR1 Antibody (N-term) (Cat. #AP13240a) western blot analysis in NCI-H460 cell line lysates (35ug/lane). This demonstrates the RTDR1 antibody detected the RTDR1 protein (arrow).



RTDR1 Antibody (N-term) (Cat. #AP13240a) immunohistochemistry analysis in formalin fixed and paraffin embedded human cerebellum tissue followed by peroxidase conjugation of the secondary antibody and DAB staining. This data demonstrates the use of RTDR1 Antibody (N-term) for immunohistochemistry. Clinical relevance has not been evaluated.

RTDR1 Antibody (N-term) - Background

This gene encodes a protein with no known function but with slight similarity to a yeast vacuolar protein. The gene is located in a region deleted in pediatric rhabdoid tumors of the brain, kidney and soft tissues, but mutations in this gene have not been associated with the disease.

RTDR1 Antibody (N-term) - References

Gudbjartsson, D.F., et al. Nat. Genet. 40(5):609-615(2008)
Barrios-Rodiles, M., et al. Science 307(5715):1621-1625(2005)
Collins, J.E., et al. Genome Biol. 5 (10), R84 (2004) :
Zhou, J., et al. Gene 241(1):133-141(2000)