

CDH22 Antibody (Center)
Affinity Purified Rabbit Polyclonal Antibody (Pab)
Catalog # AP13244c**Specification**

CDH22 Antibody (Center) - Product Information

| | |
|-------------------|-----------------------------|
| Application | WB, IHC-P,E |
| Primary Accession | O9UJ99 |
| Other Accession | NP_067071.1 |
| Reactivity | Human |
| Host | Rabbit |
| Clonality | Polyclonal |
| Isotype | Rabbit IgG |
| Calculated MW | 89091 |
| Antigen Region | 411-440 |

CDH22 Antibody (Center) - Additional Information**Gene ID** 64405**Other Names**

Cadherin-22, Pituitary and brain cadherin, PB-cadherin, CDH22, C20orf25

Target/Specificity

This CDH22 antibody is generated from rabbits immunized with a KLH conjugated synthetic peptide between 411-440 amino acids from the Central region of human CDH22.

Dilution

WB~~1:1000

IHC-P~~1:10~50

Format

Purified polyclonal antibody supplied in PBS with 0.09% (W/V) sodium azide. This antibody is purified through a protein A column, followed by peptide affinity purification.

Storage

Maintain refrigerated at 2-8°C for up to 2 weeks. For long term storage store at -20°C in small aliquots to prevent freeze-thaw cycles.

Precautions

CDH22 Antibody (Center) is for research use only and not for use in diagnostic or therapeutic procedures.

CDH22 Antibody (Center) - Protein Information**Name** CDH22**Synonyms** C20orf25

Function Cadherins are calcium-dependent cell adhesion proteins. They preferentially interact with themselves in a homophilic manner in connecting cells; cadherins may thus contribute to the sorting of heterogeneous cell types. PB-cadherins may have a role in the morphological organization of pituitary gland and brain tissues (By similarity).

Cellular Location

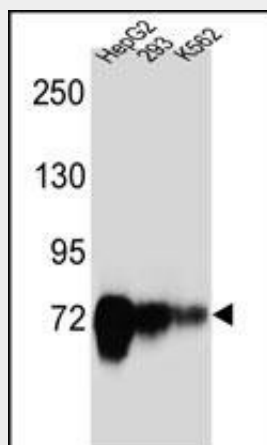
Cell membrane; Single-pass type I membrane protein

CDH22 Antibody (Center) - Protocols

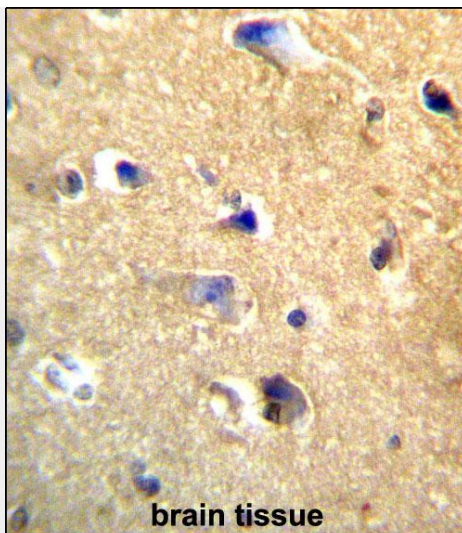
Provided below are standard protocols that you may find useful for product applications.

- [Western Blot](#)
- [Blocking Peptides](#)
- [Dot Blot](#)
- [Immunohistochemistry](#)
- [Immunofluorescence](#)
- [Immunoprecipitation](#)
- [Flow Cytometry](#)
- [Cell Culture](#)

CDH22 Antibody (Center) - Images



CDH22 Antibody (Center) (Cat. #AP13244c) western blot analysis in HepG2,293,K562 cell line lysates (35ug/lane).This demonstrates the CDH22 antibody detected the CDH22 protein (arrow).



CDH22 Antibody (Center) (Cat. #AP13244c) immunohistochemistry analysis in formalin fixed and paraffin embedded human brain tissue followed by peroxidase conjugation of the secondary antibody and DAB staining. This data demonstrates the use of CDH22 Antibody (Center) for immunohistochemistry. Clinical relevance has not been evaluated.

CDH22 Antibody (Center) - Background

This gene is a member of the cadherin superfamily. The gene product is composed of five cadherin repeat domains and a cytoplasmic tail similar to the highly conserved cytoplasmic region of classical cadherins. Expressed predominantly in the brain, this putative calcium-dependent cell adhesion protein may play an important role in morphogenesis and tissue formation in neural and non-neural cells during development and maintenance of the brain and neuroendocrine organs.

CDH22 Antibody (Center) - References

Lewis, J.P., et al. Genomics (2010) In press :
Liu, Y., et al. Cancer Biol. Ther. 8(14):1352-1359(2009)
Zhou, J., et al. Tumour Biol. 30(3):130-140(2009)
Bento, J.L., et al. Genomics 92(4):226-234(2008)
Wu, J., et al. J. Endocrinol. 176(3):381-391(2003)