

**SEC14L4 Antibody (N-term)**  
**Affinity Purified Rabbit Polyclonal Antibody (Pab)**  
**Catalog # AP13245a****Specification**

---

**SEC14L4 Antibody (N-term) - Product Information**

Application	WB, IHC-P,E
Primary Accession	<a href="#">O9UDX3</a>
Other Accession	<a href="#">NP_777637.1</a>
Reactivity	Human
Host	Rabbit
Clonality	Polyclonal
Isotype	Rabbit IgG
Calculated MW	46644
Antigen Region	41-70

**SEC14L4 Antibody (N-term) - Additional Information****Gene ID** 284904**Other Names**

SEC14-like protein 4, Tocopherol-associated protein 3, SEC14L4, TAP3

**Target/Specificity**

This SEC14L4 antibody is generated from rabbits immunized with a KLH conjugated synthetic peptide between 41-70 amino acids from the N-terminal region of human SEC14L4.

**Dilution**

WB~~1:1000

IHC-P~~1:10~50

**Format**

Purified polyclonal antibody supplied in PBS with 0.09% (W/V) sodium azide. This antibody is purified through a protein A column, followed by peptide affinity purification.

**Storage**

Maintain refrigerated at 2-8°C for up to 2 weeks. For long term storage store at -20°C in small aliquots to prevent freeze-thaw cycles.

**Precautions**

SEC14L4 Antibody (N-term) is for research use only and not for use in diagnostic or therapeutic procedures.

**SEC14L4 Antibody (N-term) - Protein Information****Name** SEC14L4**Synonyms** TAP3

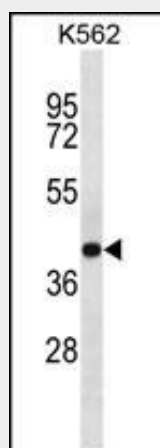
**Function** Probable hydrophobic ligand-binding protein; may play a role in the transport of hydrophobic ligands like tocopherol, squalene and phospholipids.

### SEC14L4 Antibody (N-term) - Protocols

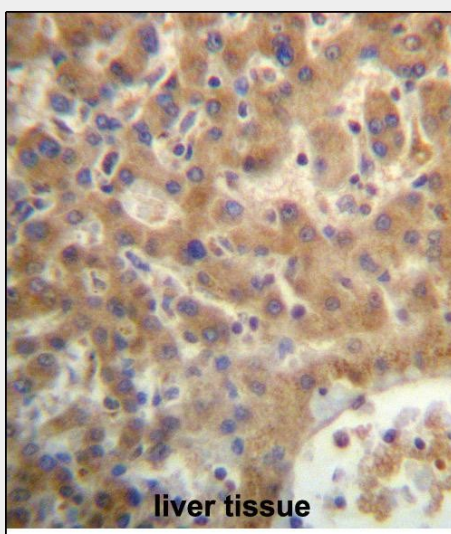
Provided below are standard protocols that you may find useful for product applications.

- [Western Blot](#)
- [Blocking Peptides](#)
- [Dot Blot](#)
- [Immunohistochemistry](#)
- [Immunofluorescence](#)
- [Immunoprecipitation](#)
- [Flow Cytometry](#)
- [Cell Culture](#)

### SEC14L4 Antibody (N-term) - Images



SEC14L4 Antibody (N-term) (Cat. #AP13245a) western blot analysis in K562 cell line lysates (35ug/lane). This demonstrates the SEC14L4 antibody detected the SEC14L4 protein (arrow).



SEC14L4 Antibody (N-term) (Cat. #AP13245a) immunohistochemistry analysis in formalin fixed and paraffin embedded human liver tissue followed by peroxidase conjugation of the secondary

antibody and DAB staining. This data demonstrates the use of SEC14L4 Antibody (N-term) for immunohistochemistry. Clinical relevance has not been evaluated.

#### **SEC14L4 Antibody (N-term) - Background**

The protein encoded by this gene is highly similar to the protein encoded by the *Saccharomyces cerevisiae* SEC14 gene. The SEC14 protein is a phosphatidylinositol transfer protein that is essential for biogenesis of Golgi-derived transport vesicles, and thus is required for the export of yeast secretory proteins from the Golgi complex. The specific function of this protein has not yet been determined. Alternative splicing results in multiple transcript variants.

#### **SEC14L4 Antibody (N-term) - References**

Mokashi, V., et al. Biochem. Biophys. Res. Commun. 316(3):688-692(2004)  
Collins, J.E., et al. Genome Biol. 5 (10), R84 (2004) :  
Kempna, P., et al. Free Radic. Biol. Med. 34(11):1458-1472(2003)  
Dunham, I., et al. Nature 402(6761):489-495(1999)