

ARSF Antibody (Center)
Affinity Purified Rabbit Polyclonal Antibody (Pab)
Catalog # AP13247c**Specification**

ARSF Antibody (Center) - Product Information

Application	WB, FC,E
Primary Accession	P54793
Other Accession	NP_004033.2
Reactivity	Human
Host	Rabbit
Clonality	Polyclonal
Isotype	Rabbit IgG
Calculated MW	65940
Antigen Region	236-264

ARSF Antibody (Center) - Additional Information**Gene ID** 416**Other Names**

Arylsulfatase F, ASF, 316-, ARSF

Target/Specificity

This ARSF antibody is generated from rabbits immunized with a KLH conjugated synthetic peptide between 236-264 amino acids from the Central region of human ARSF.

Dilution

WB~~1:1000

FC~~1:10~50

Format

Purified polyclonal antibody supplied in PBS with 0.09% (W/V) sodium azide. This antibody is purified through a protein A column, followed by peptide affinity purification.

Storage

Maintain refrigerated at 2-8°C for up to 2 weeks. For long term storage store at -20°C in small aliquots to prevent freeze-thaw cycles.

Precautions

ARSF Antibody (Center) is for research use only and not for use in diagnostic or therapeutic procedures.

ARSF Antibody (Center) - Protein Information**Name** ARSF**Function** Exhibits arylsulfatase activity towards the artificial substrate 4-methylumbelliferyl

sulfate.

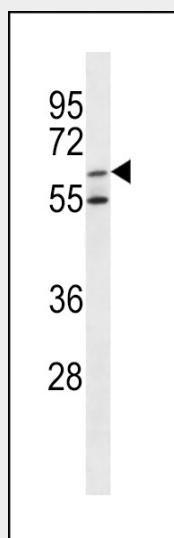
Cellular Location
Secreted.

ARSF Antibody (Center) - Protocols

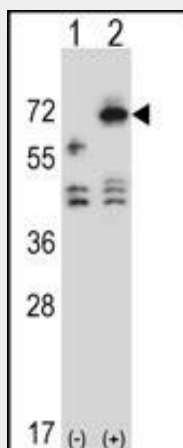
Provided below are standard protocols that you may find useful for product applications.

- [Western Blot](#)
- [Blocking Peptides](#)
- [Dot Blot](#)
- [Immunohistochemistry](#)
- [Immunofluorescence](#)
- [Immunoprecipitation](#)
- [Flow Cytometry](#)
- [Cell Culture](#)

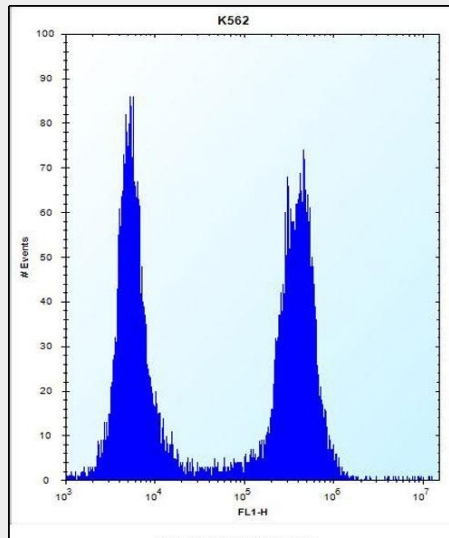
ARSF Antibody (Center) - Images



ARSF Antibody (Center) (Cat. #AP13247c) western blot analysis in K562 cell line lysates (35ug/lane). This demonstrates the ARSF antibody detected the ARSF protein (arrow).



Western blot analysis of ARSF (arrow) using rabbit polyclonal ARSF Antibody (Center) (Cat. #AP13247c). 293 cell lysates (2 ug/lane) either nontransfected (Lane 1) or transiently transfected (Lane 2) with the ARSF gene.



ARSF Antibody (Center) (Cat. #AP13247c) flow cytometric analysis of K562 cells (right histogram) compared to a negative control cell (left histogram). FITC-conjugated donkey-anti-rabbit secondary antibodies were used for the analysis.

ARSF Antibody (Center) - Background

This gene is a member of the sulfatase family, and more specifically, the arylsulfatase subfamily. Members of the subfamily share similarity in sequence and splice sites, and are clustered together on chromosome X, suggesting that they are derived from recent gene duplication events. Sulfatases are essential for the correct composition of bone and cartilage matrix. The activity of this protein, unlike that of arylsulfatase E, is not inhibited by warfarin.

ARSF Antibody (Center) - References

- Cao, W., et al. J. Biol. Chem. 273(32):20629-20635(1998)
- Puca, A.A., et al. Genomics 42(2):192-199(1997)
- Parenti, G., et al. Curr. Opin. Genet. Dev. 7(3):386-391(1997)
- Franco, B., et al. Cell 81(1):15-25(1995)