

**TASP1 Antibody (C-term)**  
**Purified Rabbit Polyclonal Antibody (Pab)**  
**Catalog # AP1330b****Specification**

---

**TASP1 Antibody (C-term) - Product Information**

Application	WB, IHC-P,E
Primary Accession	<a href="#">Q9H6P5</a>
Other Accession	<a href="#">Q8R1G1</a>
Reactivity	Human, Mouse
Host	Rabbit
Clonality	Polyclonal
Isotype	Rabbit IgG
Calculated MW	44455
Antigen Region	364-395

**TASP1 Antibody (C-term) - Additional Information****Gene ID** 55617**Other Names**

Threonine aspartase 1, Taspase-1, 3425-, Threonine aspartase subunit alpha, Threonine aspartase subunit beta, TASP1, C20orf13

**Target/Specificity**

This TASP1 antibody is generated from rabbits immunized with a KLH conjugated synthetic peptide between 364-395 amino acids from the C-terminal region of human TASP1.

**Dilution**

WB~~1:1000

IHC-P~~1:10~50

**Format**

Purified polyclonal antibody supplied in PBS with 0.09% (W/V) sodium azide. This antibody is prepared by Saturated Ammonium Sulfate (SAS) precipitation followed by dialysis against PBS.

**Storage**

Maintain refrigerated at 2-8°C for up to 2 weeks. For long term storage store at -20°C in small aliquots to prevent freeze-thaw cycles.

**Precautions**

TASP1 Antibody (C-term) is for research use only and not for use in diagnostic or therapeutic procedures.

**TASP1 Antibody (C-term) - Protein Information****Name** TASP1

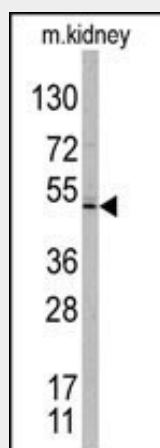
**Synonyms** C20orf13

**Function** Protease responsible for KMT2A/MLL1 processing and activation (PubMed:[14636557](#)). It also activates KMT2D/MLL2 (By similarity). Through substrate activation, it controls the expression of HOXA genes, and the expression of key cell cycle regulators including CCNA1, CCNB1, CCNE1 and CDKN2A (By similarity) (PubMed:[14636557](#)).

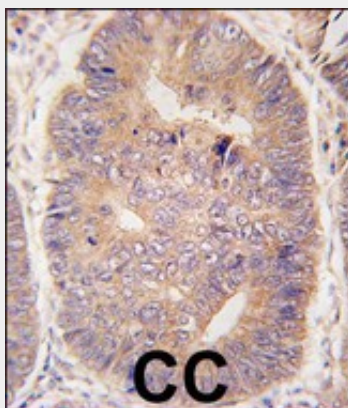
**TASP1 Antibody (C-term) - Protocols**

Provided below are standard protocols that you may find useful for product applications.

- [Western Blot](#)
- [Blocking Peptides](#)
- [Dot Blot](#)
- [Immunohistochemistry](#)
- [Immunofluorescence](#)
- [Immunoprecipitation](#)
- [Flow Cytometry](#)
- [Cell Culture](#)

**TASP1 Antibody (C-term) - Images**

Western blot analysis of TASP1 C-term polyclonal antibody (Cat.# AP1330b) in mouse kidney tissue lysates. TASP1 (arrow) was detected using the purified Pab .



Formalin-fixed and paraffin-embedded human colon carcinoma tissue reacted with hTASP1-C-term (Cat.#AP1330b), which was peroxidase-conjugated to the secondary antibody,

followed by DAB staining. This data demonstrates the use of this antibody for immunohistochemistry; clinical relevance has not been evaluated.

#### **TASP1 Antibody (C-term) - Background**

TASP1 is an endopeptidase that cleaves specific substrates following aspartate residues. The encoded protein undergoes posttranslational autoproteolytic processing to generate alpha and beta subunits, which reassemble into the active alpha2-beta2 heterotetramer. It is required to cleave MLL, a protein required for the maintenance of HOX gene expression, and TFIIA, a basal transcription factor.

#### **TASP1 Antibody (C-term) - References**

Hsieh, J.J., et al., Cell 115(3):293-303 (2003).