

**PI15 Antibody (N-term)**  
**Affinity Purified Rabbit Polyclonal Antibody (Pab)**  
**Catalog # AP13330a****Specification**

---

**PI15 Antibody (N-term) - Product Information**

Application	WB, IHC-P, FC,E
Primary Accession	<a href="#">O43692</a>
Other Accession	<a href="#">NP_056970.1</a>
Reactivity	Human
Host	Rabbit
Clonality	Polyclonal
Isotype	Rabbit IgG
Calculated MW	29065
Antigen Region	34-63

**PI15 Antibody (N-term) - Additional Information****Gene ID** 51050**Other Names**

Peptidase inhibitor 15, PI-15, 25 kDa trypsin inhibitor, p25TI, Cysteine-rich secretory protein 8, CRISP-8, SugarCrisp, PI15, CRISP8, P25TI

**Target/Specificity**

This PI15 antibody is generated from rabbits immunized with a KLH conjugated synthetic peptide between 34-63 amino acids from the N-terminal region of human PI15.

**Dilution**

WB~~1:1000  
IHC-P~~1:10~50  
FC~~1:10~50

**Format**

Purified polyclonal antibody supplied in PBS with 0.09% (W/V) sodium azide. This antibody is purified through a protein A column, followed by peptide affinity purification.

**Storage**

Maintain refrigerated at 2-8°C for up to 2 weeks. For long term storage store at -20°C in small aliquots to prevent freeze-thaw cycles.

**Precautions**

PI15 Antibody (N-term) is for research use only and not for use in diagnostic or therapeutic procedures.

**PI15 Antibody (N-term) - Protein Information****Name** PI15

**Synonyms** CRISP8, P25TI

**Function** Serine protease inhibitor which displays weak inhibitory activity against trypsin (PubMed:[8882727](#)). May play a role in facial patterning during embryonic development (By similarity).

**Cellular Location**

Secreted.

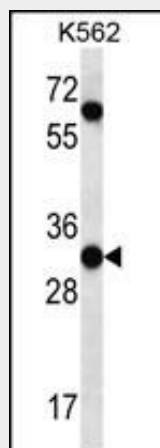
**Tissue Location**

Weakly expressed. Expressed at low level in prostate, mammary gland, salivary gland and thyroid gland

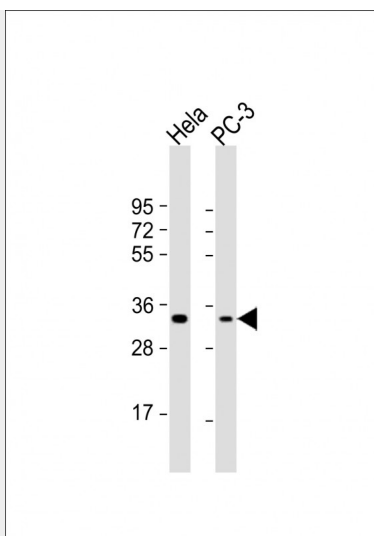
**PI15 Antibody (N-term) - Protocols**

Provided below are standard protocols that you may find useful for product applications.

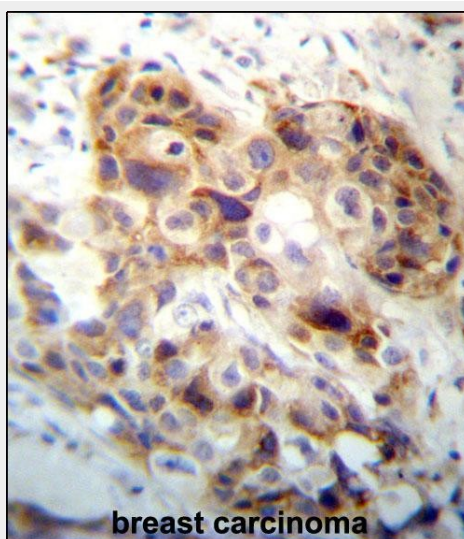
- [Western Blot](#)
- [Blocking Peptides](#)
- [Dot Blot](#)
- [Immunohistochemistry](#)
- [Immunofluorescence](#)
- [Immunoprecipitation](#)
- [Flow Cytometry](#)
- [Cell Culture](#)

**PI15 Antibody (N-term) - Images**

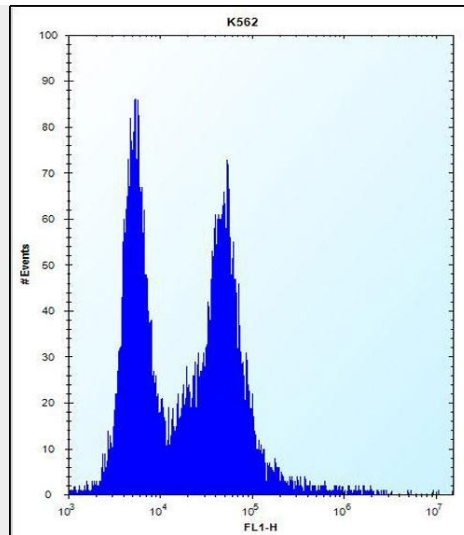
PI15 Antibody (N-term) (Cat. #AP13330a) western blot analysis in K562 cell line lysates (35ug/lane). This demonstrates the PI15 antibody detected the PI15 protein (arrow).



All lanes : Anti-PI15 Antibody (N-term) at 1:1000 dilution Lane 1: HeLa whole cell lysate Lane 2: PC-3 whole cell lysate Lysates/proteins at 20 µg per lane. Secondary Goat Anti-Rabbit IgG, (H+L), Peroxidase conjugated at 1/10000 dilution. Predicted band size : 29 kDa Blocking/Dilution buffer: 5% NFDM/TBST.



PI15 Antibody (N-term) (Cat. #AP13330a) immunohistochemistry analysis in formalin fixed and paraffin embedded human breast carcinoma followed by peroxidase conjugation of the secondary antibody and DAB staining. This data demonstrates the use of PI15 Antibody (N-term) for immunohistochemistry. Clinical relevance has not been evaluated.



PI15 Antibody (N-term) (Cat. #AP13330a) flow cytometric analysis of K562 cells (right histogram) compared to a negative control cell (left histogram). FITC-conjugated donkey-anti-rabbit secondary antibodies were used for the analysis.

### **PI15 Antibody (N-term) - Background**

This gene encodes a trypsin inhibitor. The protein shares similarity to insect venom allergens, mammalian testis-specific proteins and plant pathogenesis-related proteins. It is frequently expressed in human neuroblastoma and glioblastoma cell lines, and thus may play a role in the central nervous system. [provided by RefSeq].

### **PI15 Antibody (N-term) - References**

Melzer, D., et al. PLoS Genet. 4 (5), E1000072 (2008) :  
Kaplan, F., et al. Am. J. Physiol. 276 (6 PT 1), L1027-L1036 (1999) :  
Yamakawa, T., et al. Biochim. Biophys. Acta 1395(2):202-208(1998)  
Yamakawa, T., et al. Biochim. Biophys. Acta 1395(2):202-208(1998)  
Koshikawa, N., et al. J. Biochem. 119(2):334-339(1996)