

ELAVL3 Antibody (N-term)
Affinity Purified Rabbit Polyclonal Antibody (Pab)
Catalog # AP13333a

Specification

ELAVL3 Antibody (N-term) - Product Information

Application	WB, IHC-P,E
Primary Accession	Q14576
Other Accession	Q60900 , NP_115657.2 , NP_001411.2
Reactivity	Human
Predicted	Mouse
Host	Rabbit
Clonality	Polyclonal
Isotype	Rabbit IgG
Calculated MW	39547
Antigen Region	71-99

ELAVL3 Antibody (N-term) - Additional Information

Gene ID 1995

Other Names

ELAV-like protein 3, Hu-antigen C, HuC, Paraneoplastic cerebellar degeneration-associated antigen, Paraneoplastic limbic encephalitis antigen 21, ELAVL3, HUC, PLE21

Target/Specificity

This ELAVL3 antibody is generated from rabbits immunized with a KLH conjugated synthetic peptide between 71-99 amino acids from the N-terminal region of human ELAVL3.

Dilution

WB~~1:1000
IHC-P~~1:10~50

Format

Purified polyclonal antibody supplied in PBS with 0.09% (W/V) sodium azide. This antibody is purified through a protein A column, followed by peptide affinity purification.

Storage

Maintain refrigerated at 2-8°C for up to 2 weeks. For long term storage store at -20°C in small aliquots to prevent freeze-thaw cycles.

Precautions

ELAVL3 Antibody (N-term) is for research use only and not for use in diagnostic or therapeutic procedures.

ELAVL3 Antibody (N-term) - Protein Information

Name ELAVL3

Synonyms HUC, PLE21

Function RNA-binding protein that binds to AU-rich element (ARE) sequences of target mRNAs, including VEGF mRNA (PubMed:[10710437](#)). May also bind poly-A tracts via RRM 3 (By similarity). May be involved in neuronal differentiation and maintenance (By similarity). Plays a role in the stabilization of GAP43 mRNA and in spatial learning (By similarity).

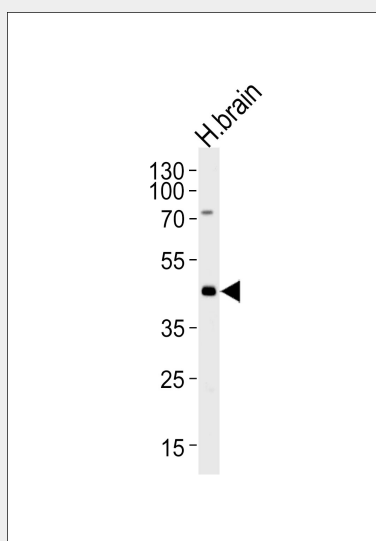
Tissue Location

Brain specific.

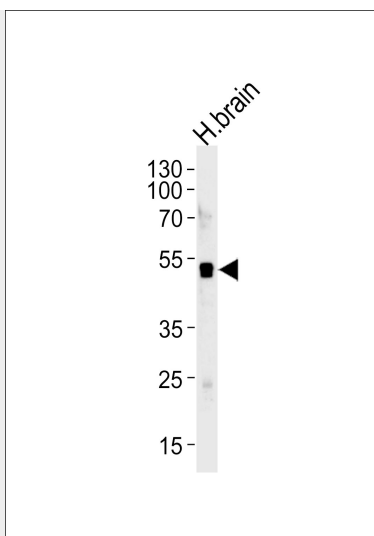
ELAVL3 Antibody (N-term) - Protocols

Provided below are standard protocols that you may find useful for product applications.

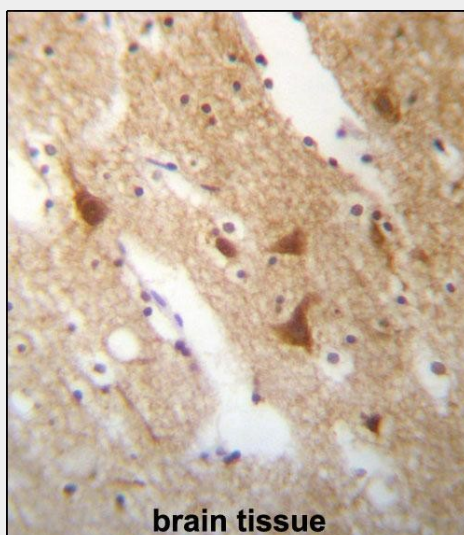
- [Western Blot](#)
- [Blocking Peptides](#)
- [Dot Blot](#)
- [Immunohistochemistry](#)
- [Immunofluorescence](#)
- [Immunoprecipitation](#)
- [Flow Cytometry](#)
- [Cell Culture](#)

ELAVL3 Antibody (N-term) - Images

Western blot analysis of lysate from human brain tissue lysate, using ELAVL3 Antibody (N-term)(Cat. #AP13333a). AP13333a was diluted at 1:1000 at each lane. A goat anti-rabbit IgG H&L(HRP) at 1:5000 dilution was used as the secondary antibody. Lysate at 35ug per lane.



Western blot analysis of lysate from human brain tissue lysate, using ELAVL3 Antibody (N-term)(Cat. #AP13333a). AP13333a was diluted at 1:1000 at each lane. A goat anti-rabbit IgG H&L(HRP) at 1:5000 dilution was used as the secondary antibody. Lysate at 35ug per lane.



ELAVL3 Antibody (N-term) (Cat. #AP13333a)immunohistochemistry analysis in formalin fixed and paraffin embedded human brain tissue followed by peroxidase conjugation of the secondary antibody and DAB staining.This data demonstrates the use of ELAVL3 Antibody (N-term) for immunohistochemistry. Clinical relevance has not been evaluated.

ELAVL3 Antibody (N-term) - Background

A member of the ELAVL protein family, ELAV-like 3 is a neural-specific RNA-binding protein which contains three RNP-type RNA recognition motifs. The observation that ELAVL3 is one of several Hu antigens (neuronal-specific RNA-binding proteins) recognized by the anti-Hu serum antibody present in sera from patients with paraneoplastic encephalomyelitis and sensory neuronopathy (PEM/PSN) suggests it has a role in neurogenesis. Two alternatively spliced transcript variants encoding distinct isoforms have been found for this gene.

ELAVL3 Antibody (N-term) - References

Behrends, U., et al. Int. J. Cancer 100(6):669-677(2002)
Park, S., et al. Mol. Cell. Biol. 20(13):4765-4772(2000)
King, P.H. Nucleic Acids Res. 28 (7), E20 (2000) :
Sakai, K., et al. Biochem. Biophys. Res. Commun. 256(2):263-268(1999)
Van Tine, B.A., et al. Genomics 53(3):296-299(1998)