

MEGF9 Antibody (C-term)
Affinity Purified Rabbit Polyclonal Antibody (Pab)
Catalog # AP13358b

Specification

MEGF9 Antibody (C-term) - Product Information

| | |
|-------------------|---|
| Application | WB, IHC-P,E |
| Primary Accession | O9H1U4 |
| Other Accession | O8BH27 , NP_001073966.2 |
| Reactivity | Human |
| Predicted | Mouse |
| Host | Rabbit |
| Clonality | Polyclonal |
| Isotype | Rabbit IgG |
| Antigen Region | 521-549 |

MEGF9 Antibody (C-term) - Additional Information

Gene ID 1955

Other Names

Multiple epidermal growth factor-like domains protein 9, Multiple EGF-like domains protein 9, Epidermal growth factor-like protein 5, EGF-like protein 5, MEGF9, EGFL5, KIAA0818

Target/Specificity

This MEGF9 antibody is generated from rabbits immunized with a KLH conjugated synthetic peptide between 521-549 amino acids from the C-terminal region of human MEGF9.

Dilution

WB~~1:1000
IHC-P~~1:10~50

Format

Purified polyclonal antibody supplied in PBS with 0.09% (W/V) sodium azide. This antibody is purified through a protein A column, followed by peptide affinity purification.

Storage

Maintain refrigerated at 2-8°C for up to 2 weeks. For long term storage store at -20°C in small aliquots to prevent freeze-thaw cycles.

Precautions

MEGF9 Antibody (C-term) is for research use only and not for use in diagnostic or therapeutic procedures.

MEGF9 Antibody (C-term) - Protein Information

Name MEGF9

Synonyms EGFL5, KIAA0818

Cellular Location

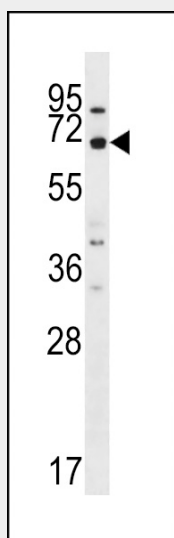
Membrane; Single-pass type I membrane protein

MEGF9 Antibody (C-term) - Protocols

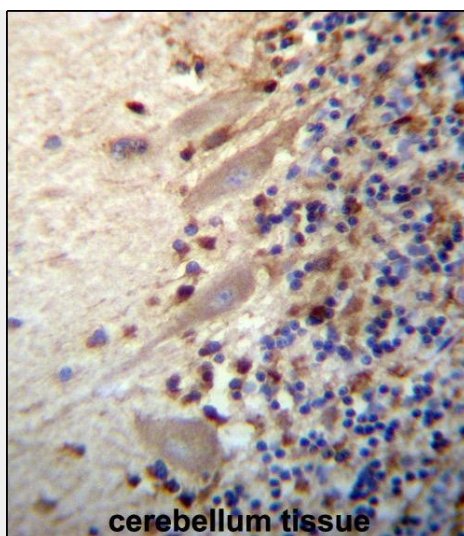
Provided below are standard protocols that you may find useful for product applications.

- [Western Blot](#)
- [Blocking Peptides](#)
- [Dot Blot](#)
- [Immunohistochemistry](#)
- [Immunofluorescence](#)
- [Immunoprecipitation](#)
- [Flow Cytometry](#)
- [Cell Culture](#)

MEGF9 Antibody (C-term) - Images



MEGF9 Antibody (C-term) (Cat. #AP13358b) western blot analysis in A549 cell line lysates (35ug/lane). This demonstrates the MEGF9 antibody detected the MEGF9 protein (arrow).



MEGF9 Antibody (C-term) (Cat. #AP13358b) immunohistochemistry analysis in formalin fixed and paraffin embedded human cerebellum tissue followed by peroxidase conjugation of the secondary antibody and DAB staining. This data demonstrates the use of MEGF9 Antibody (C-term) for immunohistochemistry. Clinical relevance has not been evaluated.

MEGF9 Antibody (C-term) - Background

MEGF9 (multiple EGF-like-domains 9) is a novel transmembrane protein with multiple EGF-like repeats, which is predominantly expressed in the developing and adult CNS (central nervous system) and PNS (peripheral nervous system). The domain structure of MEGF9 consists of an N-terminal region with several potential O-glycosylation sites followed by five EGF-like domains, which are highly homologous with the short arms of laminins. Following one single pass transmembrane domain, a highly conserved short intracellular domain with potential phosphorylation sites is present.

MEGF9 Antibody (C-term) - References

Barber, M.J., et al. PLoS ONE 5 (3), E9763 (2010) :
Clark, H.F., et al. Genome Res. 13(10):2265-2270(2003)
Nakayama, M., et al. Genomics 51(1):27-34(1998)