

**ARL8A Antibody (Center)**  
**Affinity Purified Rabbit Polyclonal Antibody (Pab)**  
**Catalog # AP13458C****Specification**

---

**ARL8A Antibody (Center) - Product Information**

Application	WB, IHC-P,E
Primary Accession	<a href="#">O96BM9</a>
Other Accession	<a href="#">O8VEH3</a> , <a href="#">O5ZKQ8</a> , <a href="#">NP_620150.1</a>
Reactivity	Human
Predicted	Chicken, Mouse
Host	Rabbit
Clonality	Polyclonal
Isotype	Rabbit IgG
Calculated MW	21416
Antigen Region	82-110

**ARL8A Antibody (Center) - Additional Information****Gene ID** 127829**Other Names**

ADP-ribosylation factor-like protein 8A, ADP-ribosylation factor-like protein 10B, Novel small G protein indispensable for equal chromosome segregation 2, ARL8A, ARL10B, GIE2

**Target/Specificity**

This ARL8A antibody is generated from rabbits immunized with a KLH conjugated synthetic peptide between 82-110 amino acids from the Central region of human ARL8A.

**Dilution**

WB~~1:1000  
IHC-P~~1:10~50

**Format**

Purified polyclonal antibody supplied in PBS with 0.09% (W/V) sodium azide. This antibody is purified through a protein A column, followed by peptide affinity purification.

**Storage**

Maintain refrigerated at 2-8°C for up to 2 weeks. For long term storage store at -20°C in small aliquots to prevent freeze-thaw cycles.

**Precautions**

ARL8A Antibody (Center) is for research use only and not for use in diagnostic or therapeutic procedures.

**ARL8A Antibody (Center) - Protein Information****Name** ARL8A

**Synonyms** ARL10B, GIE2

**Function** Plays a role in lysosome motility (By similarity). In neurons, mediates the anterograde axonal long-range transport of presynaptic lysosome-related vesicles required for presynaptic biogenesis and synaptic function (By similarity). May play a role in chromosome segregation (By similarity).

**Cellular Location**

Late endosome membrane {ECO:0000250|UniProtKB:Q9NVJ2}. Lysosome membrane {ECO:0000250|UniProtKB:Q9CQW2}. Cytoplasm, cytoskeleton, spindle {ECO:0000250|UniProtKB:Q9NVJ2}. Cell projection, axon {ECO:0000250|UniProtKB:Q9CQW2}. Synapse {ECO:0000250|UniProtKB:Q9CQW2} Note=Localizes with microtubules at the spindle mid-zone during mitosis. {ECO:0000250|UniProtKB:Q9NVJ2}

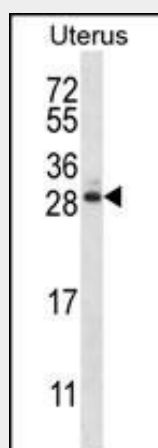
**Tissue Location**

Ubiquitously expressed.

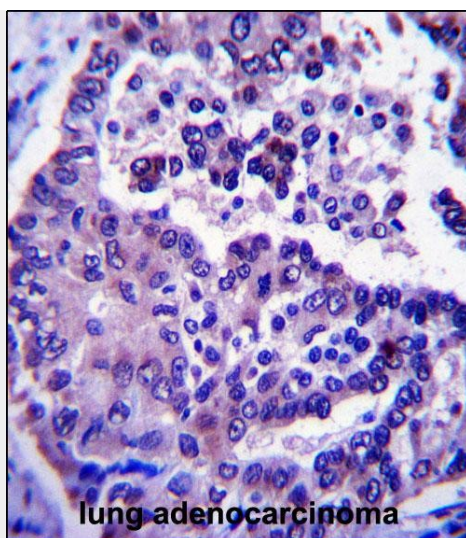
**ARL8A Antibody (Center) - Protocols**

Provided below are standard protocols that you may find useful for product applications.

- [Western Blot](#)
- [Blocking Peptides](#)
- [Dot Blot](#)
- [Immunohistochemistry](#)
- [Immunofluorescence](#)
- [Immunoprecipitation](#)
- [Flow Cytometry](#)
- [Cell Culture](#)

**ARL8A Antibody (Center) - Images**

ARL8A Antibody (Center) (Cat. #AP13458c) western blot analysis in human normal Uterus tissue lysates (35ug/lane). This demonstrates the ARL8A antibody detected the ARL8A protein (arrow).



ARL8A Antibody (Center) (Cat. #AP13458c) immunohistochemistry analysis in formalin fixed and paraffin embedded human lung adenocarcinoma followed by peroxidase conjugation of the secondary antibody and DAB staining. This data demonstrates the use of ARL8A Antibody (Center) for immunohistochemistry. Clinical relevance has not been evaluated.

#### **ARL8A Antibody (Center) - Background**

ARL8A may play a role in lysosomes motility. Alternatively, may play a role in chromosome segregation (By similarity).

#### **ARL8A Antibody (Center) - References**

Lamesch, P., et al. Genomics 89(3):307-315(2007) Hofmann, I., et al. J. Cell. Sci. 119 (PT 8), 1494-1503 (2006) : Okai, T., et al. J. Cell. Sci. 117 (PT 20), 4705-4715 (2004) : Secombe, J., et al. J. Biol. Chem. 279(17):17126-17133(2004)