

GOPC Antibody (C-term)
Affinity Purified Rabbit Polyclonal Antibody (Pab)
Catalog # AP13470B

Specification

GOPC Antibody (C-term) - Product Information

Application	WB, IHC-P,E
Primary Accession	Q9HD26
Other Accession	Q8BH60 , NP_001017408.1 , NP_065132.1
Reactivity	Human
Predicted	Mouse
Host	Rabbit
Clonality	Polyclonal
Isotype	Rabbit IgG
Calculated MW	50520
Antigen Region	357-386

GOPC Antibody (C-term) - Additional Information

Gene ID 57120

Other Names

Golgi-associated PDZ and coiled-coil motif-containing protein, CFTR-associated ligand, Fused in glioblastoma, PDZ protein interacting specifically with TC10, PIST, GOPC, CAL, FIG

Target/Specificity

This GOPC antibody is generated from rabbits immunized with a KLH conjugated synthetic peptide between 357-386 amino acids from the C-terminal region of human GOPC.

Dilution

WB~~1:1000
IHC-P~~1:10~50

Format

Purified polyclonal antibody supplied in PBS with 0.09% (W/V) sodium azide. This antibody is purified through a protein A column, followed by peptide affinity purification.

Storage

Maintain refrigerated at 2-8°C for up to 2 weeks. For long term storage store at -20°C in small aliquots to prevent freeze-thaw cycles.

Precautions

GOPC Antibody (C-term) is for research use only and not for use in diagnostic or therapeutic procedures.

GOPC Antibody (C-term) - Protein Information

Name GOPC ([HGNC:17643](#))

Function Plays a role in intracellular protein trafficking and degradation (PubMed:[11707463](#), PubMed:[14570915](#), PubMed:[15358775](#)). May regulate CFTR chloride currents and acid-induced ASIC3 currents by modulating cell surface expression of both channels (By similarity). May also regulate the intracellular trafficking of the ADR1B receptor (PubMed:[15358775](#)). May play a role in autophagy (By similarity). Together with MARCHF2 mediates the ubiquitination and lysosomal degradation of CFTR (PubMed:[23818989](#)). Overexpression results in CFTR intracellular retention and lysosomal degradation in the lysosomes (PubMed:[11707463](#), PubMed:[14570915](#)).

Cellular Location

Cytoplasm. Golgi apparatus membrane; Peripheral membrane protein. Golgi apparatus, trans-Golgi network membrane; Peripheral membrane protein Synapse. Postsynaptic density. Cell projection, dendrite. Note=Enriched in synaptosomal and postsynaptic densities (PSD) fractions. Expressed in cell bodies and dendrites of Purkinje cells. Localized at the trans-Golgi network (TGN) of spermatids and the medulla of round spermatides.

Tissue Location

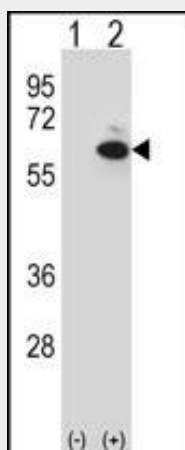
Ubiquitously expressed.

GOPC Antibody (C-term) - Protocols

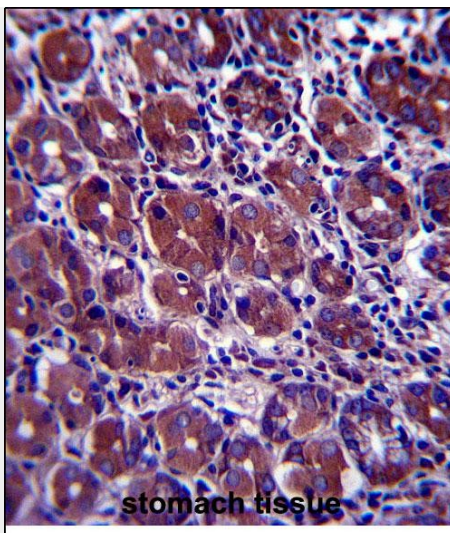
Provided below are standard protocols that you may find useful for product applications.

- [Western Blot](#)
- [Blocking Peptides](#)
- [Dot Blot](#)
- [Immunohistochemistry](#)
- [Immunofluorescence](#)
- [Immunoprecipitation](#)
- [Flow Cytometry](#)
- [Cell Culture](#)

GOPC Antibody (C-term) - Images



Western blot analysis of GOPC (arrow) using rabbit polyclonal GOPC Antibody (C-term) (Cat. #AP13470b). 293 cell lysates (2 ug/lane) either nontransfected (Lane 1) or transiently transfected (Lane 2) with the GOPC gene.



GOPC Antibody (C-term) (Cat. #AP13470b) immunohistochemistry analysis in formalin fixed and paraffin embedded human stomach tissue followed by peroxidase conjugation of the secondary antibody and DAB staining. This data demonstrates the use of GOPC Antibody (C-term) for immunohistochemistry. Clinical relevance has not been evaluated.

GOPC Antibody (C-term) - Background

PIST is a PDZ domain-containing Golgi protein. PDZ domains contain approximately 90 amino acids and bind the extreme C terminus of proteins in a sequence-specific manner. [supplied by OMIM].

GOPC Antibody (C-term) - References

Cheng, J., et al. Mol. Biol. Cell 21(7):1178-1187(2010)
Cushing, P.R., et al. Biochemistry 47(38):10084-10098(2008)
Lamesch, P., et al. Genomics 89(3):307-315(2007)
Li, X., et al. Protein Sci. 15(9):2149-2158(2006)
Ito, H., et al. Biochem. J. 397(3):389-398(2006)